

**WELDED CONNECTIONS**

- BH1000 - WELDED JOIST CONNECTION AT RAFTERS
- BH1010 - WELDED STRUT JOIST CONNECTIONS
- BH1100 - NEW JOIST TIE-IN CONNECTION TO EXISTING END FRAME
- BH1200 - INTERIOR ROOF JOIST AT STRUCTURAL EXPANSION

**BOLTED CONNECTIONS**

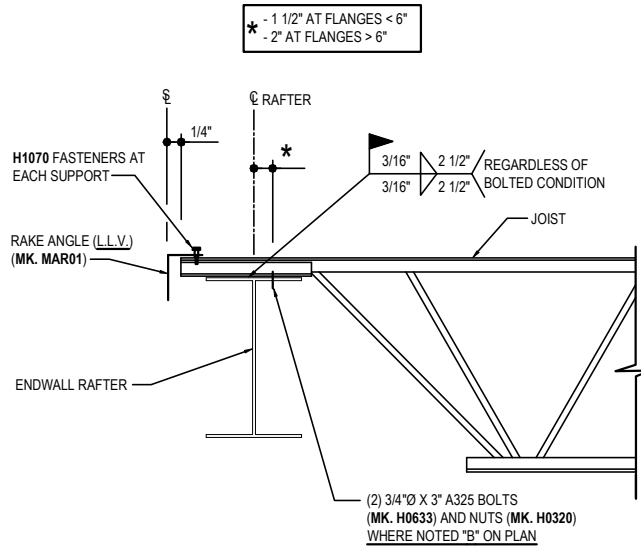
- BH2000 - BOLTED JOIST CONNECTION AT RAFTERS
- BH2010 - BOLTED STRUT JOIST CONNECTION AT RAFTERS (WITH 3/4Ø BOLTS)
- BH2020 - BOLTED STRUT JOIST CONNECTION AT RAFTERS (WITH WELD)
- BH2100 - NEW JOIST TIE-IN CONNECTION TO EXISTING END FRAME
- BH2200 - INTERIOR ROOF JOIST AT STRUCTURAL EXPANSION

**MASONRY CONNECTIONS**

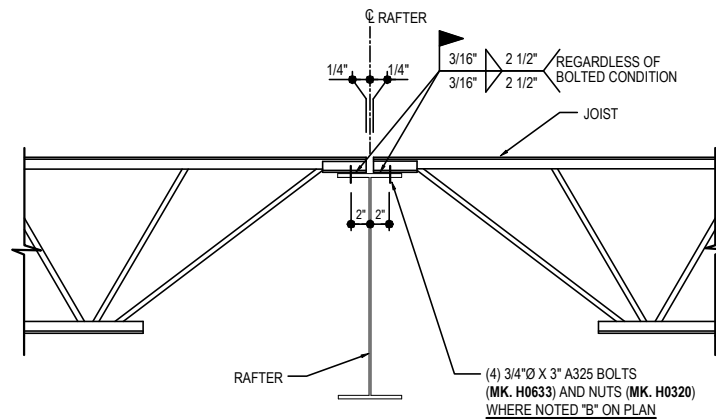
- BH3000 - JOIST CONNECTION AT MASONRY END SUPPORT
  - BH3010 - JOIST CONNECTION AT MASONRY INTERIOR SUPPORT
-

**BH1000 - WELDED JOIST CONNECTION AT RAFTERS**

[Download the DWG file by clicking here.](#)



**END FRAME CONDITION**



**INTERIOR CONDITION**

**JOIST CONNECTION DETAIL**

LONGSPAN WELDED ROOF JOIST SYSTEM  
REFERENCE ERECTOR NOTE FOR TYPICAL WASHER REQUIREMENTS

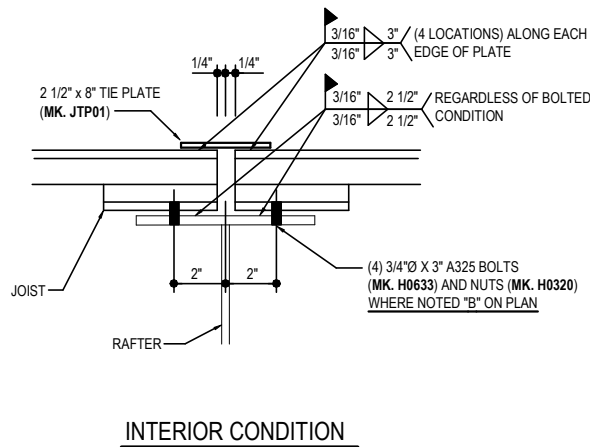
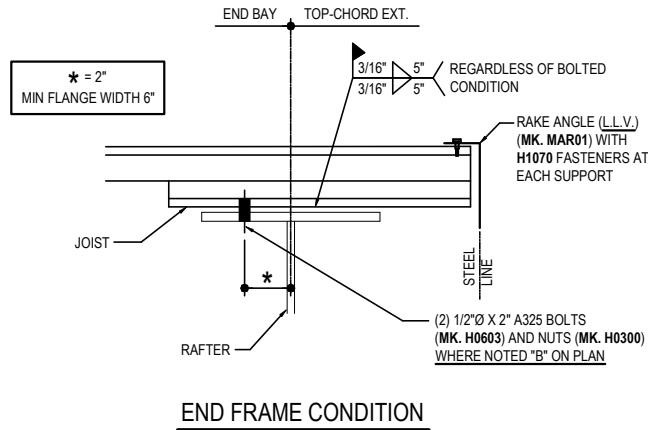
**BH1000**

**Detailer Notes:**

- 1) N/A

**BH1010 - WELDED STRUT JOIST CONNECTIONS**

[Download the DWG file by clicking here.](#)



FOR WELDED ROOF JOIST SYSTEM.  
APPLIES ONLY TO LOCATIONS DESIGNATED  
WITH RELATED SQUARE SYMBOL.

**STRUT JOIST CONNECTIONS**

LONGSPAN WELDED ROOF JOIST SYSTEM  
REFERENCE ERECTOR NOTE FOR TYPICAL WASHER REQUIREMENTS

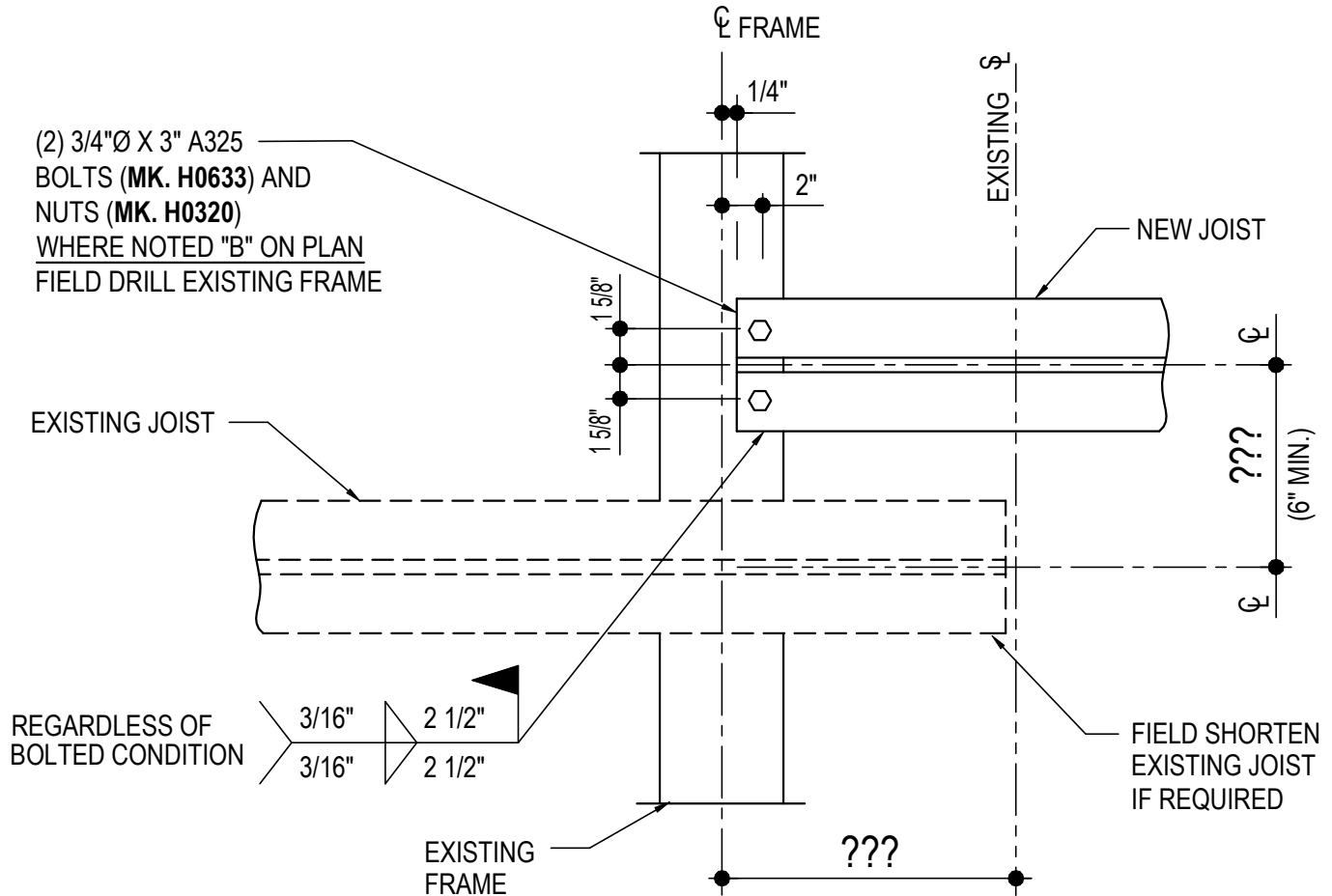
**BH1010**

Detailer Notes:

- 1) N/A

BH1100 - NEW JOIST TIE-IN CONNECTION TO EXISTING END FRAME

[Download the DWG file by clicking here.](#)



**NEW JOIST TIE-IN CONNECTION TO EXISTING END FRAME**

LONGSPAN ROOF JOIST AT EXISTING END FRAME (WELDED SYSTEM)  
REFERENCE ERECTOR NOTE FOR TYPICAL WASHER REQUIREMENTS

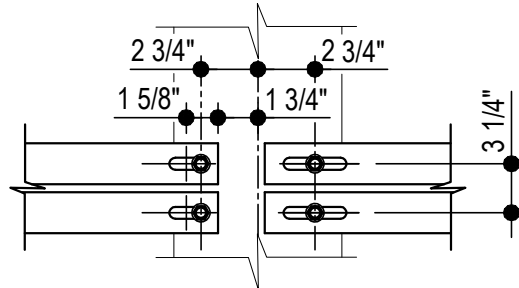
**BH1100**

Detailer Notes:

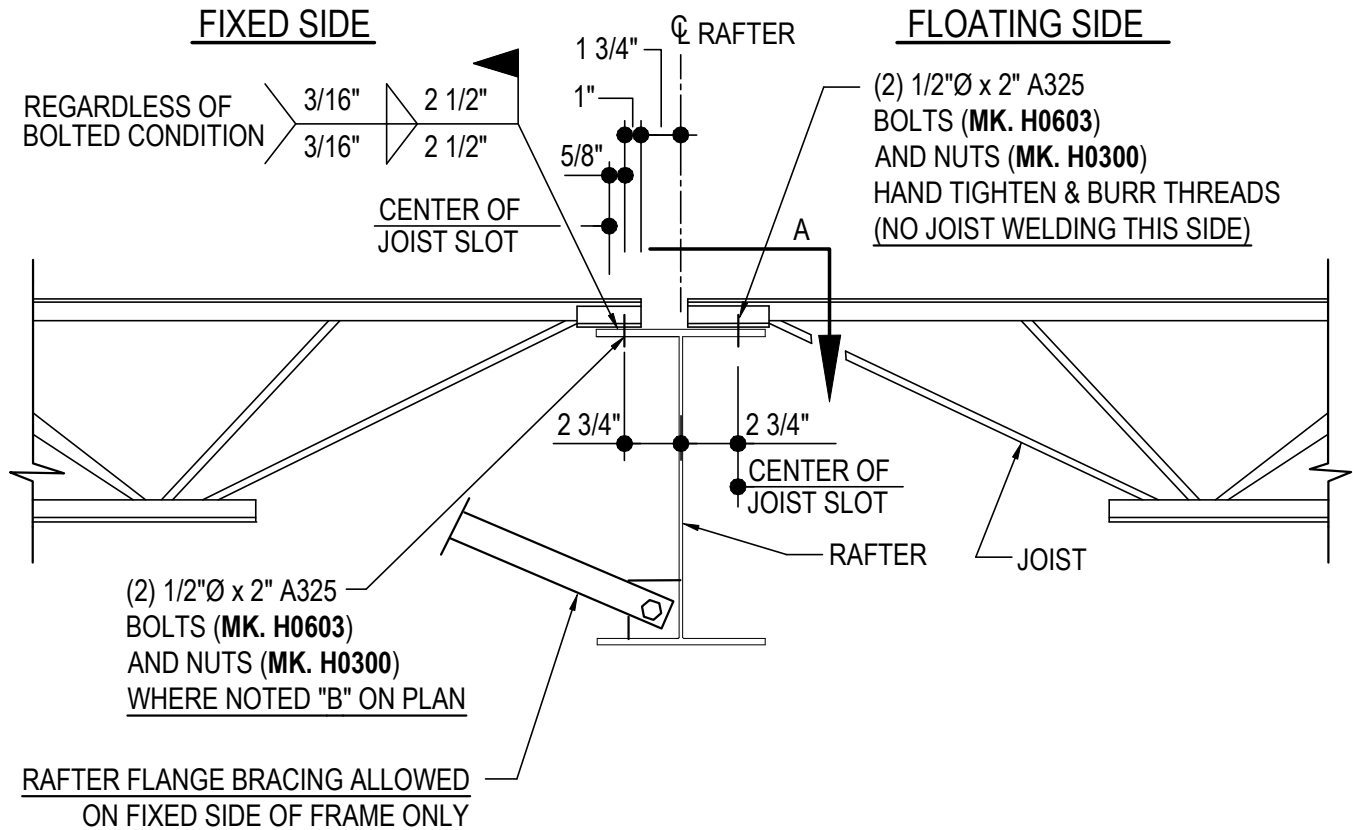
1) THIS DETAIL UTILIZES ATTRIBUTES. TO ACCESS ATTRIBUTES DOUBLE CLICK ON THE DETAIL.

BH1200 - INTERIOR ROOF JOIST AT STRUCTURAL EXPANSION

[Download the DWG file by clicking here.](#)



**SECTION A**



**INTERIOR JOIST CONNECTION DETAIL**

LONGSPAN ROOF JOIST AT STRUCTURAL EXPANSION (WELDED SYSTEM)  
REFERENCE ERECTOR NOTE FOR TYPICAL WASHER REQUIREMENTS

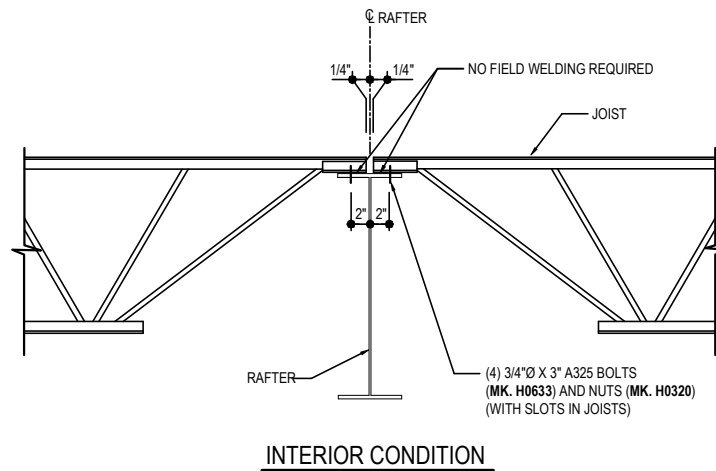
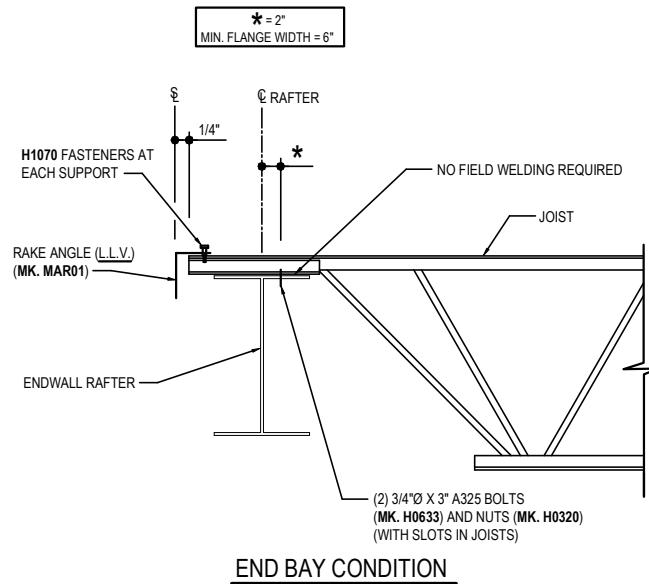
**BH1200**

Detailer Notes:

- 1) THIS CONDITION WILL ALWAYS REQUIRE COORDINATION WITH VULCRAFT. SEE DETAILING PROCEDURE MANUAL FOR FURTHER INFORMATION.

**BH2000 - BOLTED JOIST CONNECTION AT RAFTERS**

[Download the DWG file by clicking here.](#)



**JOIST CONNECTION DETAIL**

LONGSPAN BOLTED ROOF JOIST SYSTEM  
REFERENCE ERECTOR NOTE FOR TYPICAL WASHER REQUIREMENTS

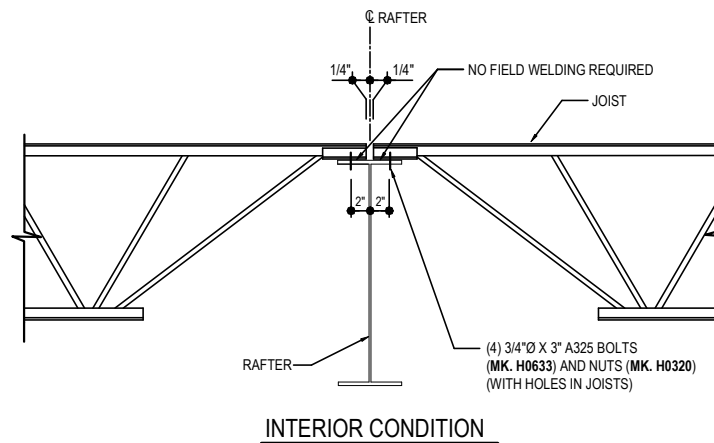
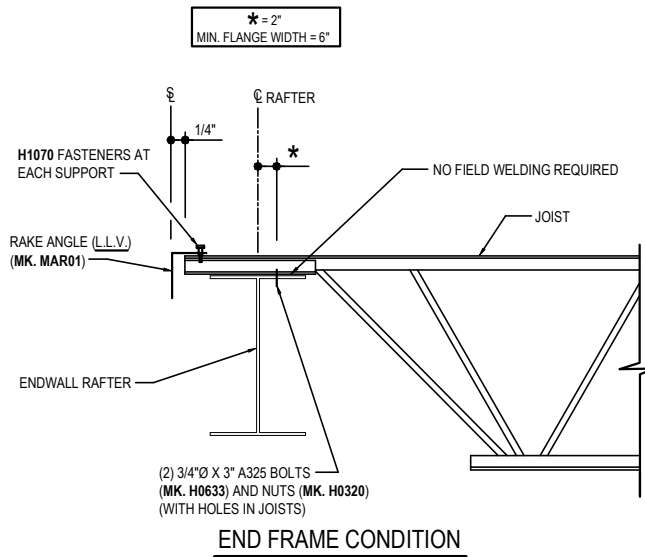
**BH2000**

**Detailer Notes:**

- 1) THIS IS OUR STANDARD BOLTED JOIST CONNECTION WITH SLOTS IN THE JOISTS.

**BH2010 - BOLTED STRUT JOIST CONNECTION AT RAFTERS (WITH 3/4Ø BOLTS)**

[Download the DWG file by clicking here.](#)



FOR BOLTED ROOF JOIST SYSTEM.  
APPLIES ONLY TO LOCATIONS DESIGNATED  
WITH RELATED TRIANGLE SYMBOL.



**STRUT JOIST CONNECTION DETAIL**

LONGSPAN BOLTED ROOF JOIST SYSTEM  
REFERENCE ERECTOR NOTE FOR TYPICAL WASHER REQUIREMENTS

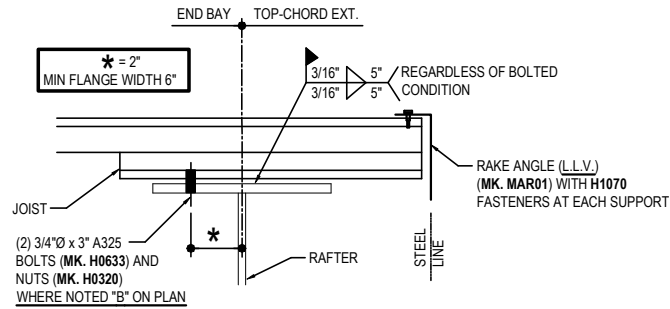
**BH2010**

**Detailer Notes:**

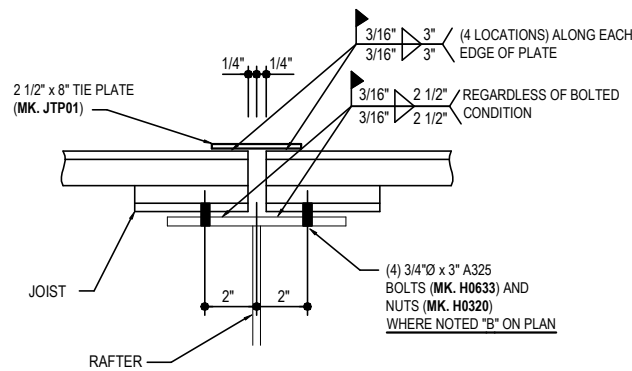
- 1) THE DIFFERENCE BETWEEN DETAILS BH2000 AND BH2010, ARE THE HOLES IN THE JOIST FOR THE STRUT CONDITION FOR DETAIL BH2010.

**BH2020 - BOLTED STRUT JOIST CONNECTION AT RAFTERS (WITH WELD)**

[Download the DWG file by clicking here.](#)



**END FRAME CONDITION**



**INTERIOR CONDITION**

FOR BOLTED ROOF JOIST SYSTEM.  
APPLIES ONLY TO LOCATIONS DESIGNATED  
WITH RELATED SQUARE SYMBOL.

**STRUT JOIST CONNECTIONS**

LONGSPAN BOLTED ROOF JOIST SYSTEM WITH WELD AT RAFTER  
REFERENCE ERECTOR NOTE FOR TYPICAL WASHER REQUIREMENTS

**BH2020**

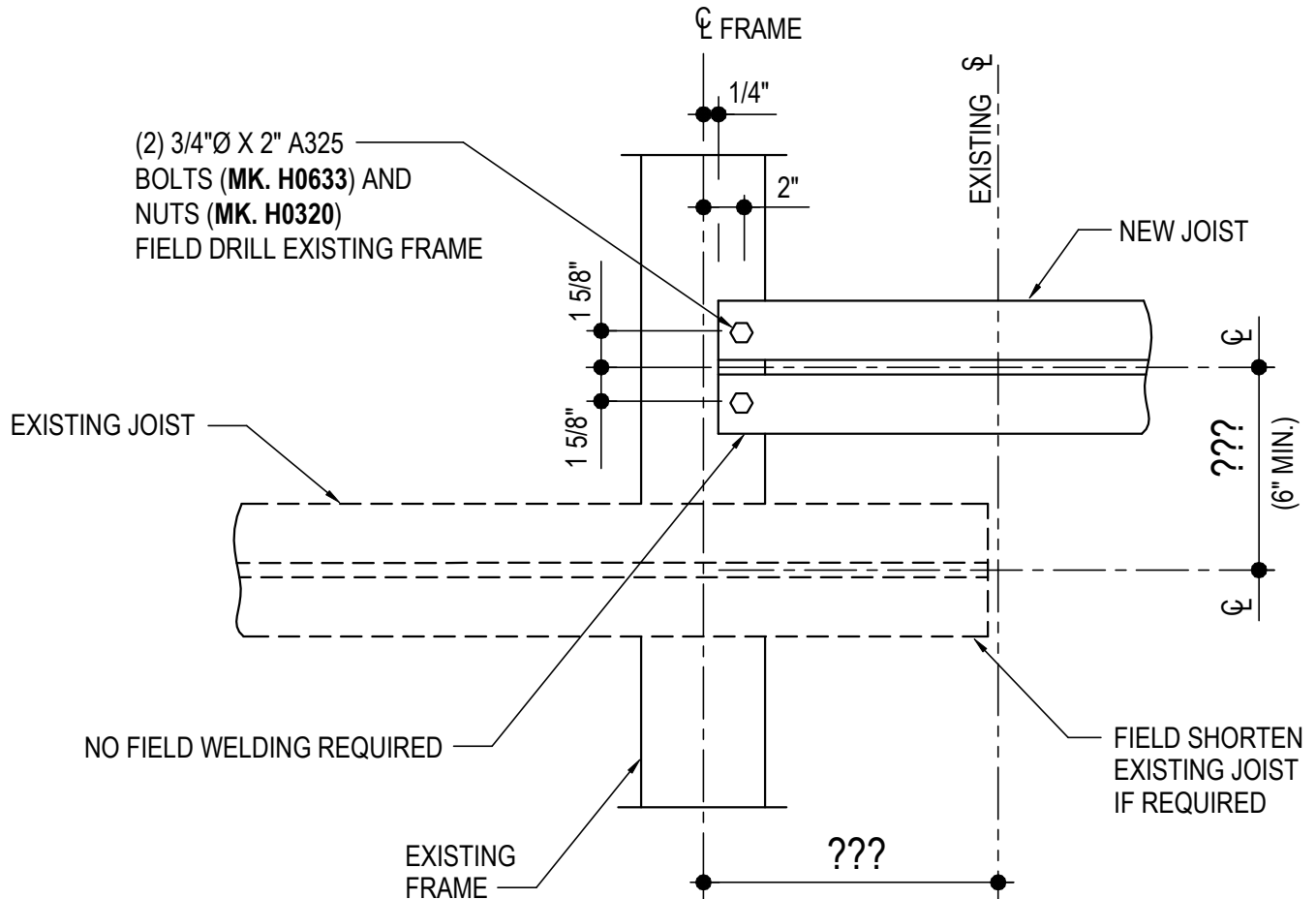
**Detailer Notes:**

- 1) N/A



BH2100 - NEW JOIST TIE-IN CONNECTION TO EXISTING END FRAME

[Download the DWG file by clicking here.](#)



## NEW JOIST TIE-IN CONNECTION TO EXISTING END FRAME

LONGSPAN ROOF JOIST AT EXISTING END FRAME (BOLTED SYSTEM)  
REFERENCE ERECTOR NOTE FOR TYPICAL WASHER REQUIREMENTS.

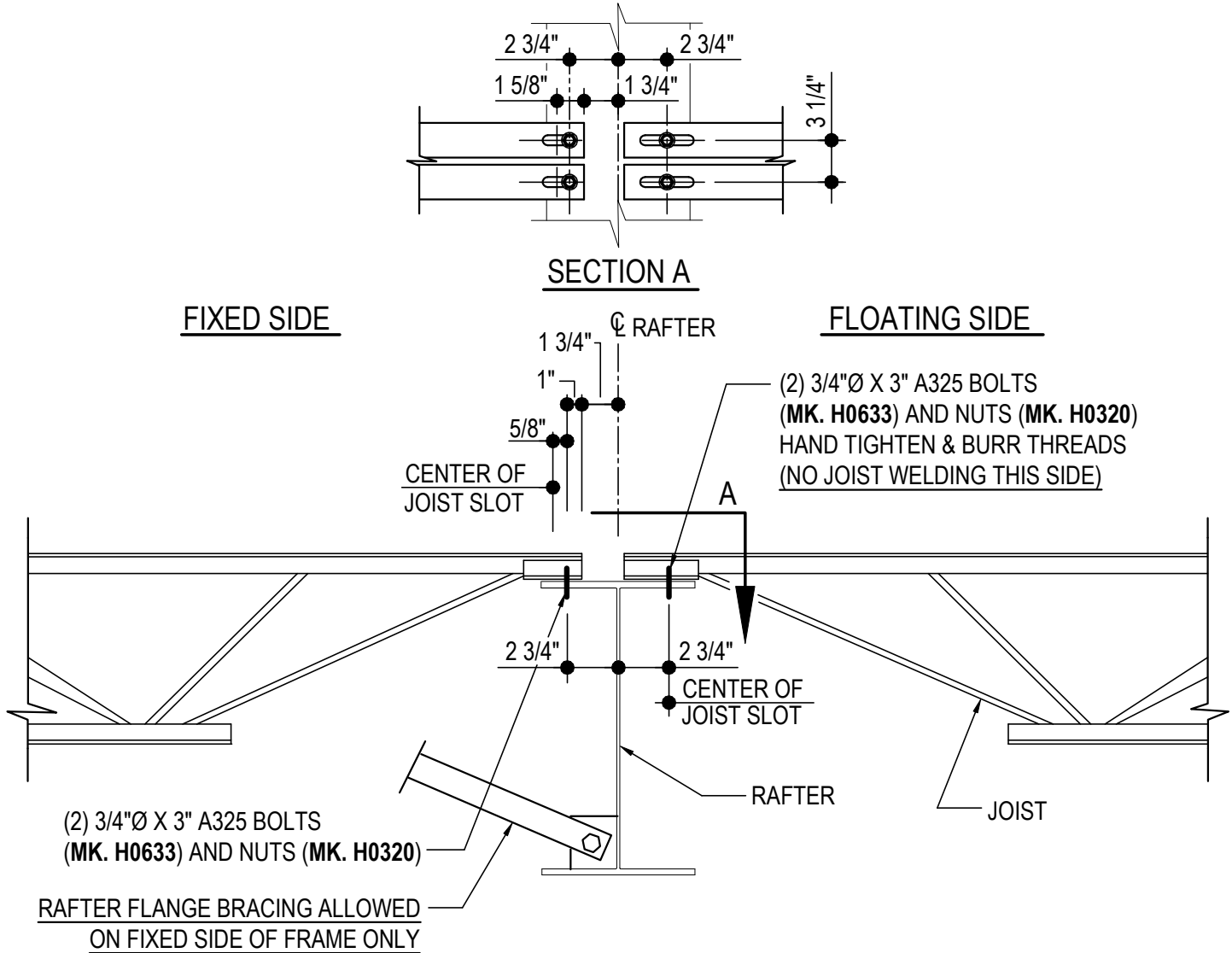
**BH2100**

Detailer Notes:

- 1) THIS DETAIL UTILIZES ATTRIBUTES. TO ACCESS ATTRIBUTES DOUBLE CLICK ON THE DETAIL.

BH2200 - INTERIOR ROOF JOIST AT STRUCTURAL EXPANSION

[Download the DWG file by clicking here.](#)



**INTERIOR JOIST CONNECTION DETAIL**

LONGSPAN ROOF JOIST AT STRUCTURAL EXPANSION (BOLTED SYSTEM)  
REFERENCE ERECTOR NOTE FOR TYPICAL WASHER REQUIREMENTS

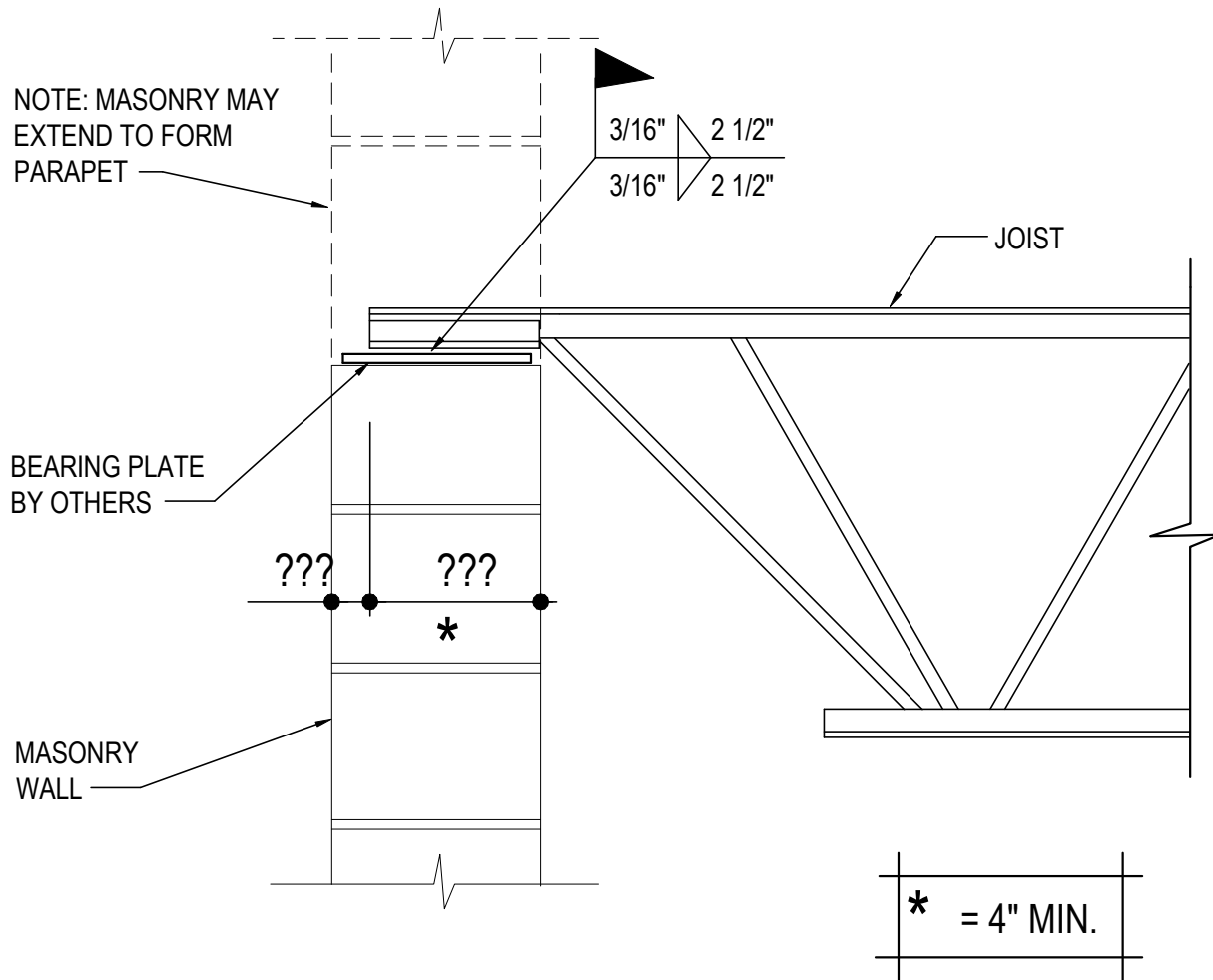
**BH2200**

Detailer Notes:

- 1) THIS CONDITION WILL ALWAYS REQUIRE COORDINATION WITH VULCRAFT. SEE DETAILING PROCEDURE MANUAL FOR FURTHER INFORMATION.

BH3000 - JOIST CONNECTION AT MASONRY END SUPPORT

[Download the DWG file by clicking here.](#)



**JOIST CONNECTION DETAIL**

LONGSPAN ROOF JOIST AT MASONRY END SUPPORT

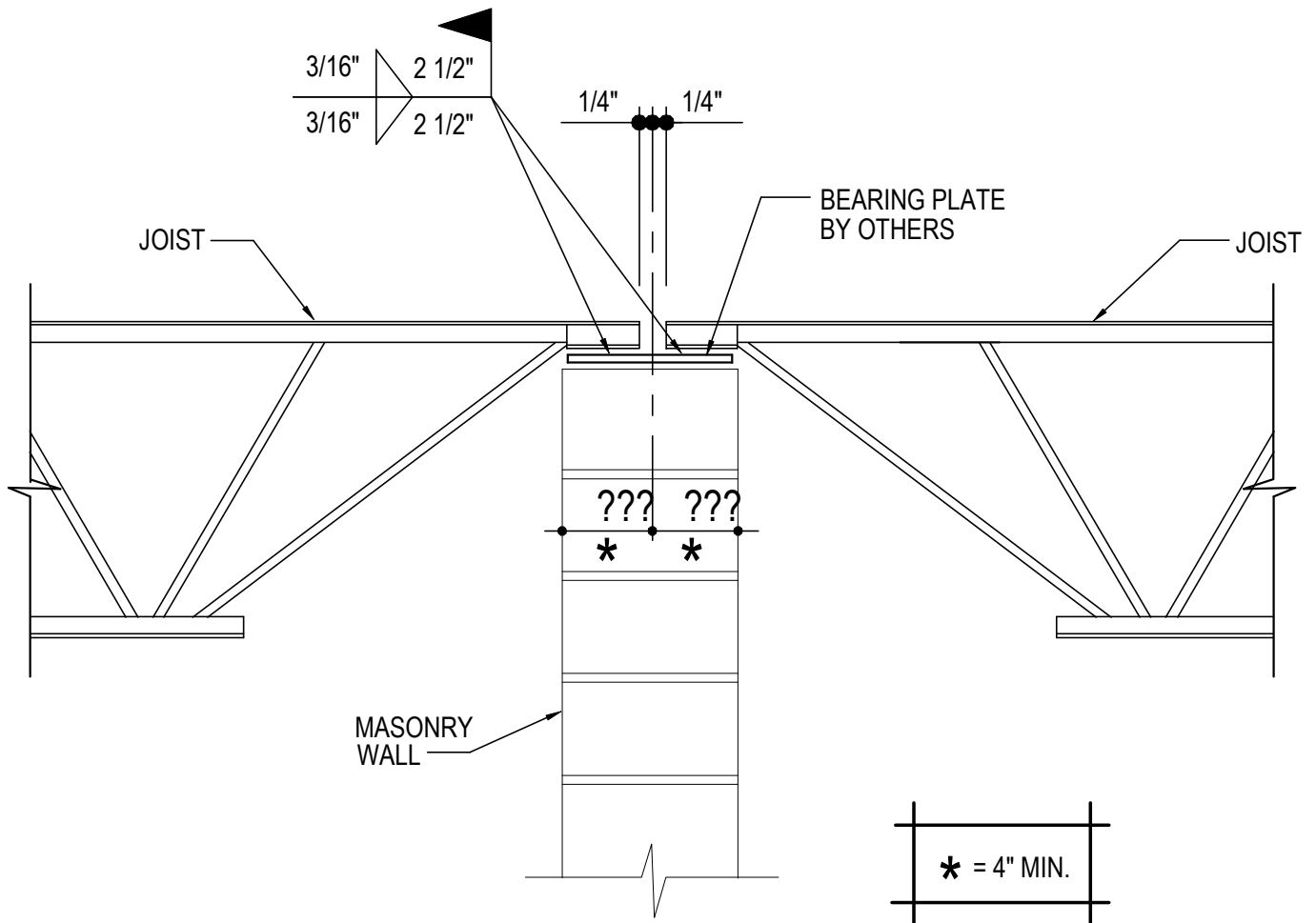
**BH3000**

Detailer Notes:

- 1) THIS DETAIL UTILIZES ATTRIBUTES. TO ACCESS ATTRIBUTES DOUBLE CLICK ON THE DETAIL.

BH3010 - JOIST CONNECTION AT MASONRY INTERIOR SUPPORT

[Download the DWG file by clicking here.](#)



## JOIST CONNECTION DETAIL

LONGSPAN ROOF JOIST AT MASONRY INTERIOR SUPPORT

**BH3010**

Detailer Notes:

- 1) THIS DETAIL UTILIZES ATTRIBUTES. TO ACCESS ATTRIBUTES DOUBLE CLICK ON THE DETAIL.