

**SW EW INSET GIRT CONDITIONS**

CB0015 - SW OR EW HOT ROLL INSET GIRT DETAIL

CB1001 - INSET GIRT BOLT PLACEMENT DETAIL

CB1010 - INSET GIRT DETAIL

CB2000 - INSET GIRT TO ENDWALL RAFTER DETAIL

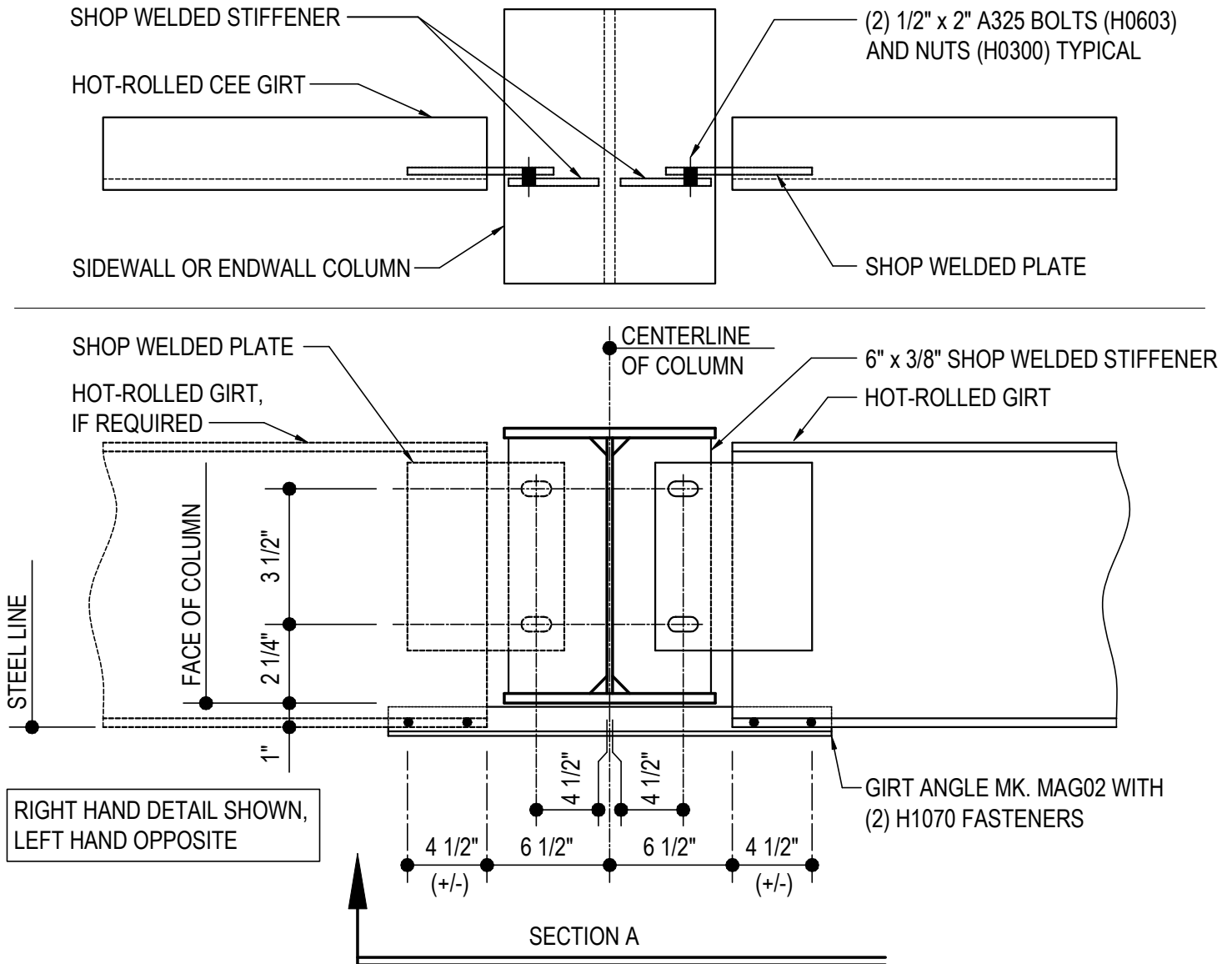
CB2010 - GIRT TO SINGLE CEE RAFTER

CB2020 - GIRT TO DOUBLE CEE RAFTER

---

CB0015 - SW OR EW HOT ROLL INSET GIRT DETAIL

[Download the DWG file by clicking here.](#)



## SW OR EW HOT ROLL GIRT DETAIL

INSET GIRTS AT INTERIOR BAY COLUMNS

NOTE: USE (4) 1/2" x 2" A325 BOLTS (MK. H0603) & NUTS (MK. H0300)

REFERENCE ERECTOR NOTE FOR TYPICAL WASHER REQUIREMENTS

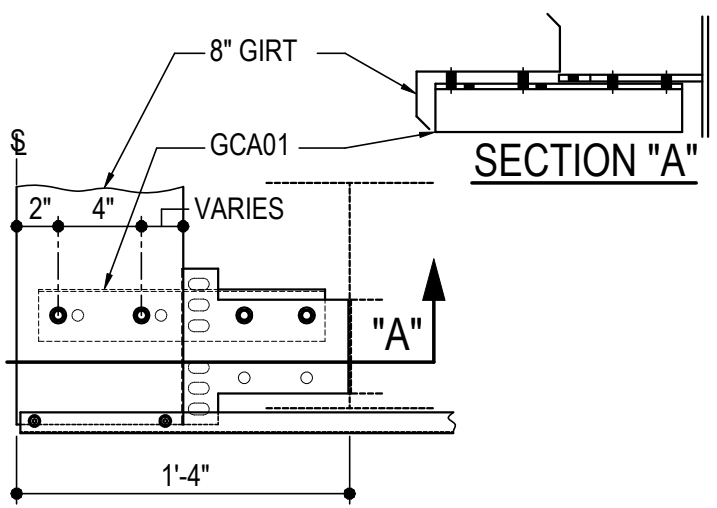
**CB0015**

Detailer Notes:

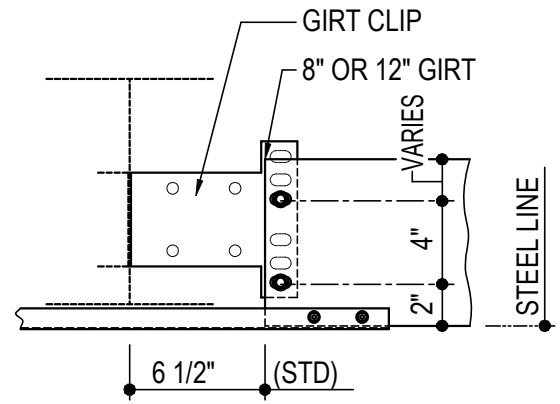
- 1) SHOP WELDED PLATE AT HOT-ROLLED CEE GIRT = GCP06

CB1001 - INSET GIRT BOLT PLACEMENT DETAIL

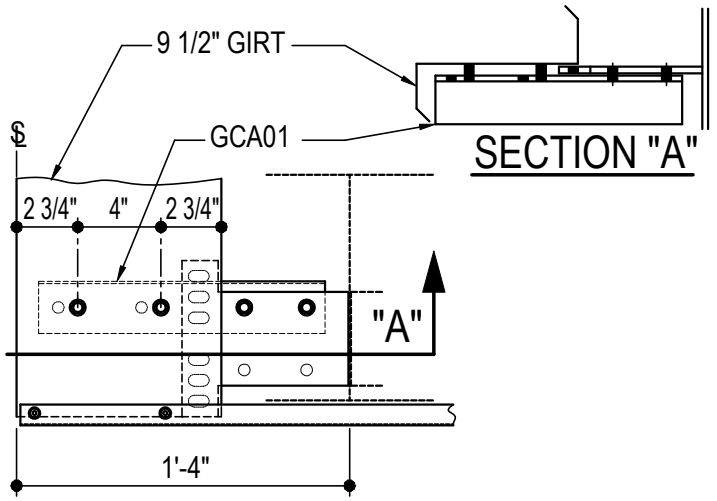
[Download the DWG file by clicking here.](#)



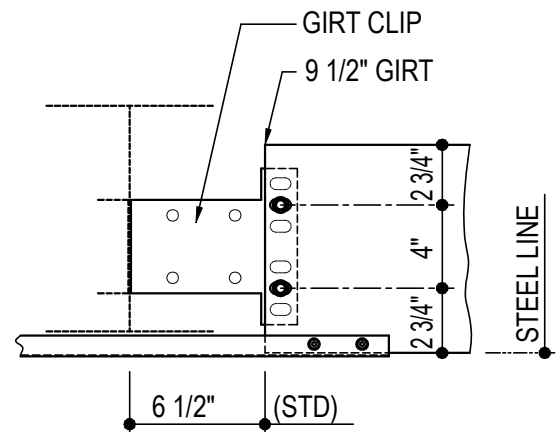
**8" OR 12" GIRT AT CORNER**



**8" OR 12" GIRT AT SW OR EW**



**9 1/2" GIRT AT CORNER**



**9 1/2" GIRT AT SW OR EW**

**INSET GIRT BOLT PLACEMENT DETAIL**

REFERENCE WASHER DETAIL FOR TYPICAL WASHER REQUIREMENTS  
GIRT CLIPS ARE FACTORY PUNCHED TO BE USED WITH MULTIPLE GIRT DEPTHS.  
REFER TO THE DETAILS ABOVE TO DETERMINE WHICH HOLES ARE UTILIZED.

**CB1001**

Detailer Notes:

- 1) N/A

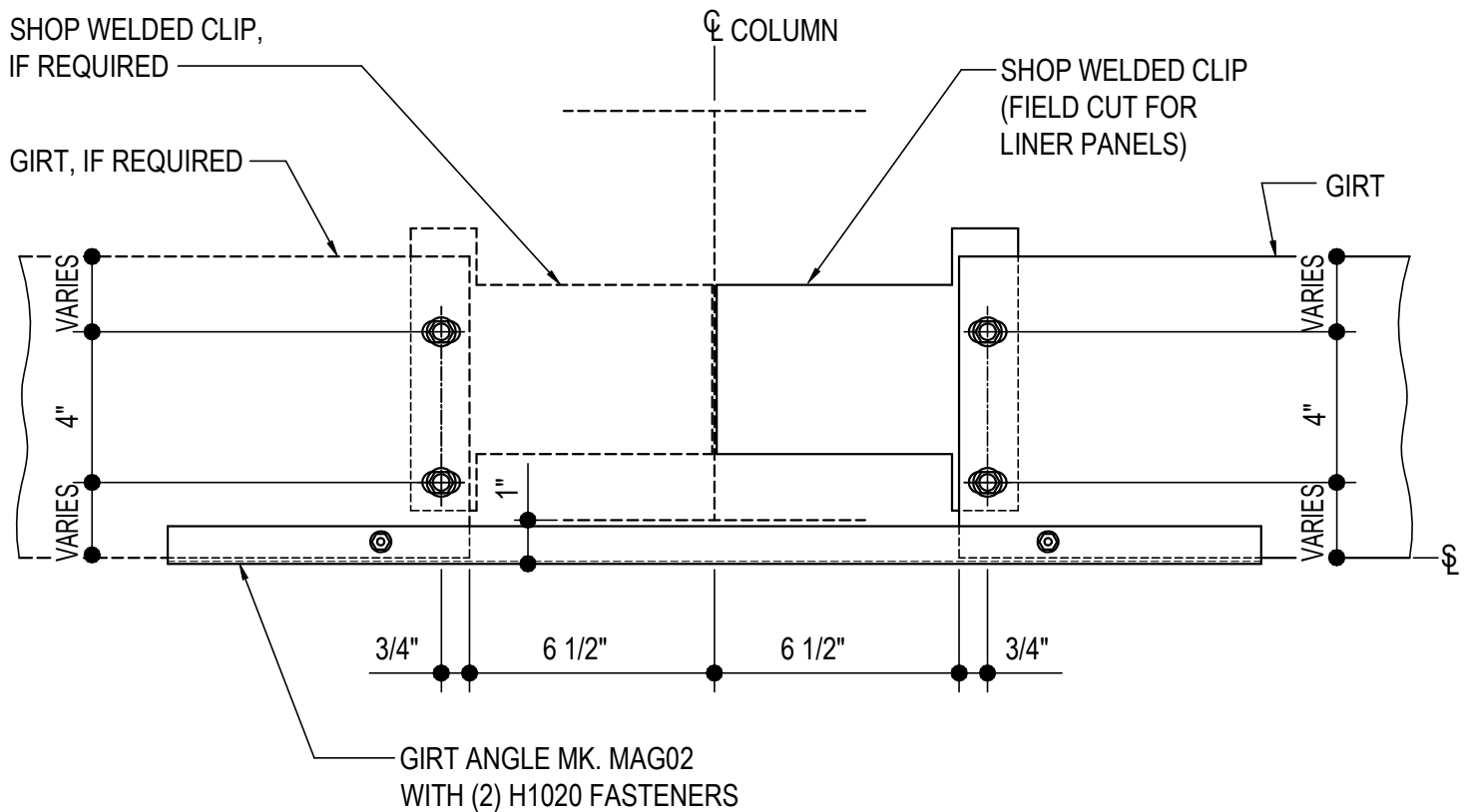
(CB1010 - INSET GIRT DETAIL)

[Download the DWG file by clicking here.](#)

**ERECTOR  
NOTE**

GIRT CLIPS ARE FACTORY PUNCHED TO BE USED WITH MULTIPLE GIRT DEPTHS.  
REFER TO THE STANDARD BOLT PLACEMENT DETAIL(S) FOR PROPER BOLT PLACEMENT.

RIGHT HAND DETAIL SHOWN, LEFT HAND OPPOSITE



**INSET GIRT DETAIL**

INSET GIRTS AT INTERIOR BAY COLUMNS

NOTE: USE (4) 1/2" x 1 1/4" A307 BOLTS H0500/NUTS H0400

REFERENCE STANDARD WASHER DETAIL FOR TYPICAL WASHER REQUIREMENTS

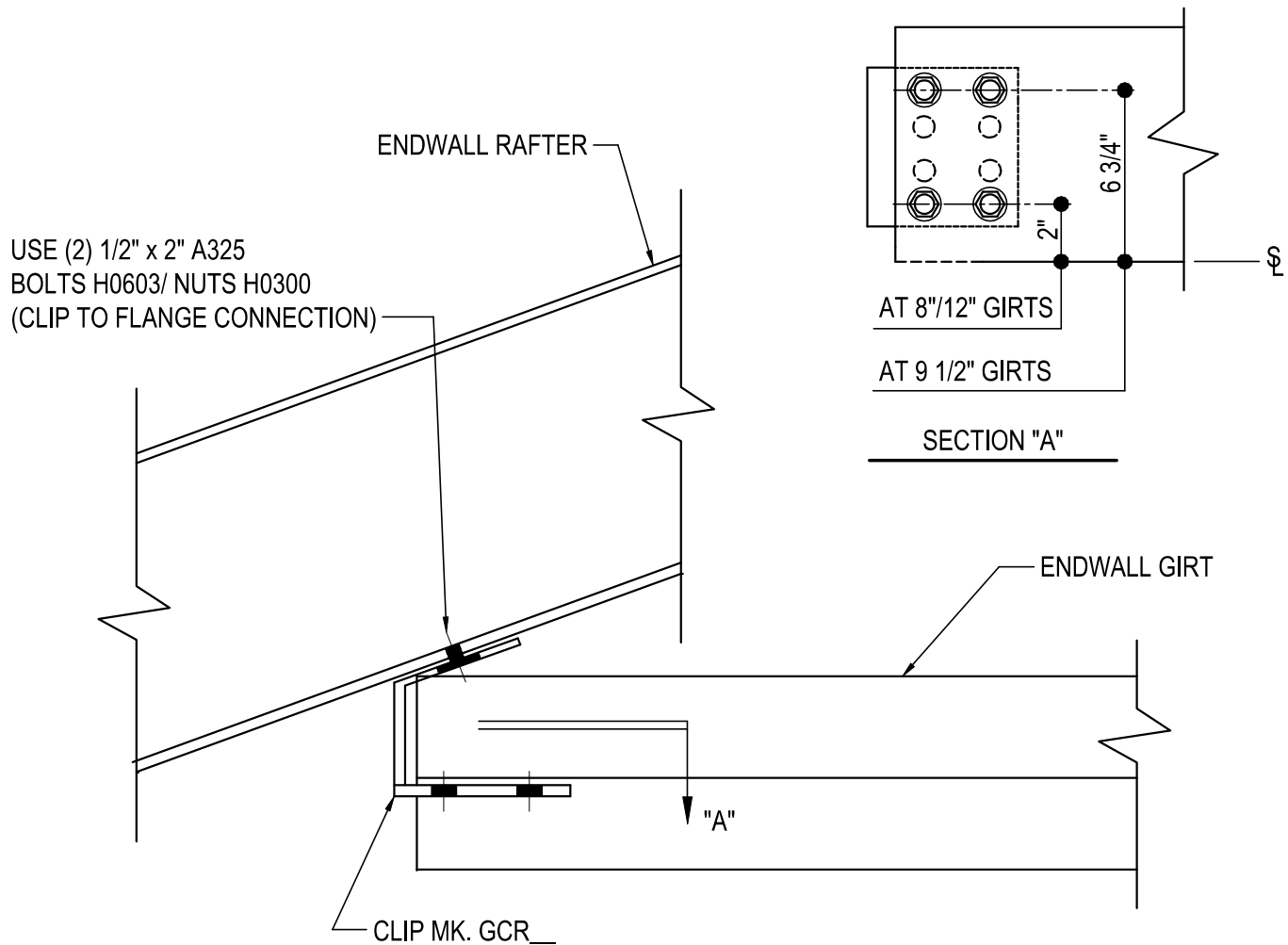
**CB1010**

Detailer Notes:

- 1) WELDED INSET GIRT CLIP TO COLUMN = GF102

## CB2000 - INSET GIRT TO ENDWALL RAFTER DETAIL

[Download the DWG file by clicking here.](#)



## GIRT TO ENDWALL RAFTER

INSET GIRT AT EW RAFTER

(2) 1/2" x 1 1/4" A307 BOLTS H0500/NUTS H0400

REFERENCE ERECTOR NOTE FOR TYPICAL WASHER REQUIREMENTS

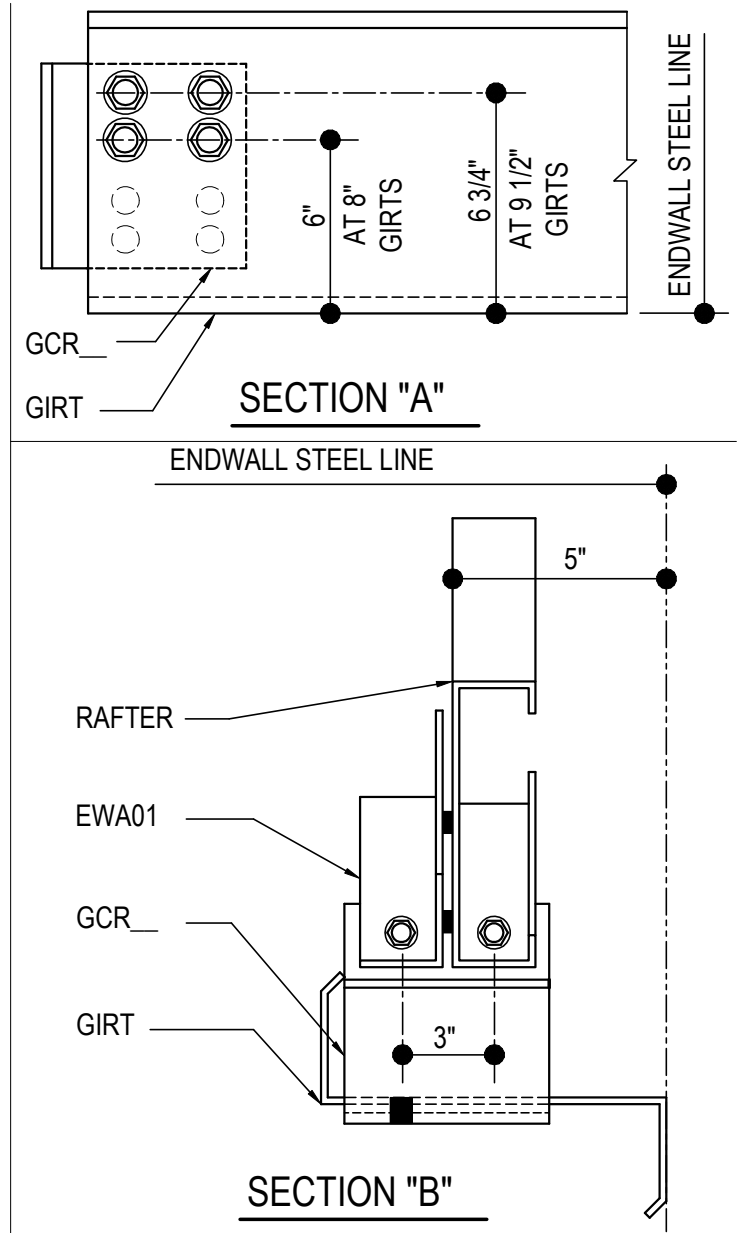
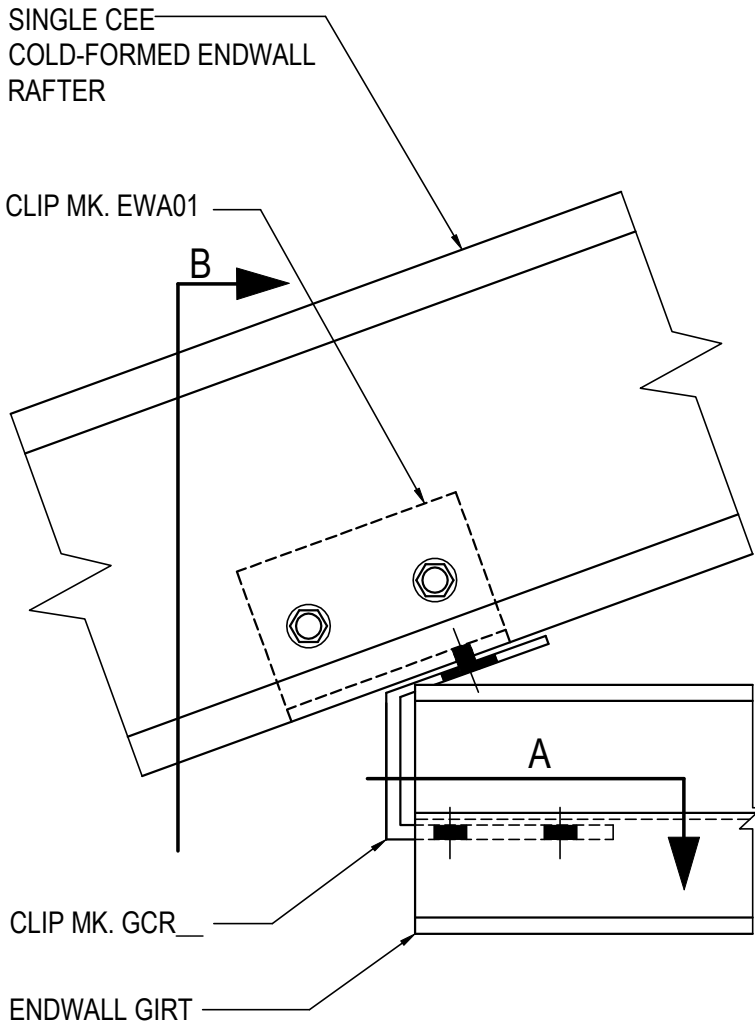
**CB2000**

### Detailer Notes:

- 1) N/A

CB2010 - GIRT TO SINGLE CEE RAFTER

[Download the DWG file by clicking here.](#)



**GIRT TO SINGLE CEE RAFTER**

INSET ZEE GIRT AT SINGLE CEE COLD-FORMED ENDWALL RAFTER  
(6) 1/2" x 1 1/4" A307 BOLTS H0500/NUTS H0400  
REFERENCE ERECTOR NOTE FOR TYPICAL WASHER REQUIREMENTS

**CB2010**

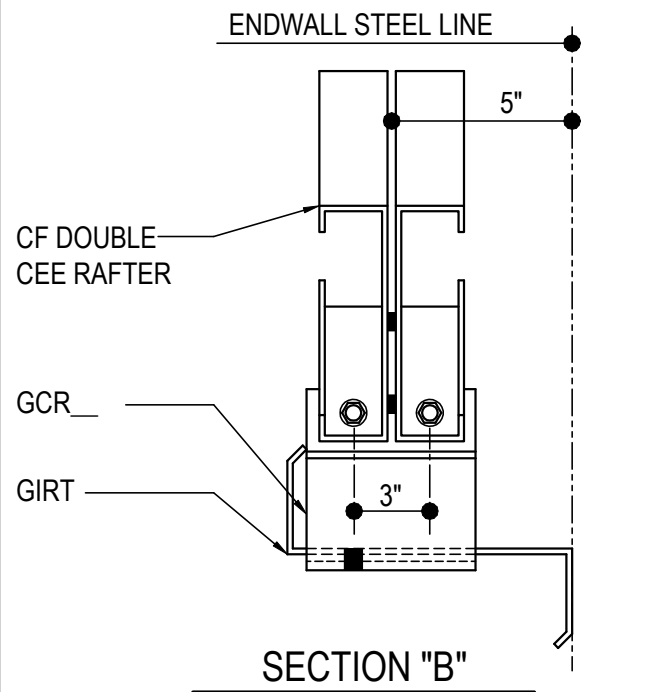
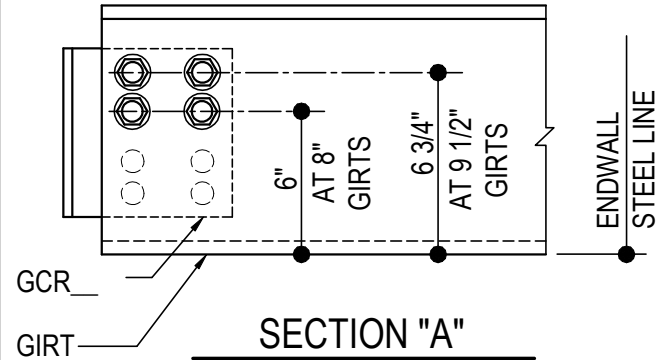
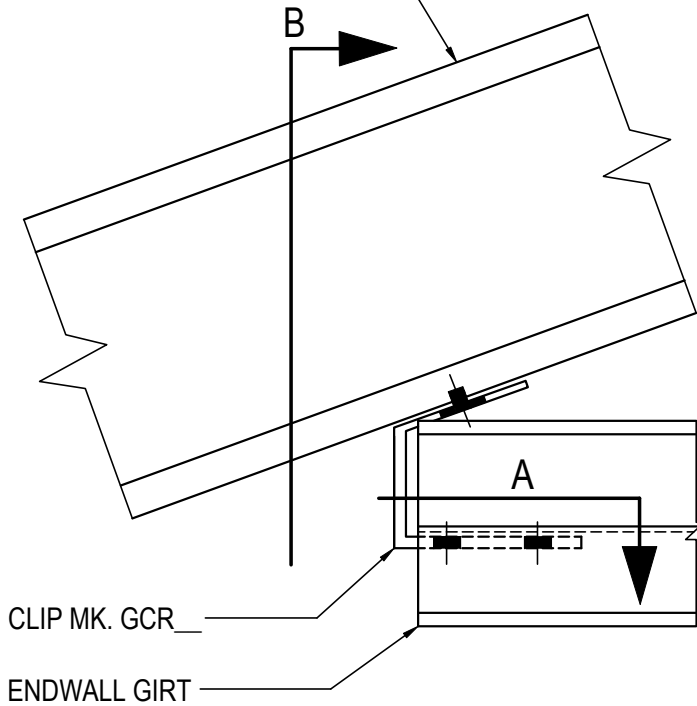
Detailer Notes:

- 1) N/A

CB2020 - GIRT TO DOUBLE CEE RAFTER

[Download the DWG file by clicking here.](#)

DOUBLE CEE  
COLD-FORMED ENDWALL  
RAFTER



**GIRT TO DOUBLE CEE RAFTER**

INSET ZEE GIRT AT DOUBLE CEE COLD-FORMED ENDWALL RAFTER  
(6) 1/2" x 1 1/4" A307 BOLTS H0500/NUTS H0400  
REFERENCE ERECTOR NOTE FOR TYPICAL WASHER REQUIREMENTS

**CB2020**

Detailer Notes:

- 1) N/A