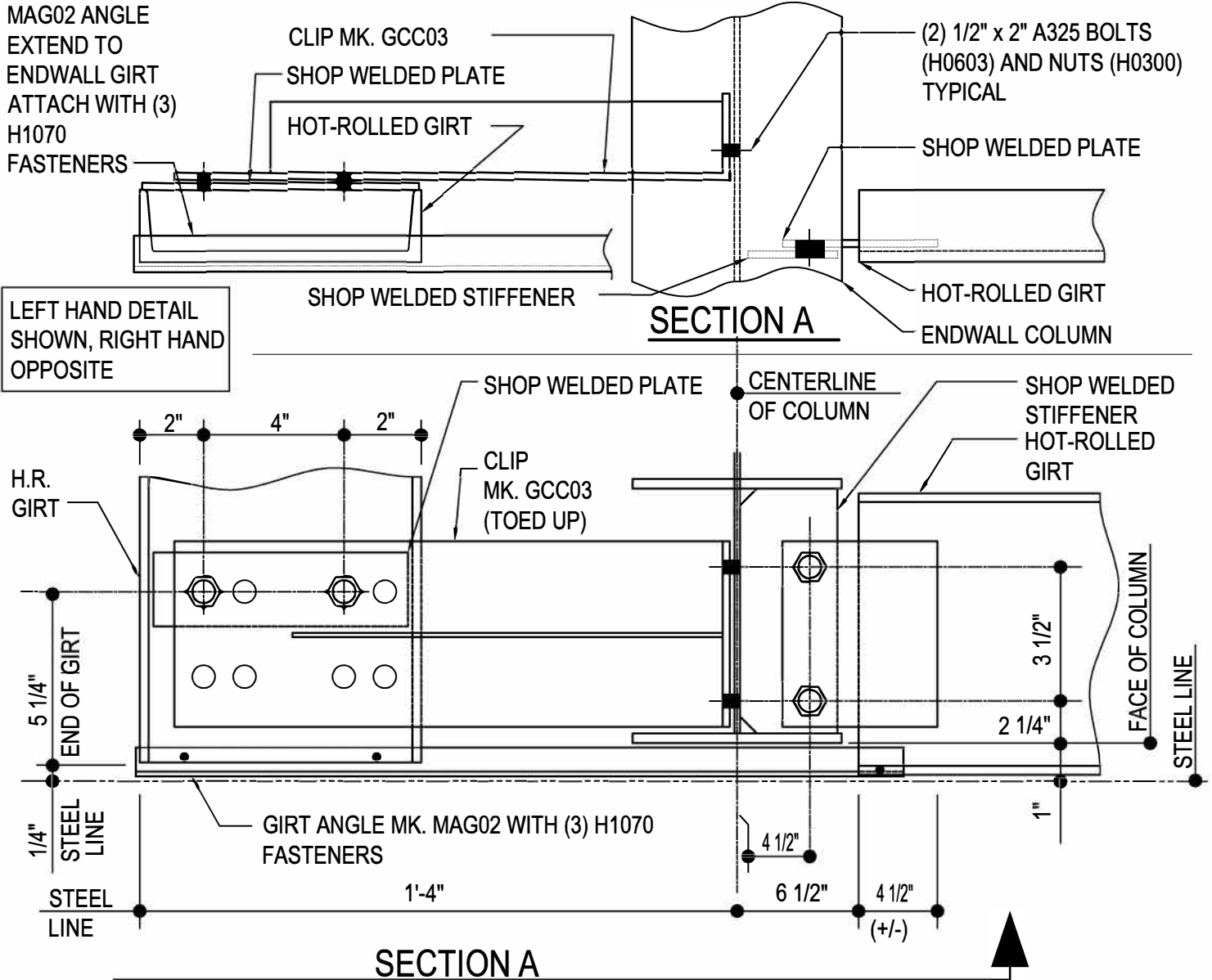


INSET GIRT DETAILS

- CE0015 - INSET CORNER 8" H.R. GIRT DETAIL
 - CE0110 - INSET CORNER COLUMN GIRT DETAIL
 - CE0241 - INSET CORNER GIRT DETAIL
 - CE1010 - INSET CORNER WELDED GIRT DETAIL
 - CE1030 - INSET TO INSET CORNER DETAIL
-

CE0015 - INSET CORNER 8" H.R. GIRT DETAIL

[Download the DWG file by clicking here.](#)



HOT-ROLLED GIRT CORNER DETAIL

8" HOT-ROLLED GIRT AT INSET CORNER.

NOTE: USE (6) 1/2" x 2" A325 BOLTS (MK. H0603) & NUTS (MK. H0300)
REFERENCE ERECTOR NOTE FOR TYPICAL WASHER REQUIREMENTS

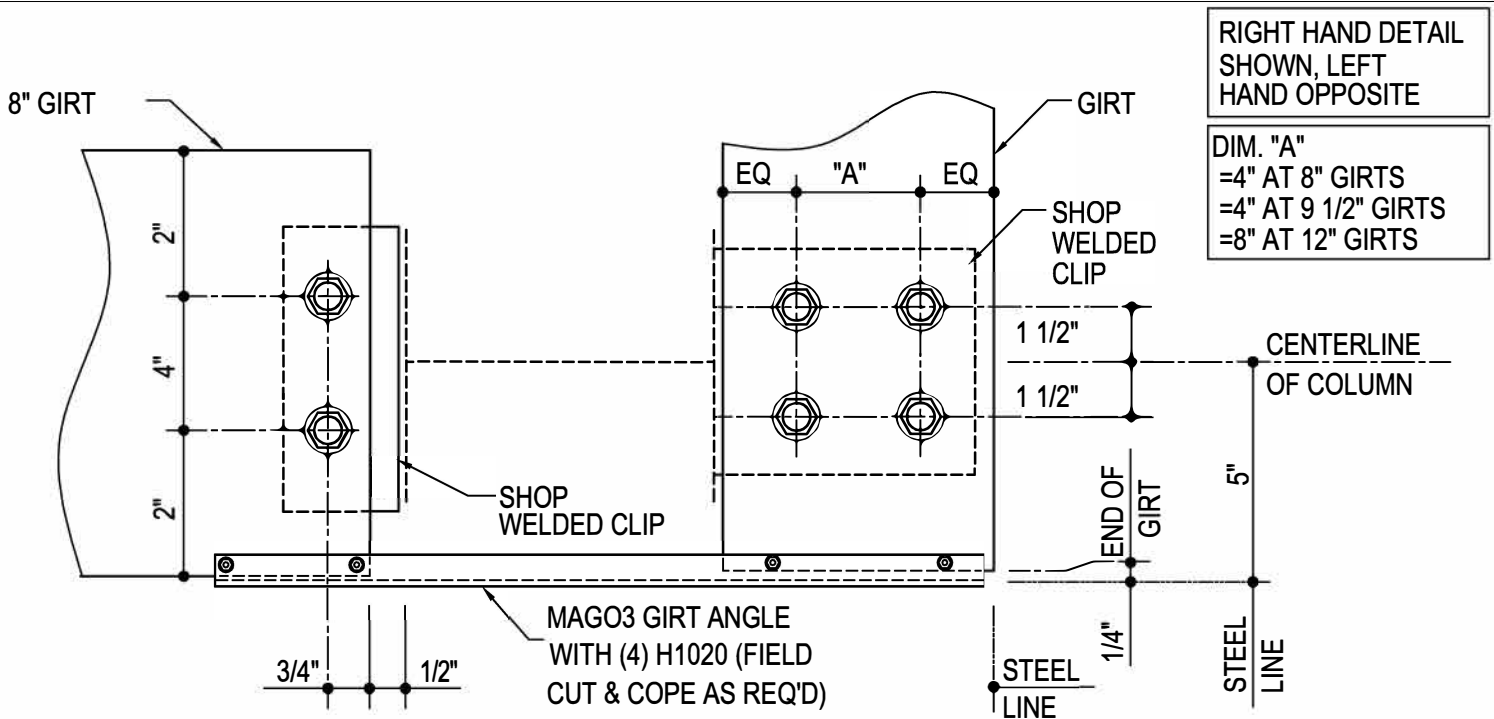
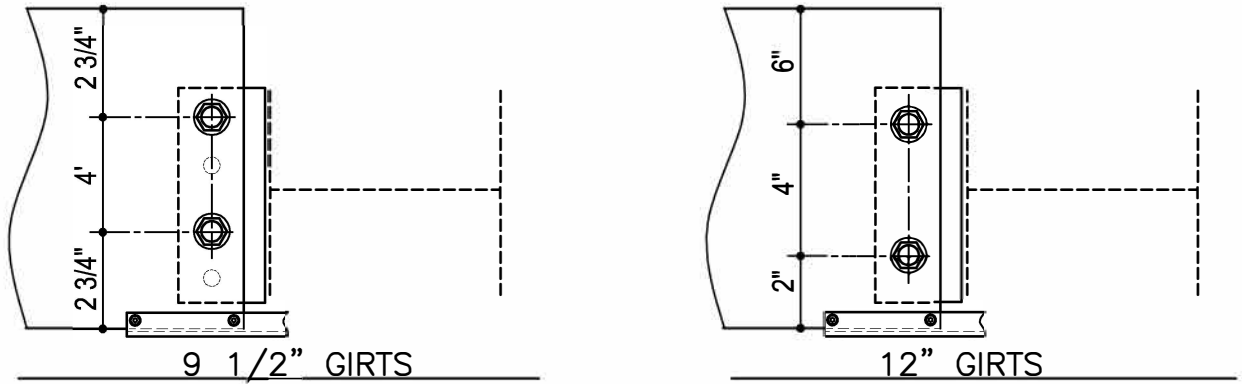
CE0015

Detailer Notes:

- 1) DETAIL FOR HOT ROLLED & BUILT-UP COLUMN ONLY
- 2) CLIP TO HR GIRT & STIFFENER: GCP06
- 3) STIFFENER TO COLUMN: STFBR
- 4) CLIP TO HR GIRT: HCS08

CE0110 - INSET CORNER COLUMN GIRT DETAIL

[Download the DWG file by clicking here.](#)



INSET CORNER COLUMN GIRT DETAIL

NOTE: USE (6) 1/2" x 1 1/4" A307 BOLTS H0500/NUTS H0400
REFERENCE STANDARD WASHER DETAIL FOR TYPICAL
WASHER REQUIREMENTS

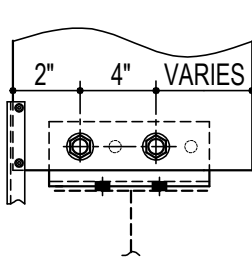
CE0110

Detailer Notes:

- | | |
|--------------------------|--------------------------|
| 1) (4) HOLE WELDED CLIP: | 2) (2) HOLE WELDED CLIP: |
| 8" - PCU01 | 8" - GRC09 |
| 9 1/2" - GCB62 | 9 1/2" - GRC03 |
| 12" - GCB12 | 12" - GRC09 |

CE0241 - INSET CORNER GIRT DETAIL

[Download the DWG file by clicking here.](#)

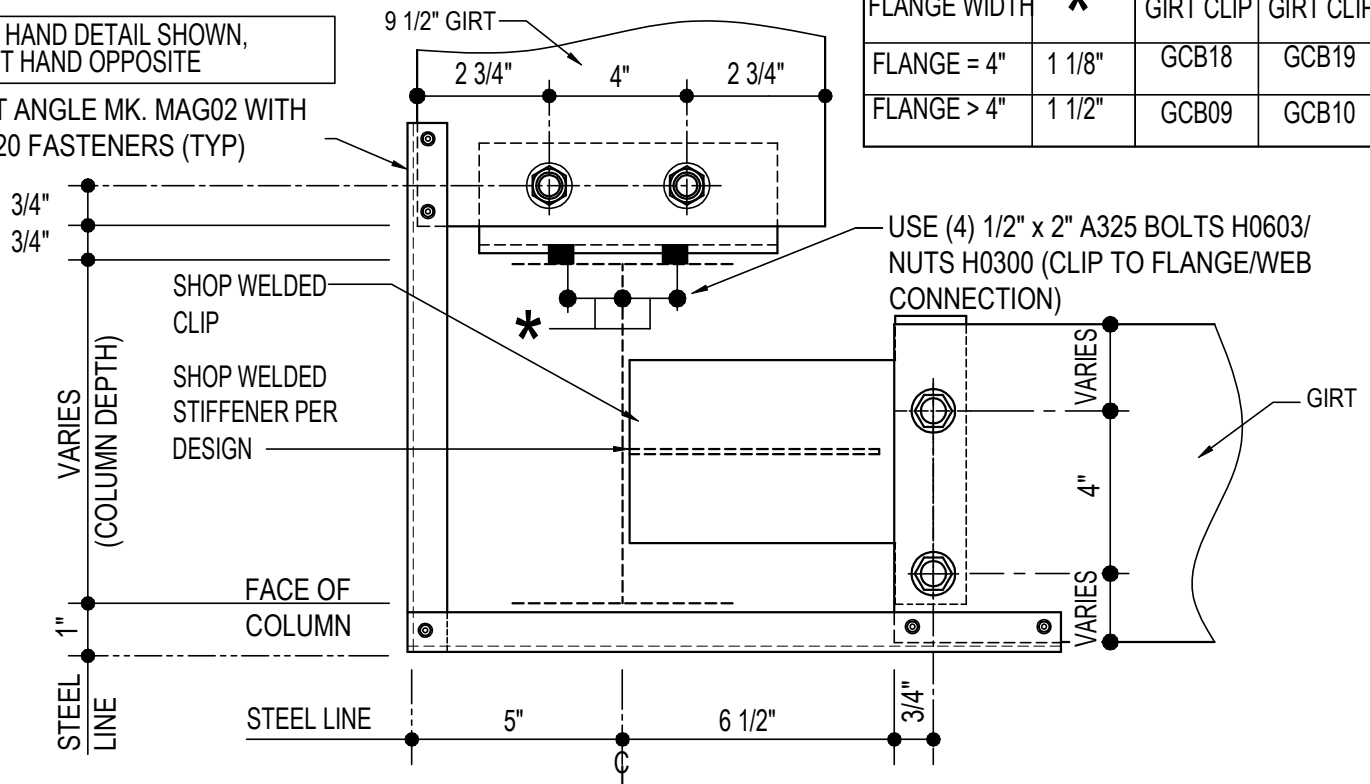


8" & 12" GIRTS
GCB CLIP BOLT PLACEMENT

COLUMN FLANGE WIDTH	*	8"/12" GIRT CLIP	9 1/2" GIRT CLIP
FLANGE = 4"	1 1/8"	GCB18	GCB19
FLANGE > 4"	1 1/2"	GCB09	GCB10

LEFT HAND DETAIL SHOWN,
RIGHT HAND OPPOSITE

(2) GIRT ANGLE MK. MAG02 WITH
(5) H1020 FASTENERS (TYP)



INSET CORNER GIRT DETAIL

NOTE: USE (4) 1/2" x 1 1/4" A307 BOLTS H0500/
NUTS H0400. REFERENCE STANDARD WASHER DETAIL FOR TYPICAL
WASHER REQUIREMENTS

CE0241

Detailer Notes:

- 1) WELDED CLIP TO COLUMN: GF102
- 2) ADD STIFFENER PER DESIGN: WS_04

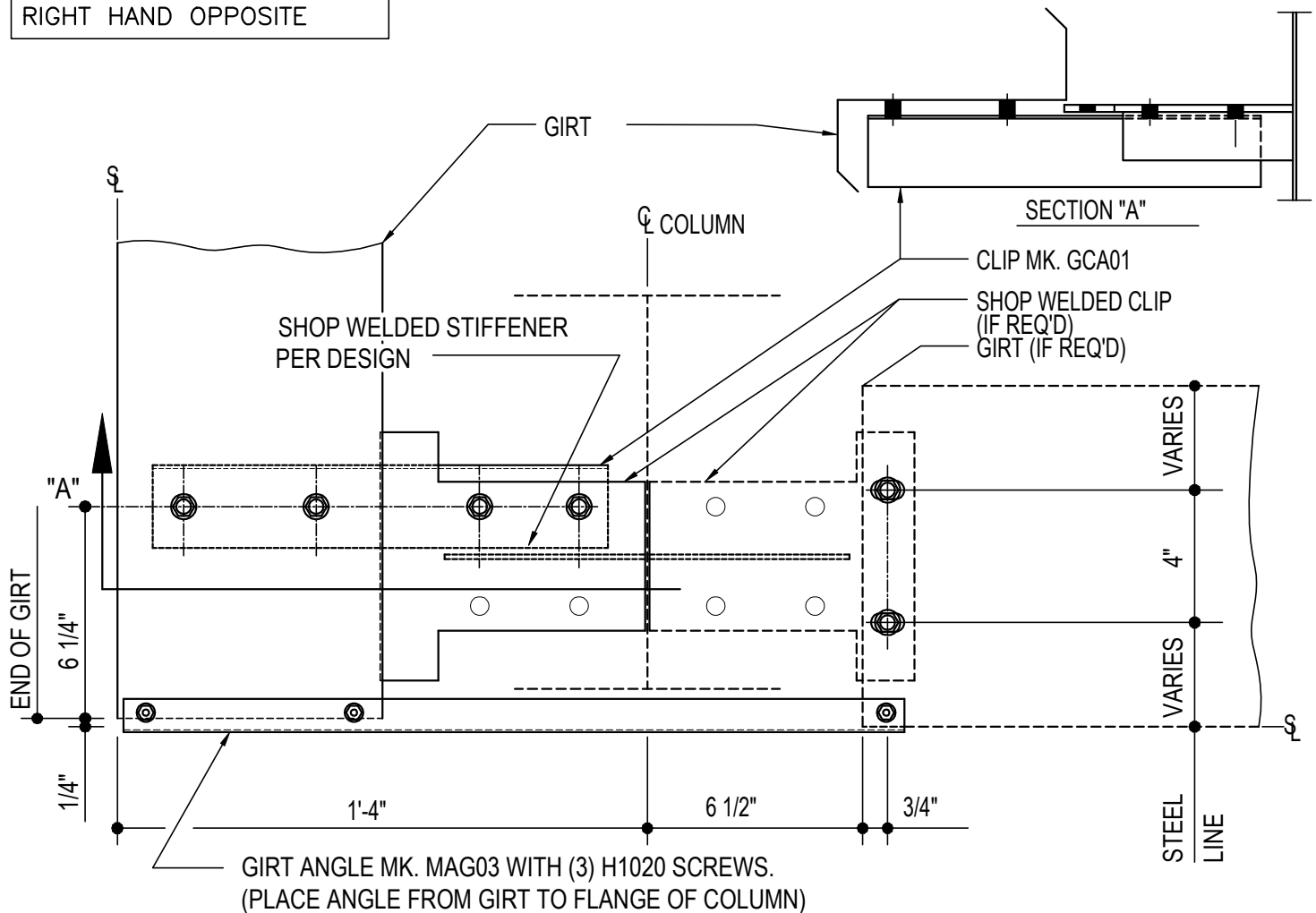
CE1010 - INSET CORNER WELDED GIRT DETAIL

[Download the DWG file by clicking here.](#)

ERECTOR NOTE

GIRT CLIPS ARE FACTORY PUNCHED TO BE USED WITH MULTIPLE GIRT DEPTHS. REFER TO THE STANDARD BOLT PLACEMENT DETAIL(S) FOR PROPER BOLT PLACEMENT.

LEFT HAND DETAIL SHOWN,
RIGHT HAND OPPOSITE



CORNER GIRT DETAIL

CORNER INSET GIRT DETAIL WITH WELDED CLIPS

NOTE: USE (6) 1/2" X 1 1/4" A307 BOLTS H0500/NUTS H0400

REFERENCE WASHER DETAIL FOR TYPICAL WASHER REQUIREMENTS

CE1010

Detailer Notes:

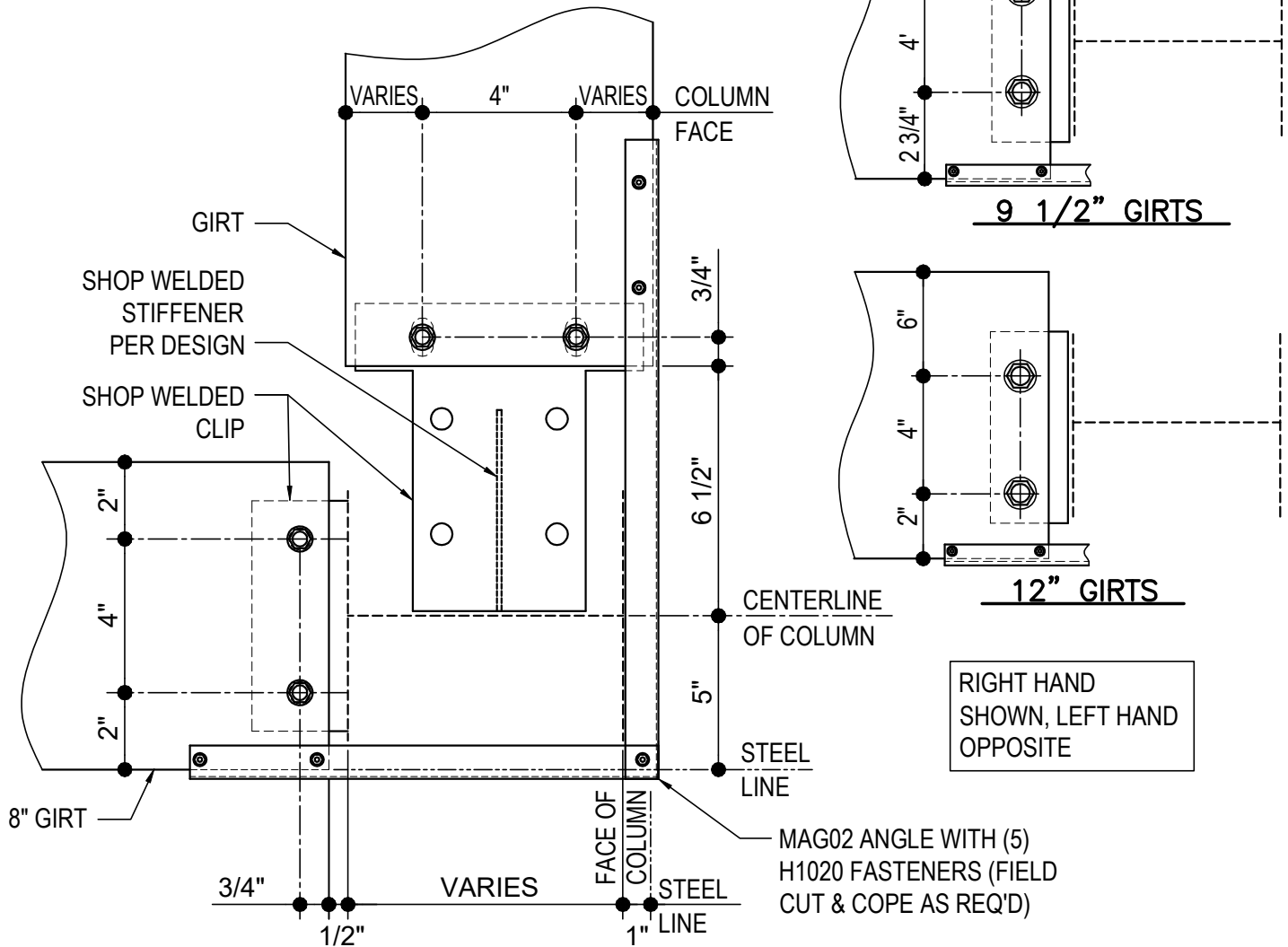
- 1) WELDED CLIPS TO COLUMN: GF102
- 2) ADD STIFFENER PER DESIGN: WS_04

CE1030 - INSET TO INSET CORNER DETAIL

[Download the DWG file by clicking here.](#)

**ERECTOR
NOTE**

GIRT CLIPS ARE FACTORY PUNCHED TO BE USED WITH MULTIPLE GIRT DEPTHS. REFER TO THE STANDARD BOLT PLACEMENT DETAIL(S) FOR PROPER BOLT PLACEMENT.



INSET TO INSET CORNER DETAIL

NOTE: USE (4) 1/2"x 1 1/4" A307 BOLTS H0500/NUTS H0400
REFERENCE STANDARD WASHER DETAIL FOR TYPICAL WASHER REQUIREMENTS

CE1030

Detailer Notes:

- 1) (2) HOLE WELDED CLIP: GRC09 (AT 8" AND 12" GIRTS), GRC03 (AT 9 1/2" GIRTS)
- 2) WELDED CLIP AT COLUMN WEB: GFI02
- 3) ADD STIFFENER PER DESIGN WS_04