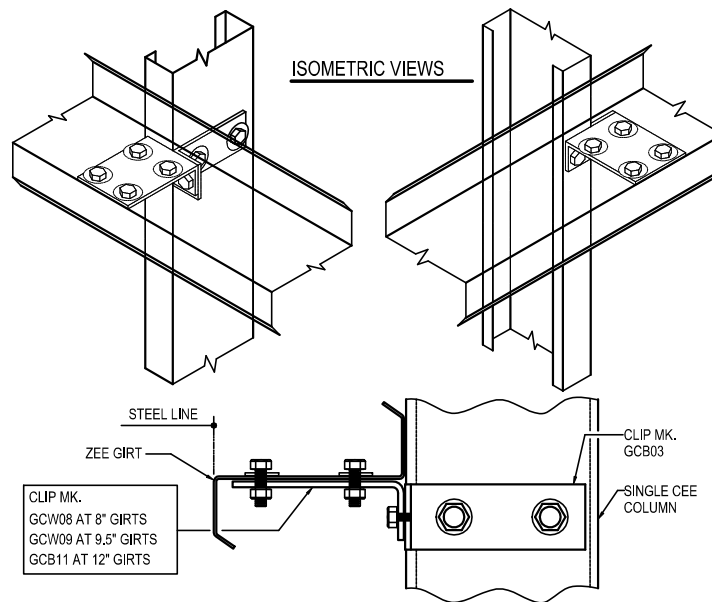
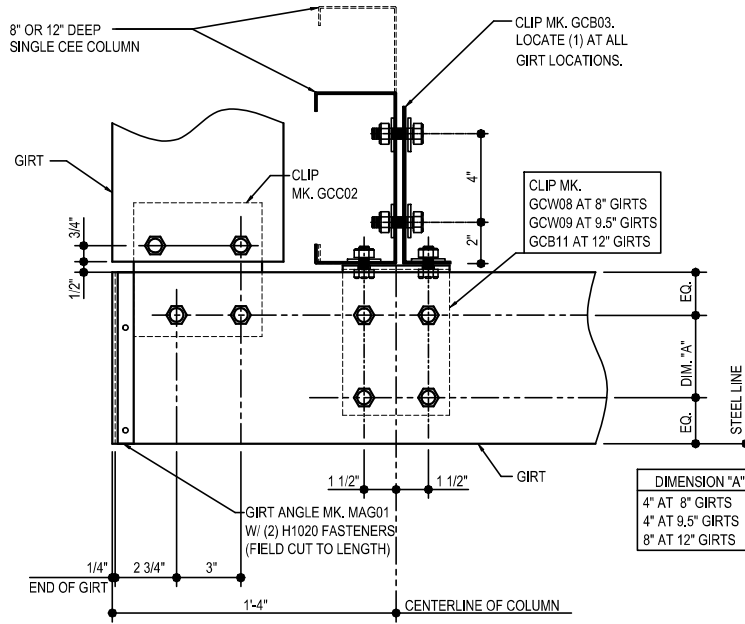


**BYPASS CORNER GIRT DETAILS**

- CF0015 - SINGLE CEE COLUMN AT BYPASS GIRTS
  - CF0250 - GIRT TERMINATION DETAIL
  - CF0256 - H.R. GIRT TERMINATION DETAIL
  - CF0257 - HOT-ROLLED GIRT TERMINATION @ C.F. COL.
  - CF0275 - GIRT TERMINATION @ MASONRY WALL DETAIL
  - CF0351 - SIMPLE SPAN GIRT TERMINATION @ C.F. COL.
  - CF0360 - BYPASS GIRT AT CF CORNER COL.
  - CF0500 - 8" GIRT TERMINATION DETAIL
  - CF0510 - 8" GIRT TERMINATION @ MASONRY WALL DETAIL
  - CF0520 - 9 1/2" GIRT TERMINATION DETAIL
  - CF0530 - 9 1/2" GIRT TERMINATION @ MASONRY WALL DETAIL
  - CF1001 - BOLT PLACEMENT DETAIL
  - CF1010 - BYPASS CORNER GIRT DETAIL
  - CF1020 - BYPASS CORNER CEE GIRT DETAIL
  - CF1060 - BYPASS CORNER HR GIRT DETAIL
  - CF1200 - BYPASS CORNER GIRT TERMINATION DETAIL
  - CF1220 - HR GIRT TERMINATION DETAIL
  - CF1220 - HR GIRT TERMINATION DETAIL
  - CF1260 - BYPASS CORNER GIRT TERMINATION @ MASONRY WALL DETAIL
  - CF1270 - GIRT TERMINATION @ MASONRY WALL DETAIL
  - CF1280 - HR GIRT TERMINATION @ MASONRY WALL DETAIL
-

CF0015 - SINGLE CEE COLUMN AT BYPASS GIRTS

[Download the DWG file by clicking here.](#)



**SINGLE CEE COLUMN BYPASS CORNER**

LEFT HAND DETAIL SHOWN, RIGHT HAND OPPOSITE  
NOTE: USE (12) 1/2" X 1 1/4" A307 BOLTS H0500 / NUTS H0400.  
REFERENCE ERECTOR NOTE FOR TYPICAL WASHER REQUIREMENTS

**CF0015**

Detailer Notes:

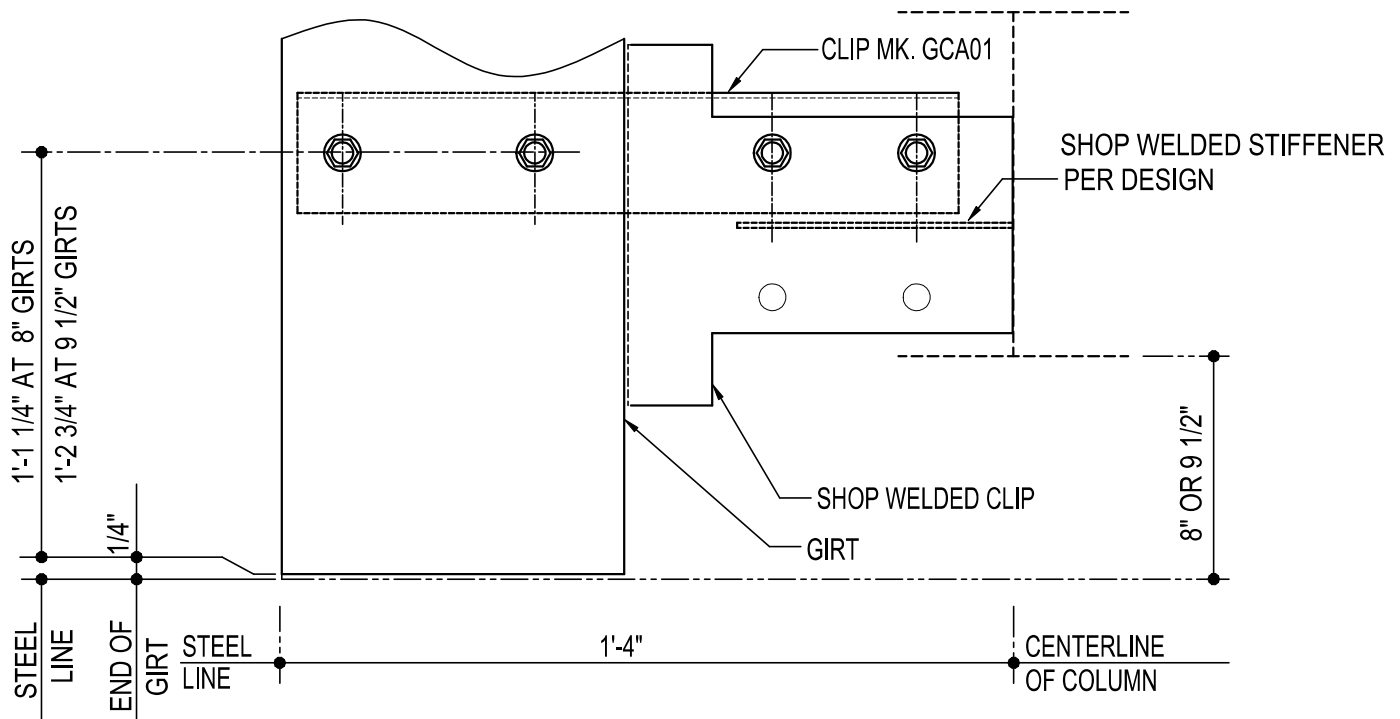
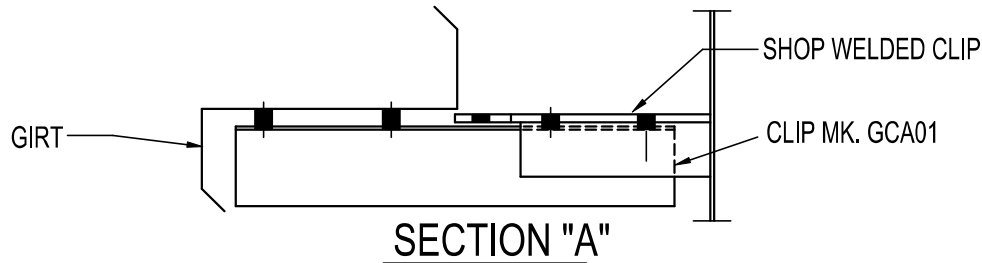
- 1) N/A

CF0250 - GIRT TERMINATION DETAIL

[Download the DWG file by clicking here.](#)

**ERECTOR NOTE**

GIRT CLIPS ARE FACTORY PUNCHED TO BE USED WITH MULTIPLE GIRT DEPTHS. REFER TO THE STANDARD BOLT PLACEMENT DETAIL(S) FOR PROPER BOLT PLACEMENT.



**GIRT TERMINATION DETAIL**

NOTE: USE (4) 1/2" x 1 1/4" A307 BOLTS H0500/NUTS H0400  
REFERENCE STANDARD WASHER DETAIL FOR TYPICAL WASHER REQUIREMENTS

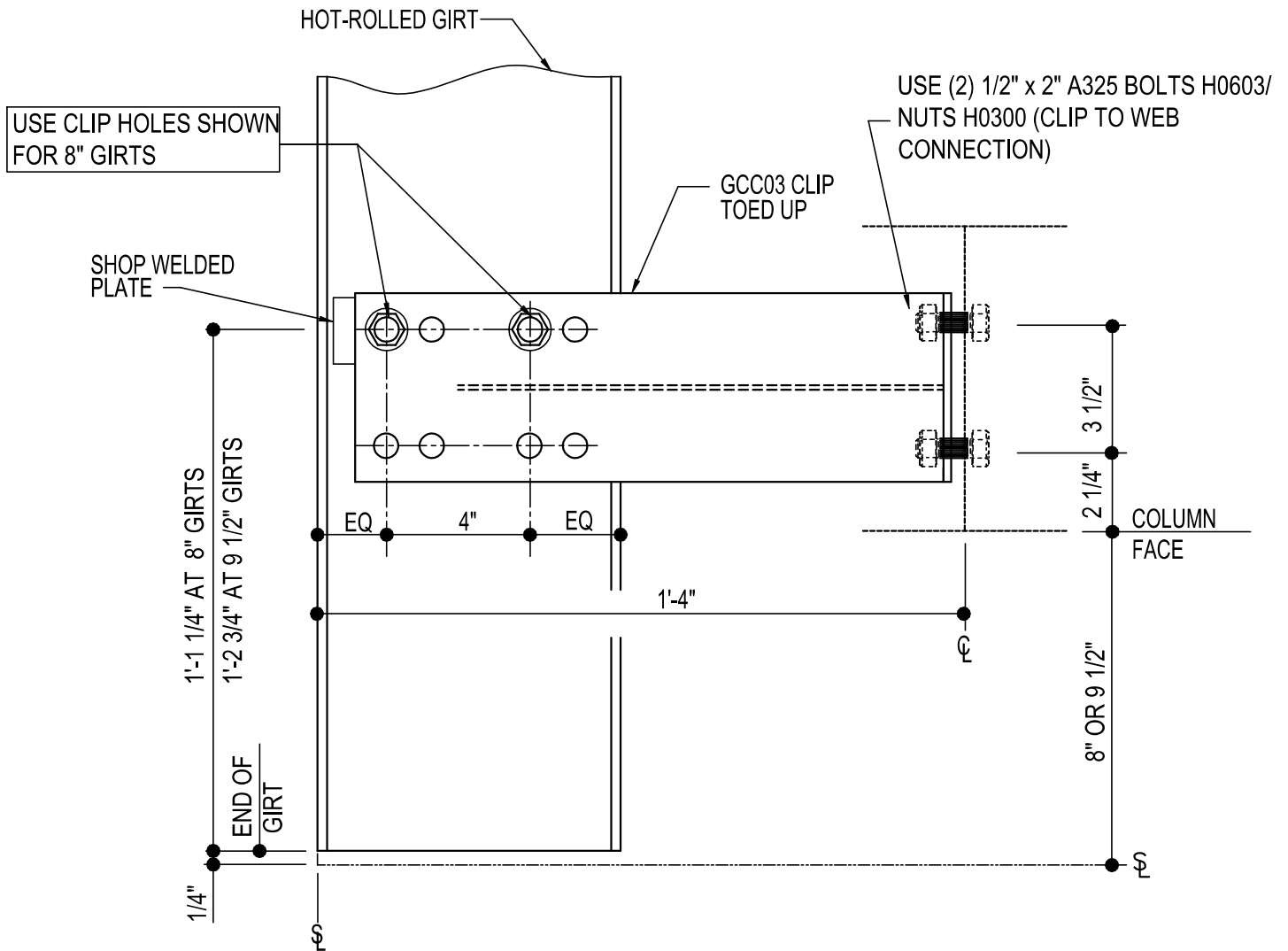
**CF0250**

Detailer Notes:

- 1) WELDED CLIP TO COLUMN : GF102
- 2) ADD STIFFENER PER DESIGN: WS\_04

CF0256 - H.R. GIRT TERMINATION DETAIL

[Download the DWG file by clicking here.](#)



**HOT-ROLLED GIRT TERMINATION DETAIL**

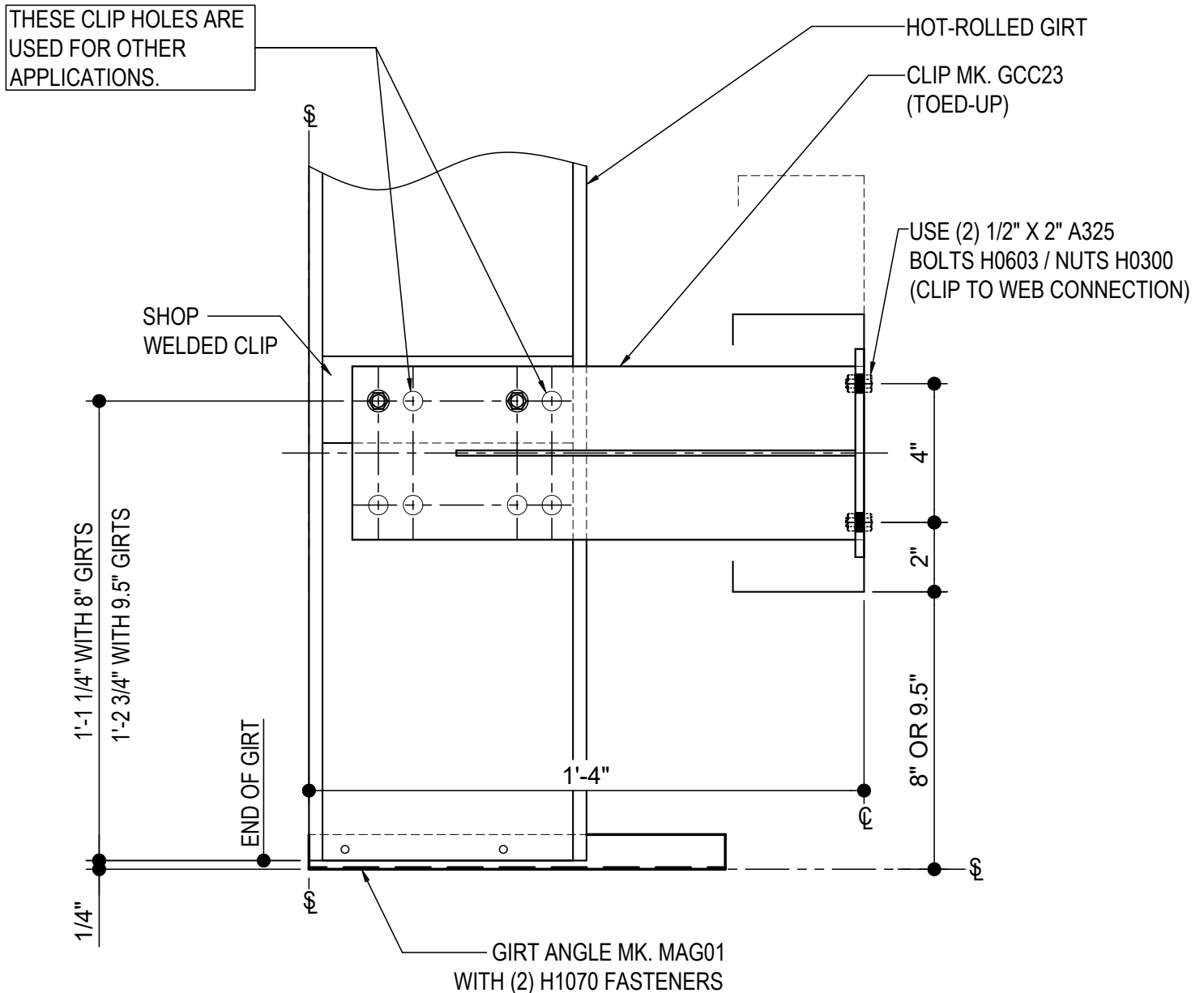
LEFT HAND DETAIL SHOWN, RIGHT HAND OPPOSITE  
NOTE: USE (2) 1/2" x 2" A325 BOLTS (H0603) & NUTS (H0300)  
REFERENCE ERECTOR NOTE FOR TYPICAL WASHER REQUIREMENTS

**CF0256**

- Detailer Notes:**
- 1) WELDED CLIP TO HR GIRT : HCS08
  - 2) DETAIL IS FOR BU/HR COLUMN ONLY.

CF0257 - HOT-ROLLED GIRT TERMINATION @ C.F. COL.

[Download the DWG file by clicking here.](#)



**HOT-ROLLED GIRT TERMINATION @ C.F. COL.**

LEFT HAND DETAIL SHOWN. RIGHT HAND OPPOSITE

NOTE: USE (2) 1/2" X 2" A325 BOLTS (H0603) & NUTS (H0300)

REFERENCE ERECTOR NOTE FOR TYPICAL WASHER REQUIREMENTS

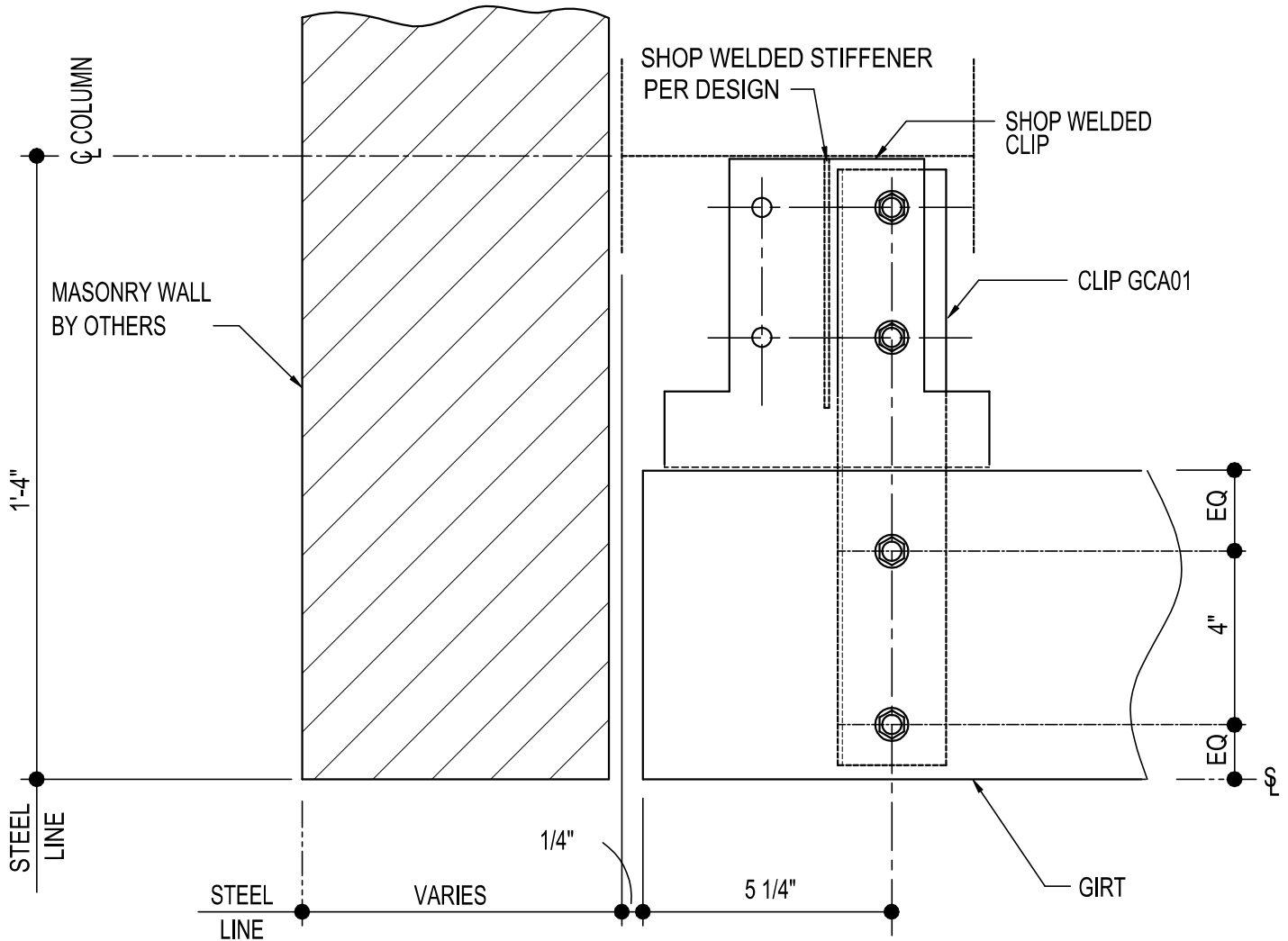
**CF0257**

Detailer Notes:

- 1) THIS DETAIL IS FOR COLD FORMED COLUMN CONDITIONS ONLY.
- 2) THE SHOP WELDED CLIP SHOWN IN THE DETAIL, IS A HCS08..

CF0275 - GIRT TERMINATION @ MASONRY WALL DETAIL

[Download the DWG file by clicking here.](#)



## GIRT TERMINATION DETAIL

LEFT HAND DETAIL SHOWN, RIGHT HAND OPPOSITE

NOTE: USE (4) 1/2" x 1 1/4" A307 BOLTS H0500/NUTS H0400

REFERENCE STANDARD WASHER DETAIL FOR TYPICAL WASHER REQUIREMENTS

**CF0275**

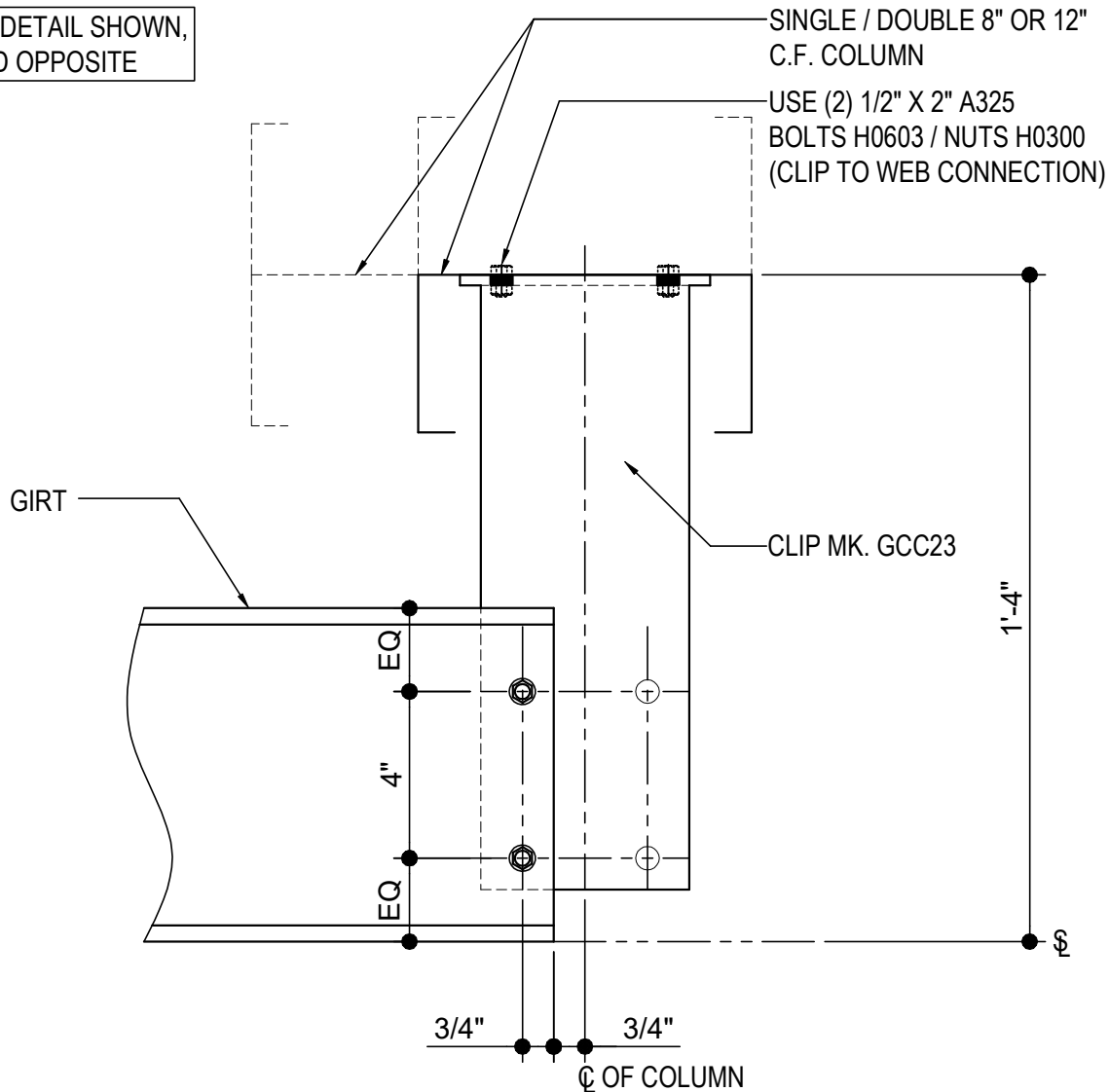
Detailer Notes:

- 1) WELDED CLIP : GFI02
- 2) ADD STIFFENER PER DESIGN: WS\_04

CF0351 - SIMPLE SPAN GIRT TERMINATION @ C.F. COL.

[Download the DWG file by clicking here.](#)

LEFT HAND DETAIL SHOWN,  
RIGHT HAND OPPOSITE



## SIMPLE SPAN GIRT TERMINATION @ C.F. COL.

SIMPLE-SPAN GIRT TERMINATION AT INTERIOR COLUMN

NOTE: USE (2) 1/2" X 1 1/4" A307 BOLTS (H0500) & NUTS (H0400)

REFERENCE ERECTOR NOTE FOR TYPICAL WASHER REQUIREMENTS

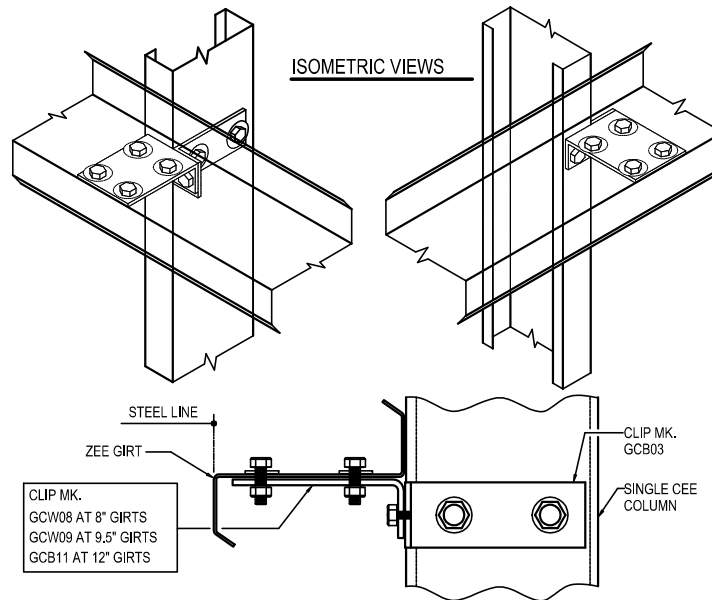
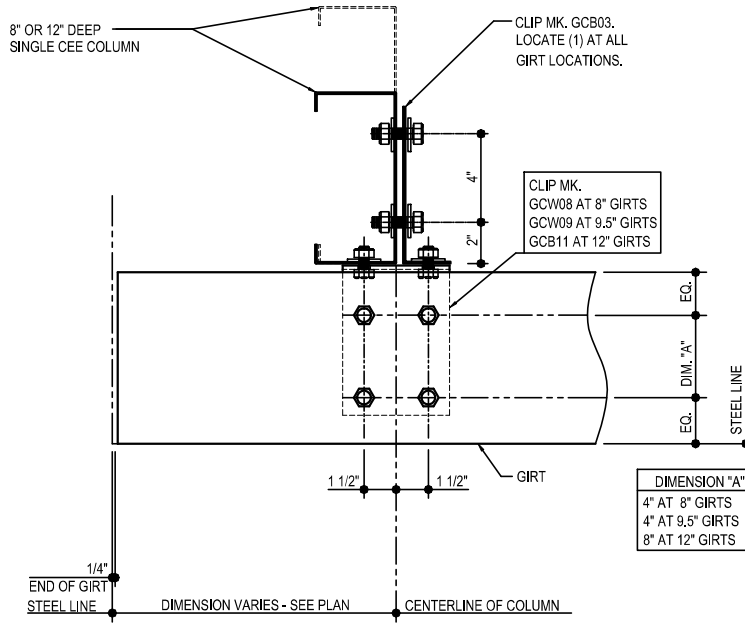
**CF0351**

Detailer Notes:

- 1) THIS DETAIL IS FOR COLD FORMED COLUMN CONDITIONS ONLY.

CF0360 - BYPASS GIRT AT CF CORNER COL.

[Download the DWG file by clicking here.](#)



**BYPASS GIRT AT CF CORNER COL.**

LEFT HAND DETAIL SHOWN, RIGHT HAND OPPOSITE  
NOTE: USE (8) 1/2" X 1 1/4" A307 BOLTS H0500 / NUTS H0400.  
REFERENCE ERECTOR NOTE FOR TYPICAL WASHER REQUIREMENTS

**CF0360**

**Detailer Notes:**

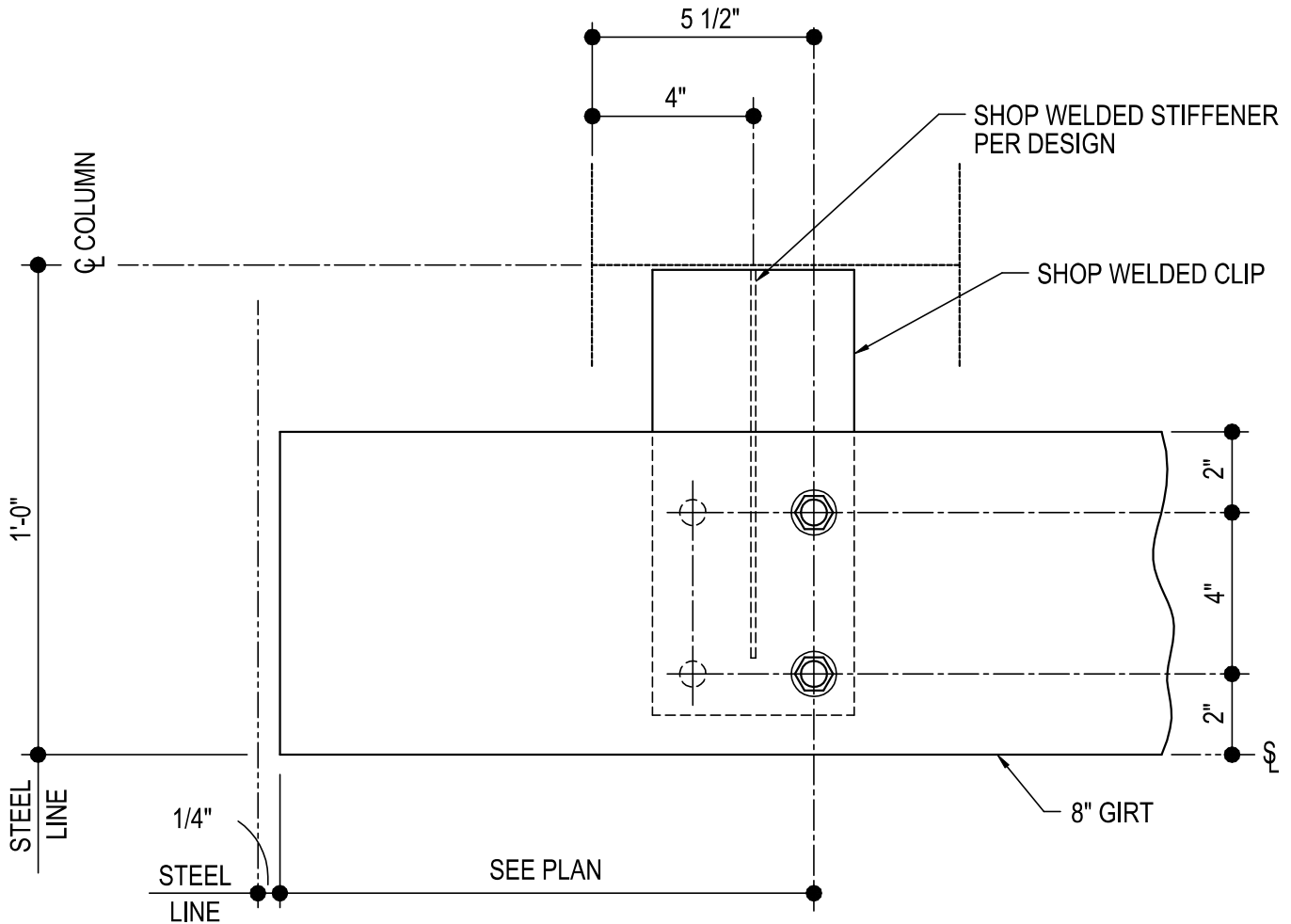
- 1) N/A



CF0500 - 8" GIRT TERMINATION DETAIL

[Download the DWG file by clicking here.](#)

LEFT HAND DETAIL SHOWN,  
RIGHT HAND OPPOSITE



**8" GIRT TERMINATION DETAIL**

NOTE: USE (2) 1/2"x 1 1/4" A307 BOLTS H0500/NUTS H0400  
REFERENCE ERECTOR NOTE FOR TYPICAL WASHER REQUIREMENTS

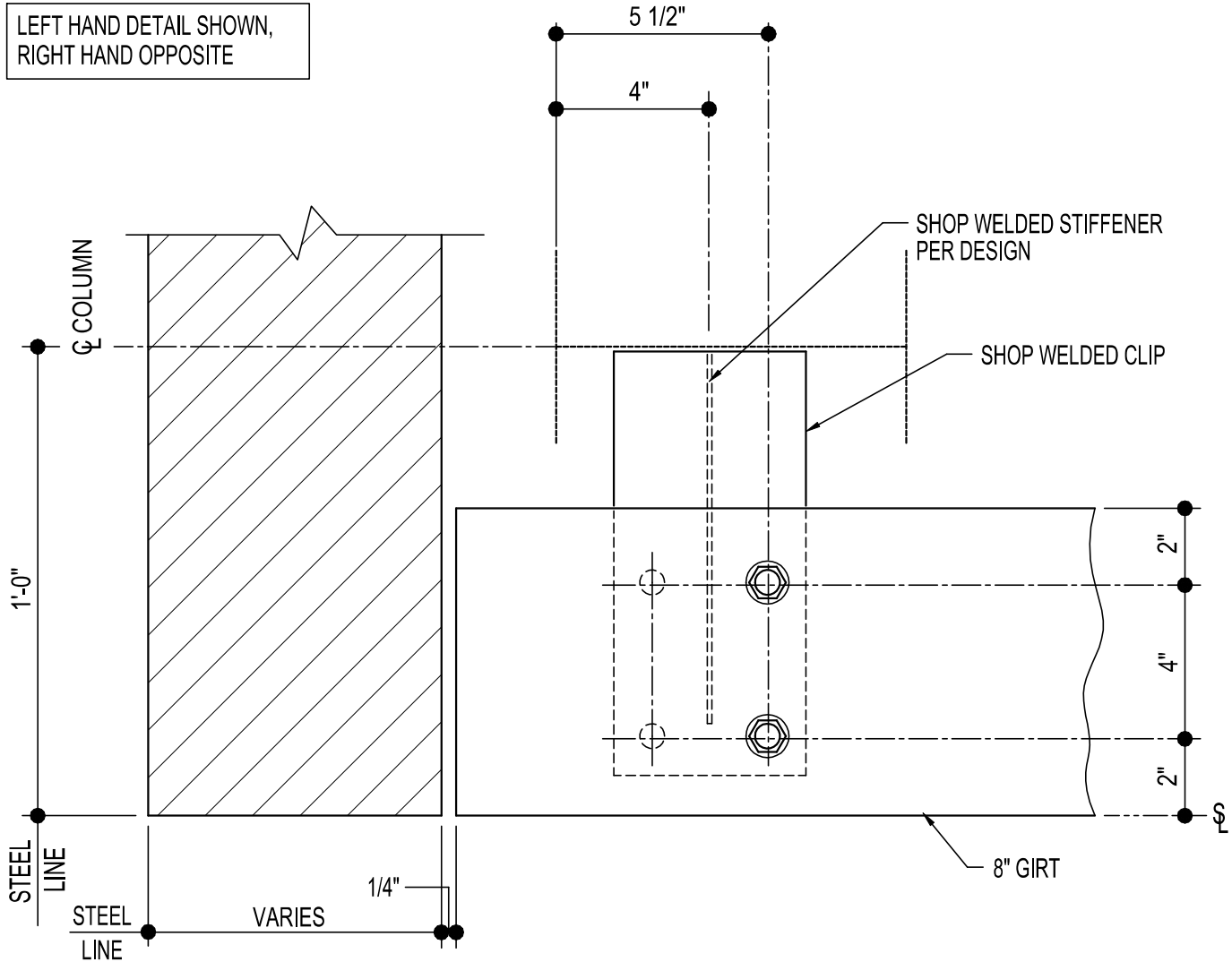
**CF0500**

Detailer Notes:

- 1) WELDED CLIP: GRC01
- 2) ADD STIFFENER PER DESIGN: WS\_12

CF0510 - 8" GIRT TERMINATION @ MASONRY WALL DETAIL

[Download the DWG file by clicking here.](#)



**8" GIRT TERMINATION DETAIL**

NOTE: USE (2) 1/2" x 1 1/4" A307 BOLTS H0500/NUTS H0400  
REFERENCE STANDARD WASHER DETAIL FOR TYPICAL WASHER REQUIREMENTS

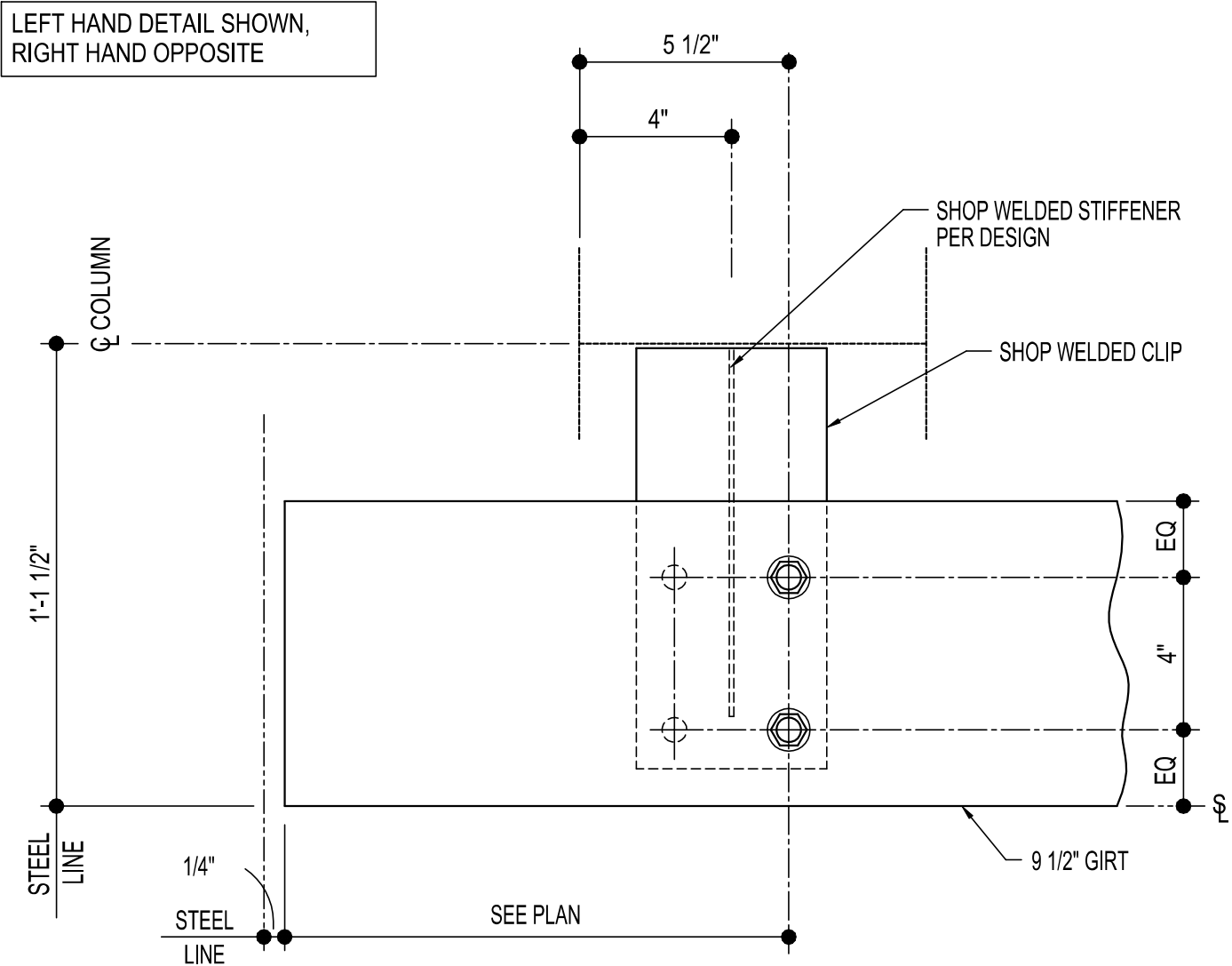
**CF0510**

Detailer Notes:

- 1) WELDED CLIP: GRC01
- 2) ADD STIFFENER PER DESIGN: WS\_12

CF0520 - 9 1/2" GIRT TERMINATION DETAIL

[Download the DWG file by clicking here.](#)



## 9 1/2" GIRT TERMINATION DETAIL

NOTE: USE (2) 1/2"x 1 1/4" A307 BOLTS H0500/NUTS H0400  
REFERENCE ERECTOR NOTE FOR TYPICAL WASHER REQUIREMENTS

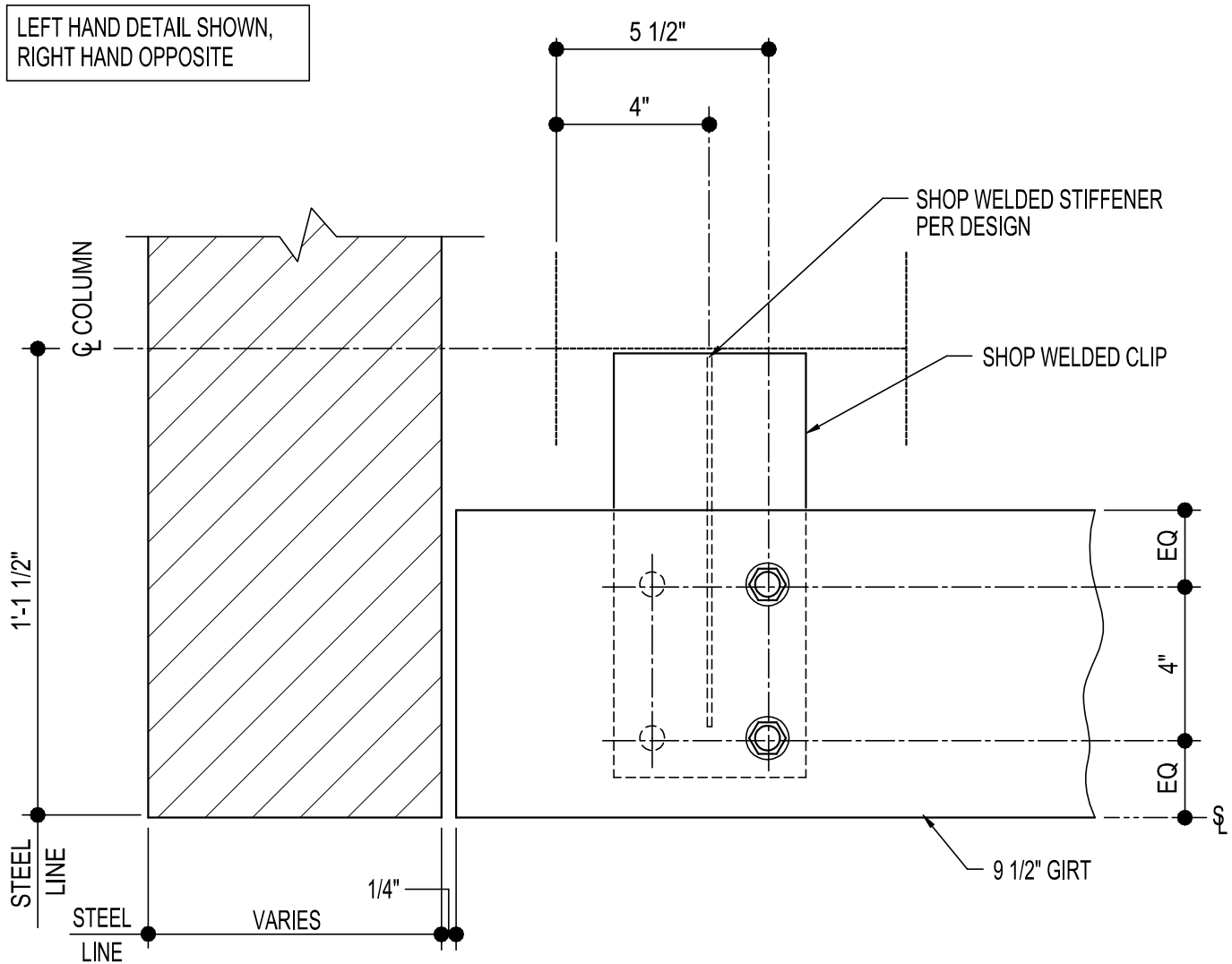
CF0520

Detailer Notes:

- 1) WELDED CLIP: GRC02
- 2) ADD STIFFENER PER DESIGN: WS\_12

CF0530 - 9 1/2" GIRT TERMINATION @ MASONRY WALL DETAIL

[Download the DWG file by clicking here.](#)



## 9 1/2" GIRT TERMINATION DETAIL

NOTE: USE (2) 1/2" x 1 1/4" A307 BOLTS H0500/NUTS H0400  
REFERENCE STANDARD WASHER DETAIL FOR TYPICAL WASHER  
REQUIREMENTS

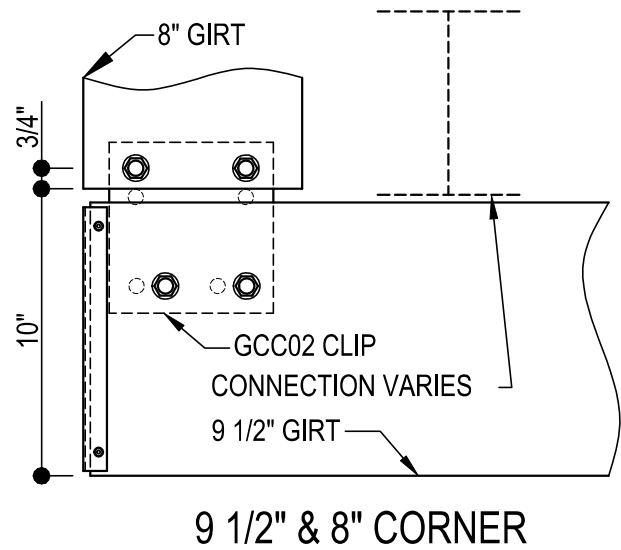
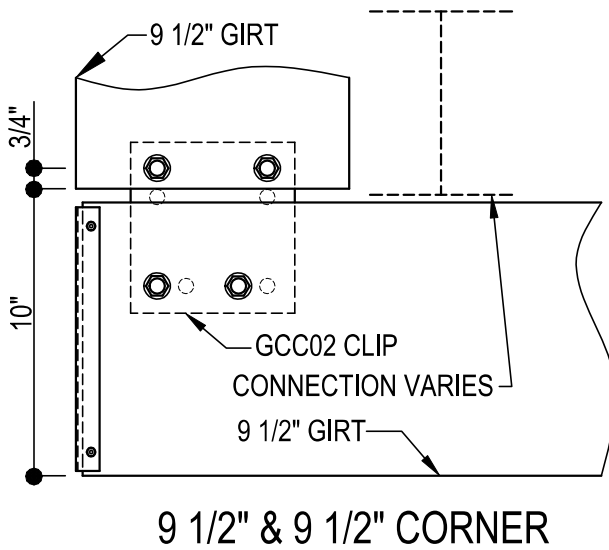
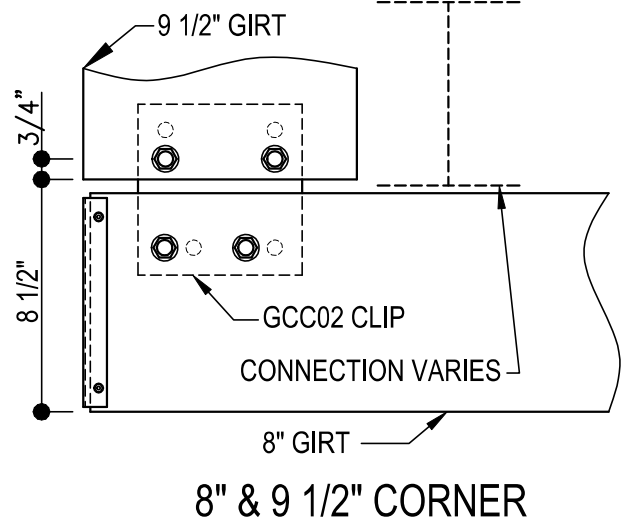
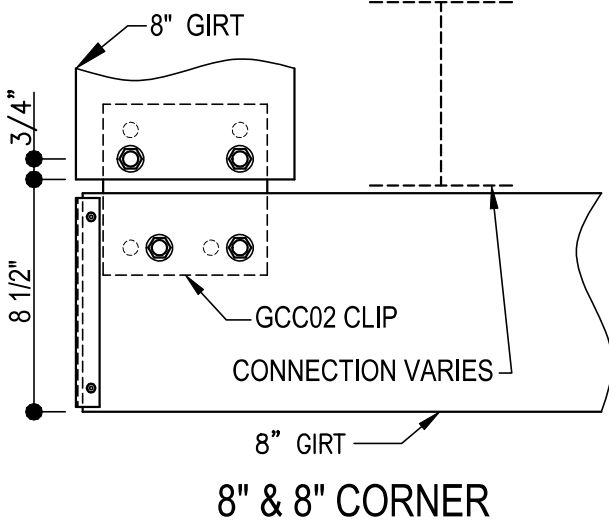
**CF0530**

Detailer Notes:

- 1) WELDED CLIP: GRC02
- 2) ADD STIFFENER PER DESIGN: WS\_12

CF1001 - BOLT PLACEMENT DETAIL

[Download the DWG file by clicking here.](#)



**BYPASS GIRT BOLT PLACEMENT DETAIL**

REFERENCE WASHER DETAIL FOR TYPICAL WASHER REQUIREMENTS  
GIRT CLIPS ARE FACTORY PUNCHED TO BE USED WITH MULTIPLE GIRT DEPTHS.  
REFER TO THE DETAILS ABOVE TO DETERMINE WHICH HOLES ARE UTILIZED.

**CF1001**

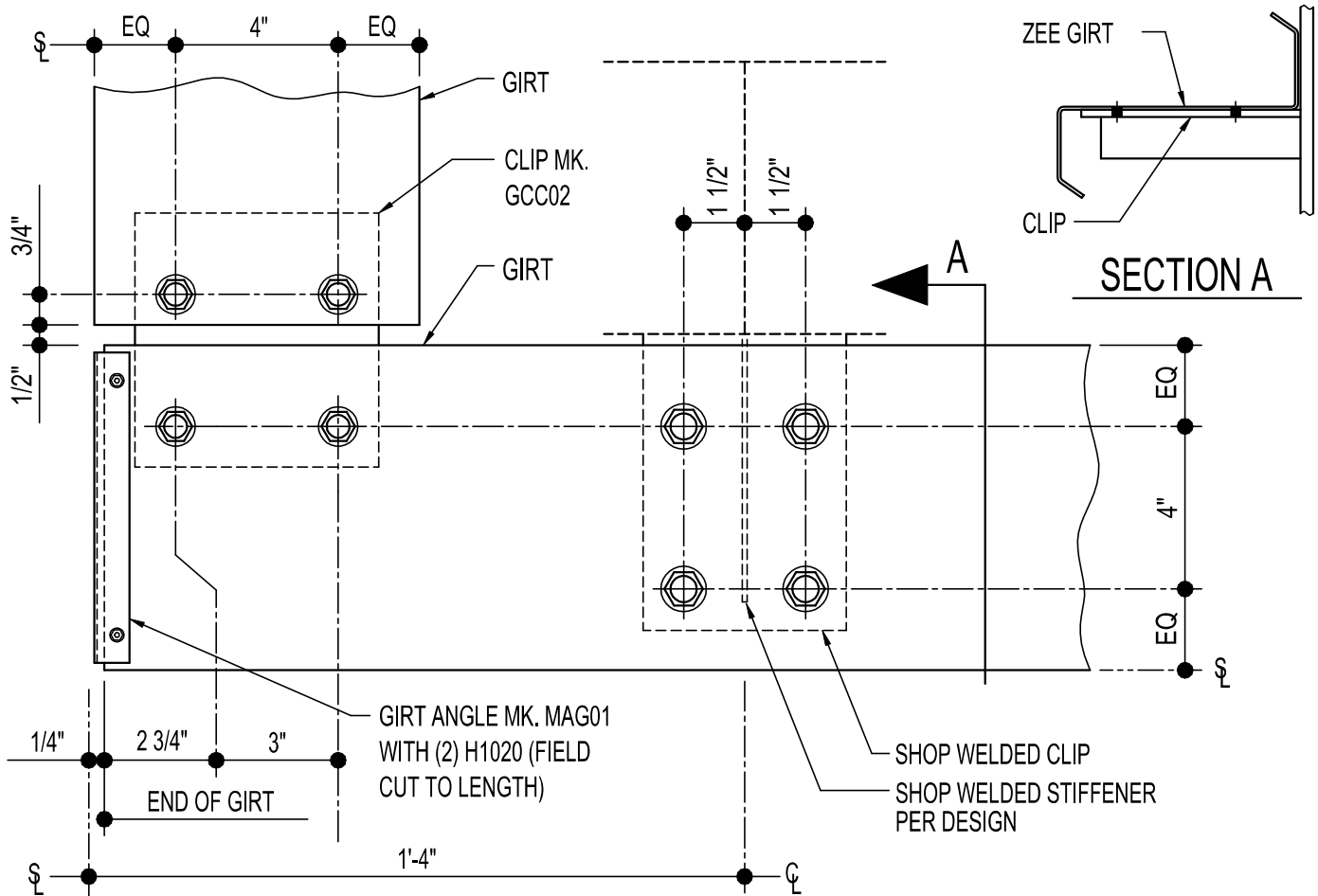
Detailer Notes: 1) N/A

CF1010 - BYPASS CORNER GIRT DETAIL

[Download the DWG file by clicking here.](#)

**ERECTOR NOTE**

GIRT CLIPS ARE FACTORY PUNCHED TO BE USED WITH MULTIPLE GIRT DEPTHS. REFER TO THE STANDARD BOLT PLACMENT DETAIL(S) FOR PROPER BOLT PLACEMENT.



**BYPASS GIRT CORNER DETAIL**

LEFT HAND DETAIL SHOWN, RIGHT HAND OPPOSITE

NOTE: USE (8) 1/2" x 1 1/4" A307 BOLTS H0500/NUTS H0400

REFERENCE STANDARD WASHER DETAIL FOR TYPICAL WASHER

REQUIREMENTS

**CF1010**

Detailer Notes:

- 1) (4) HOLE WELDED CLIP:  
8" - PCU01  
9 1/2" - GCB62  
12" - GCB12

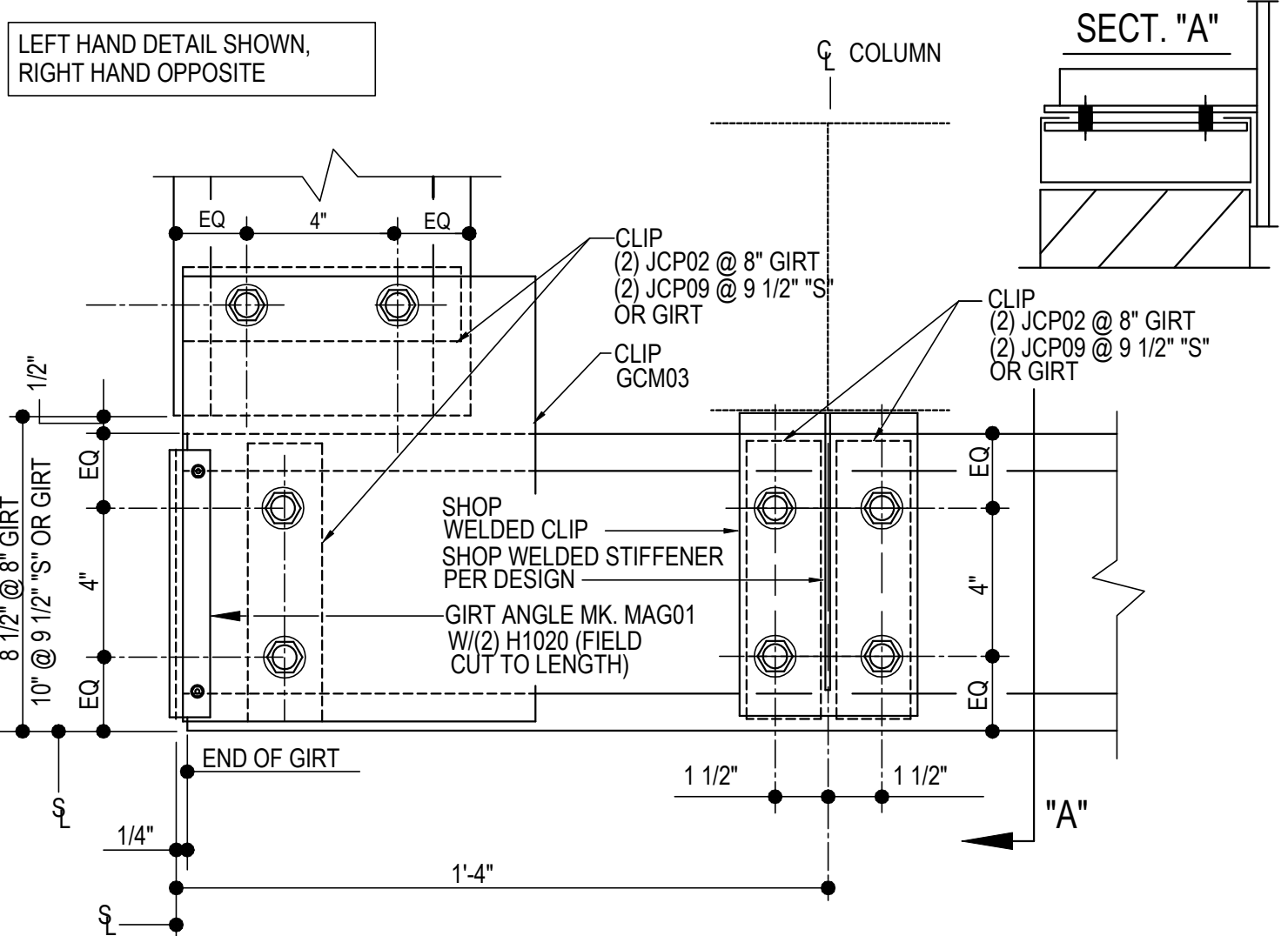
- 2) ADD STIFFENER PER DESIGN:  
8" GIRT: WS\_04  
9 1/2" GIRT: WS\_04  
12" GIRT: WS\_12

CF1020 - BYPASS CORNER CEE GIRT DETAIL

[Download the DWG file by clicking here.](#)

**ERECTOR NOTE**

GIRT CLIPS ARE FACTORY PUNCHED TO BE USED WITH MULTIPLE GIRT DEPTHS. REFER TO THE STANDARD BOLT PLACMENT DETAIL(S) FOR PROPER BOLT PLACEMENT.



**CORNER CEE-GIRT AT MASONRY DETAIL**

NOTE: USE (8) 1/2"X 1 1/4" A307 BOLTS H0500/NUTS H0400  
REFERENCE ERECTOR NOTE FOR TYPICAL WASHER REQUIREMENTS

**CF1020**

Detailer Notes:

- 1) (4) HOLE WELDED CLIP:  
8" - GCM04  
9 1/2" - GCM95
- 2) ADD STIFFENER PER DESIGN: WS\_04

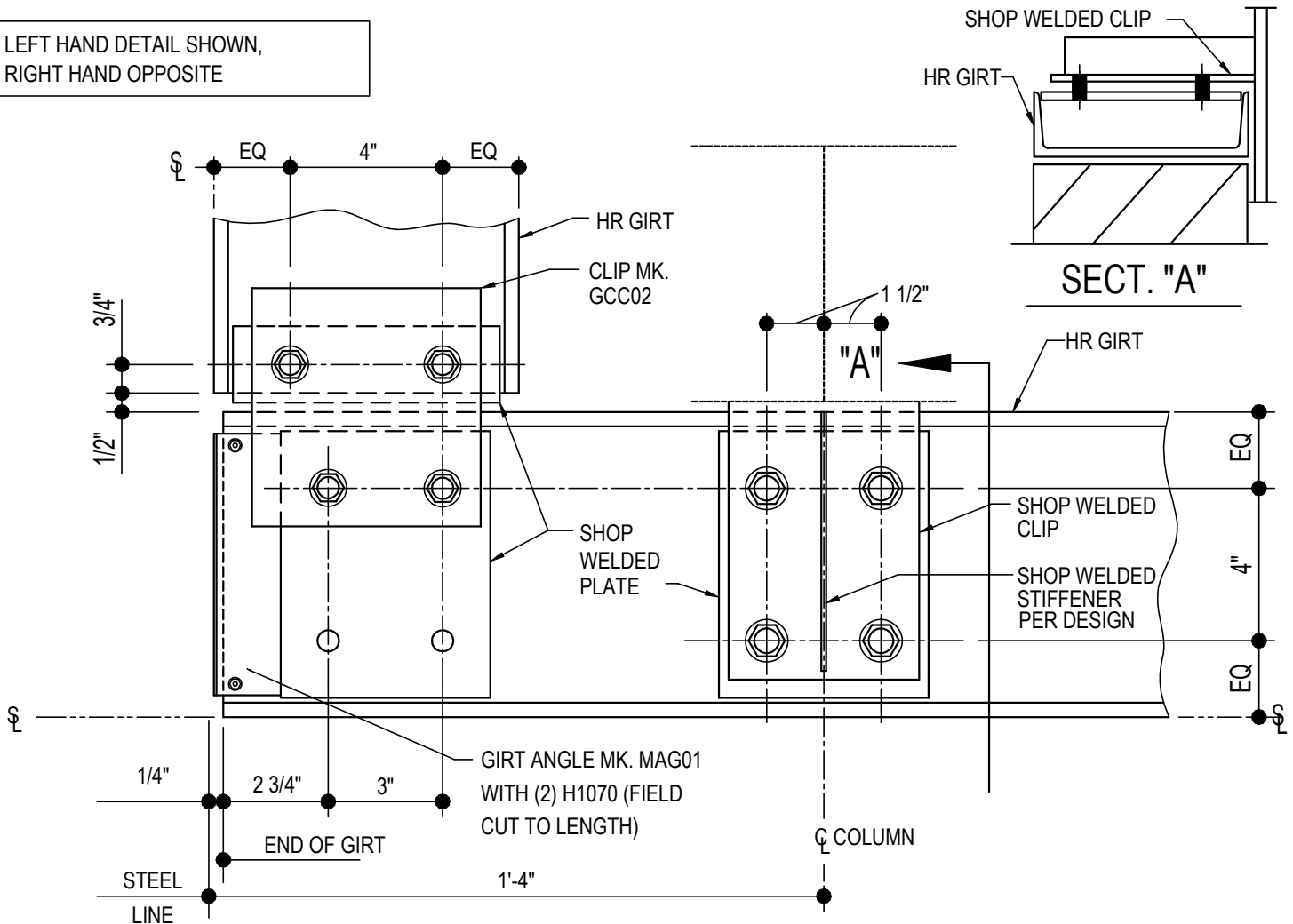
CF1060 - BYPASS CORNER HR GIRT DETAIL

[Download the DWG file by clicking here.](#)

**ERECTOR NOTE**

GIRT CLIPS ARE FACTORY PUNCHED TO BE USED WITH MULTIPLE GIRT DEPTHS. REFER TO THE STANDARD BOLT PLACMENT DETAIL(S) FOR PROPER BOLT PLACEMENT.

LEFT HAND DETAIL SHOWN,  
RIGHT HAND OPPOSITE



**HOT-ROLLED CORNER GIRT DETAIL**

BYPASS HOT-ROLLED 8" CEE GIRTS AT CORNER

NOTE: USE (8) 1/2" x 2" A325 BOLTS (H0603) & NUTS (H0300)

REFERENCE STANDARD WASHER DETAIL FOR TYPICAL WASHER REQUIREMENTS

**CF1060**

- Detailer Notes:**
- 1) (4) HOLE WELDED CLIP TO COLUMN : GCM04
  - 2) (4) HOLE PLATE WELDED TO HR GIRT : HCD08
  - 3) (2) HOLE PLATE WELDED TO HR GIRT: HCS08
  - 4) ADD STIFFENER PER DESIGN: WS\_04

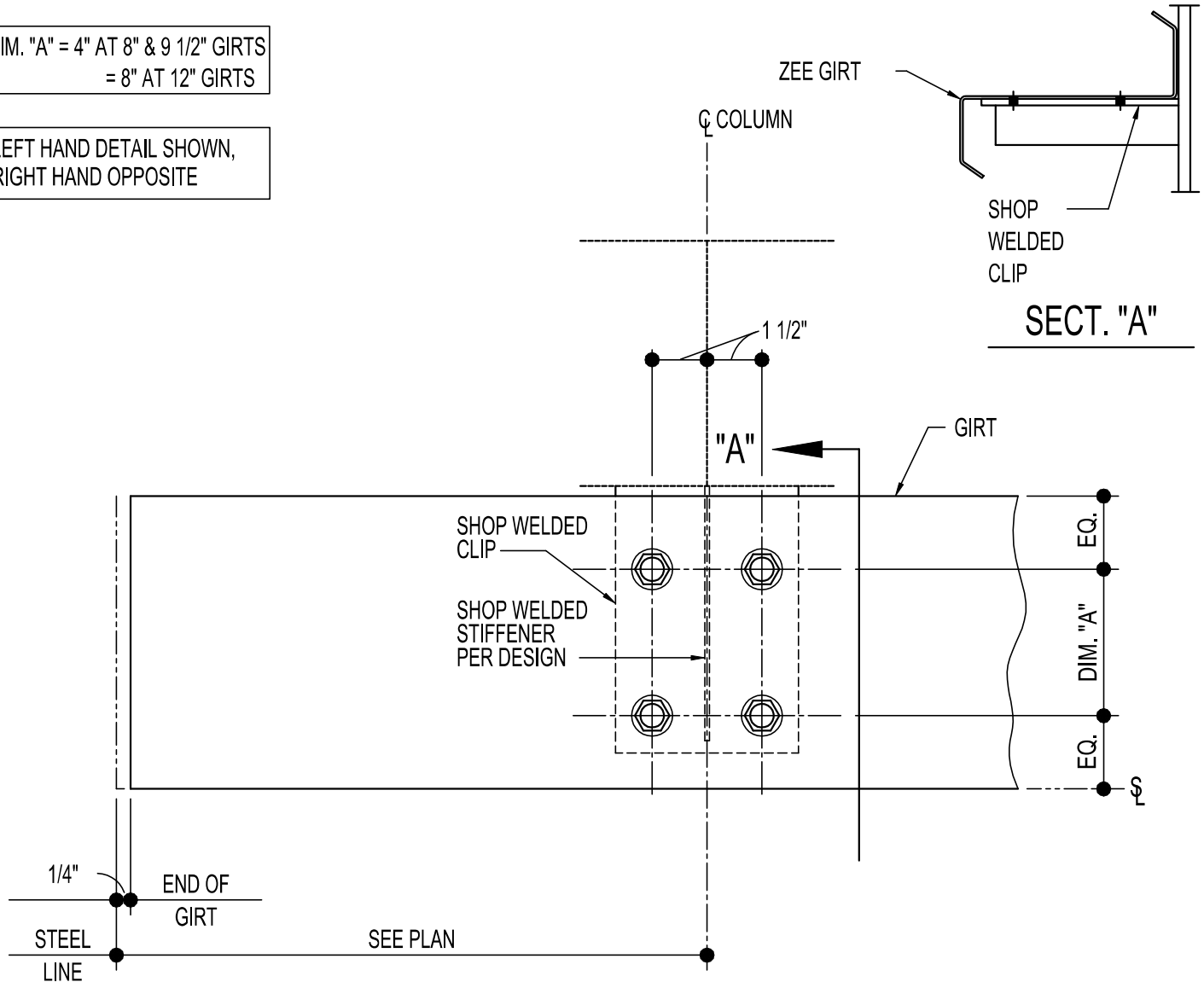


CF1200 - BYPASS CORNER GIRT TERMINATION DETAIL

[Download the DWG file by clicking here.](#)

DIM. "A" = 4" AT 8" & 9 1/2" GIRTS  
= 8" AT 12" GIRTS

LEFT HAND DETAIL SHOWN,  
RIGHT HAND OPPOSITE



**GIRT TERMINATION DETAIL**

LEFT HAND DETAIL SHOWN, RIGHT HAND OPPOSITE

NOTE: USE (4) 1/2" x 1 1/4" A307 BOLTS H0500/NUTS H0400

REFERENCE STANDARD WASHER DETAIL FOR TYPICAL WASHER REQUIREMENTS

**CF1200**

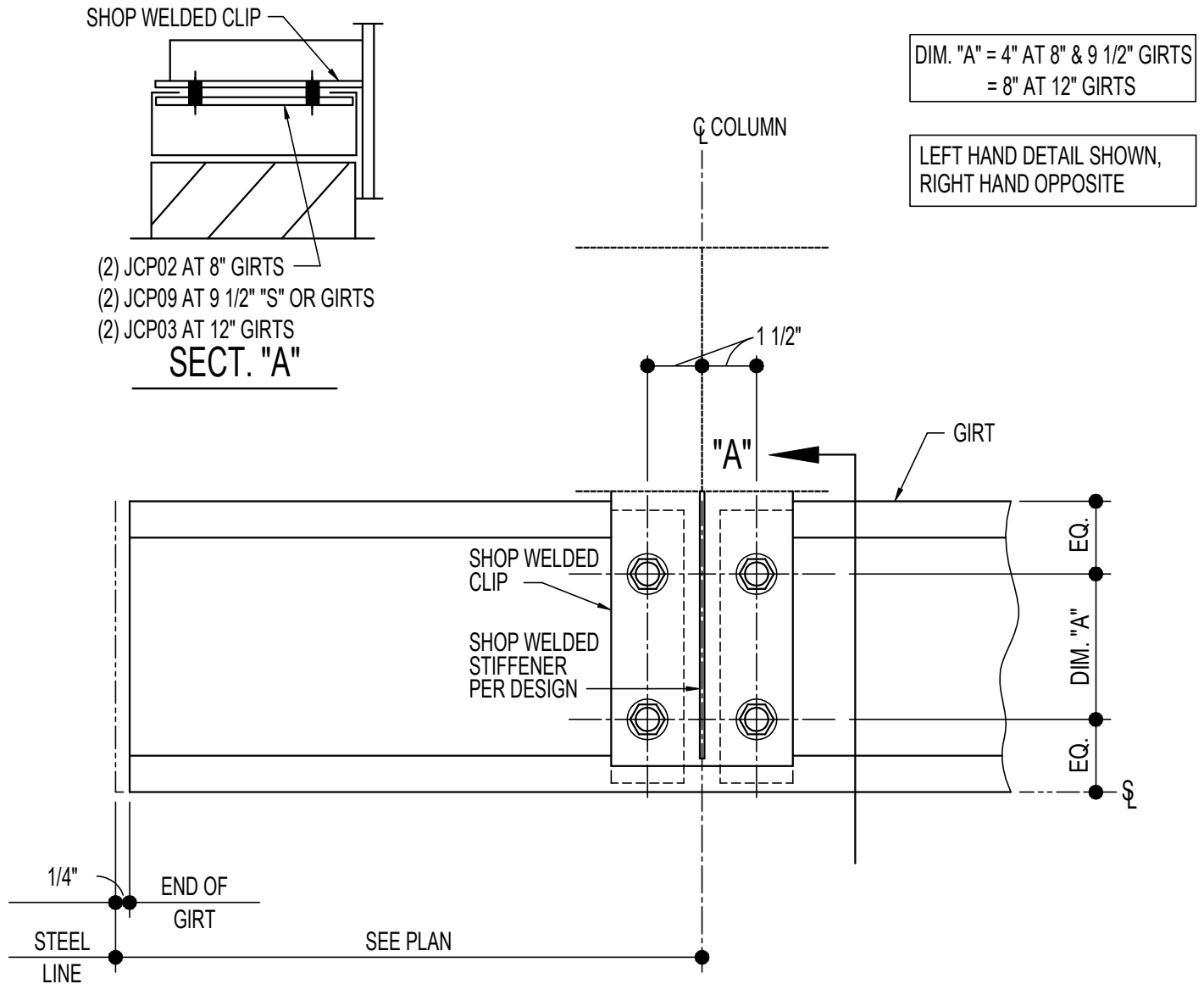
Detailer Notes:

- 1) (4) HOLE WELDED CLIP:  
8" - PCU01  
9 1/2" - GCB62  
12" - GCB12

- 2) ADD STIFFENER PER DESIGN:  
8" GIRT: WS\_04  
9 1/2" GIRT: WS\_04  
12" GIRT: WS\_12

CF1210 - BYPASS CORNER GIRT TERMINATION DETAIL

[Download the DWG file by clicking here.](#)



DIM. "A" = 4" AT 8" & 9 1/2" GIRTS  
= 8" AT 12" GIRTS

LEFT HAND DETAIL SHOWN,  
RIGHT HAND OPPOSITE

**GIRT TERMINATION DETAIL**

NOTE: USE (4) 1/2" x 1 1/4" A307 BOLTS H0500/NUTS H0400  
REFERENCE STANDARD WASHER DETAIL FOR TYPICAL WASHER  
REQUIREMENTS

**CF1210**

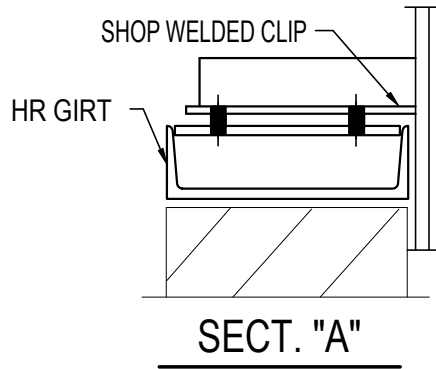
Detailer Notes:

- 1) (4) HOLE WELDED CLIP:  
8" - GCM04  
9 1/2" - GCM95  
12" - GCB12

- 2) ADD STIFFENER PER DESIGN:  
8" GIRT: WS\_04  
9 1/2" GIRT: WS\_04  
12" GIRT: WS\_12

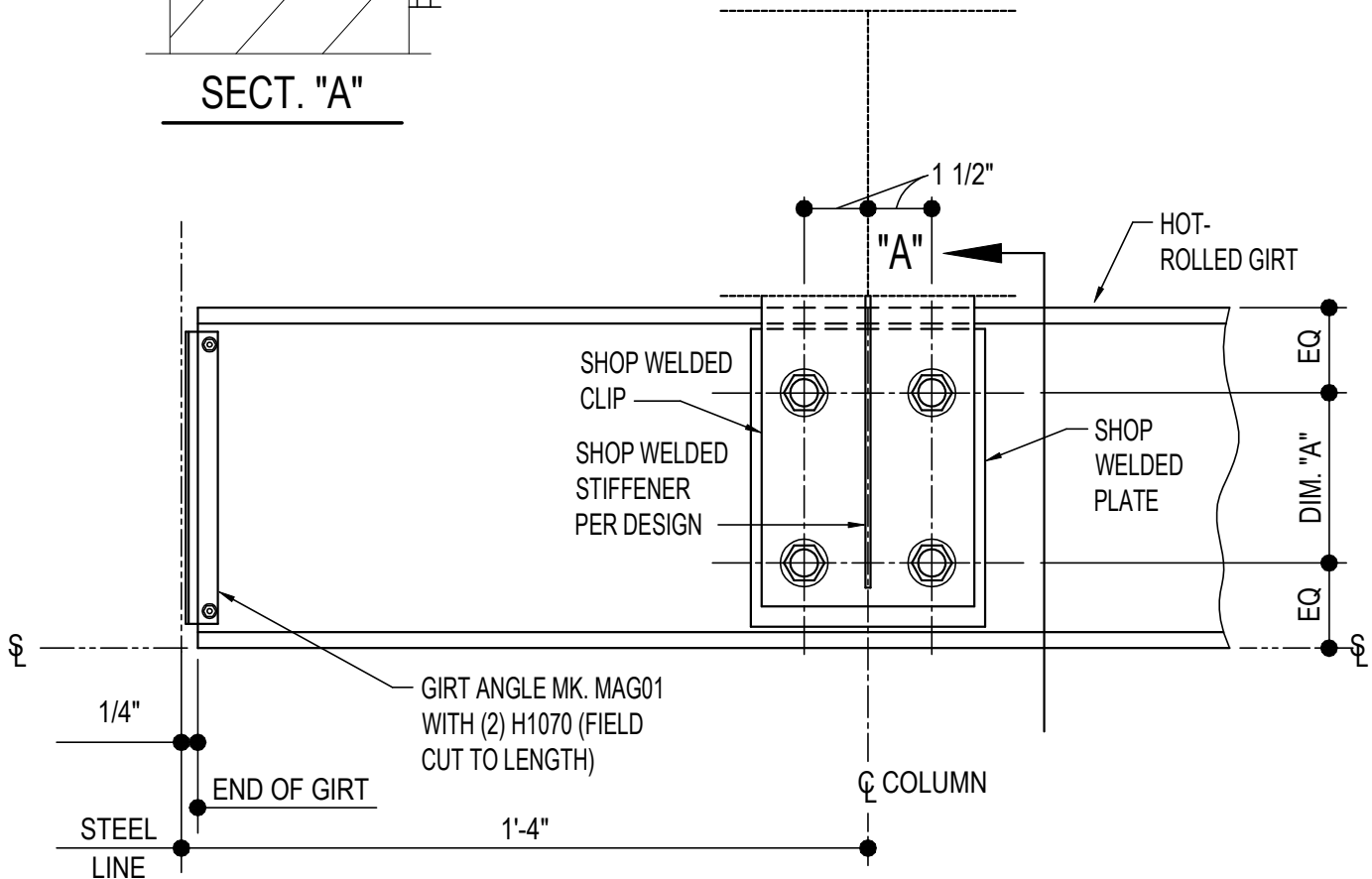
CF1220 - HR GIRT TERMINATION DETAIL

[Download the DWG file by clicking here.](#)



LEFT HAND DETAIL SHOWN  
RIGHT HAND OPPOSITE

DIM. "A" = 4" AT 8" GIRTS  
= 8" AT 12" GIRTS



**HOT-ROLLED GIRT TERMINATION DETAIL**

NOTE: USE (4) 1/2" x 2" A325 BOLTS (H0603) & NUTS (H0300)  
REFERENCE STANDARD WASHER DETAIL FOR TYPICAL WASHER REQUIREMENTS

**CF1220**

Detailer Notes:

- 1) (4) HOLE WELDED CLIP TO COLUMN :  
8" - PCU01  
12" - GCB12
- 2) (4) HOLE CLIP WELDED TO HR GIRT :  
8" - HCD08  
12" - HCD12

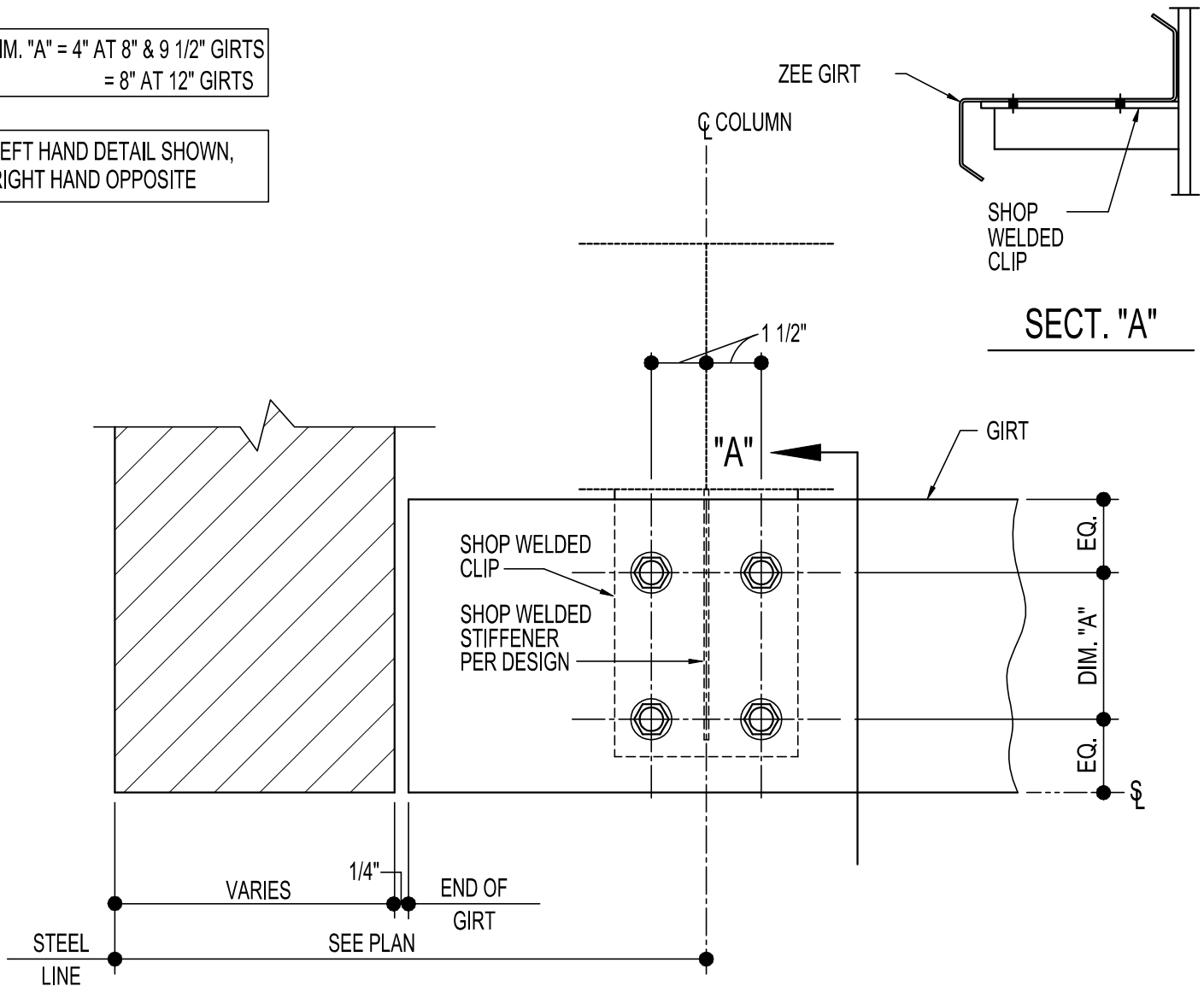
- 3) ADD STIFFENER PER DESIGN TO  
(4) HOLE WELDED CLIP TO COLUMN:  
8" GIRT: WS\_04  
12" GIRT: WS\_12

CF1260 - BYPASS CORNER GIRT TERMINATION @ MASONRY WALL DETAIL

[Download the DWG file by clicking here.](#)

DIM. "A" = 4" AT 8" & 9 1/2" GIRTS  
= 8" AT 12" GIRTS

LEFT HAND DETAIL SHOWN,  
RIGHT HAND OPPOSITE



**SECT. "A"**

**GIRT TERMINATION DETAIL**

NOTE: USE (4) 1/2" x 1 1/4" A307 BOLTS H0500/NUTS H0400  
REFERENCE STANDARD WASHER DETAIL FOR TYPICAL WASHER REQUIREMENTS

**CF1260**

Detailer Notes:

- 1) (4) HOLE WELDED CLIP:  
8" - PCU01  
9 1/2" - GCB62  
12" - GCB12

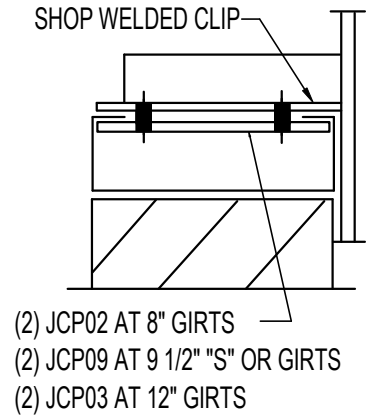
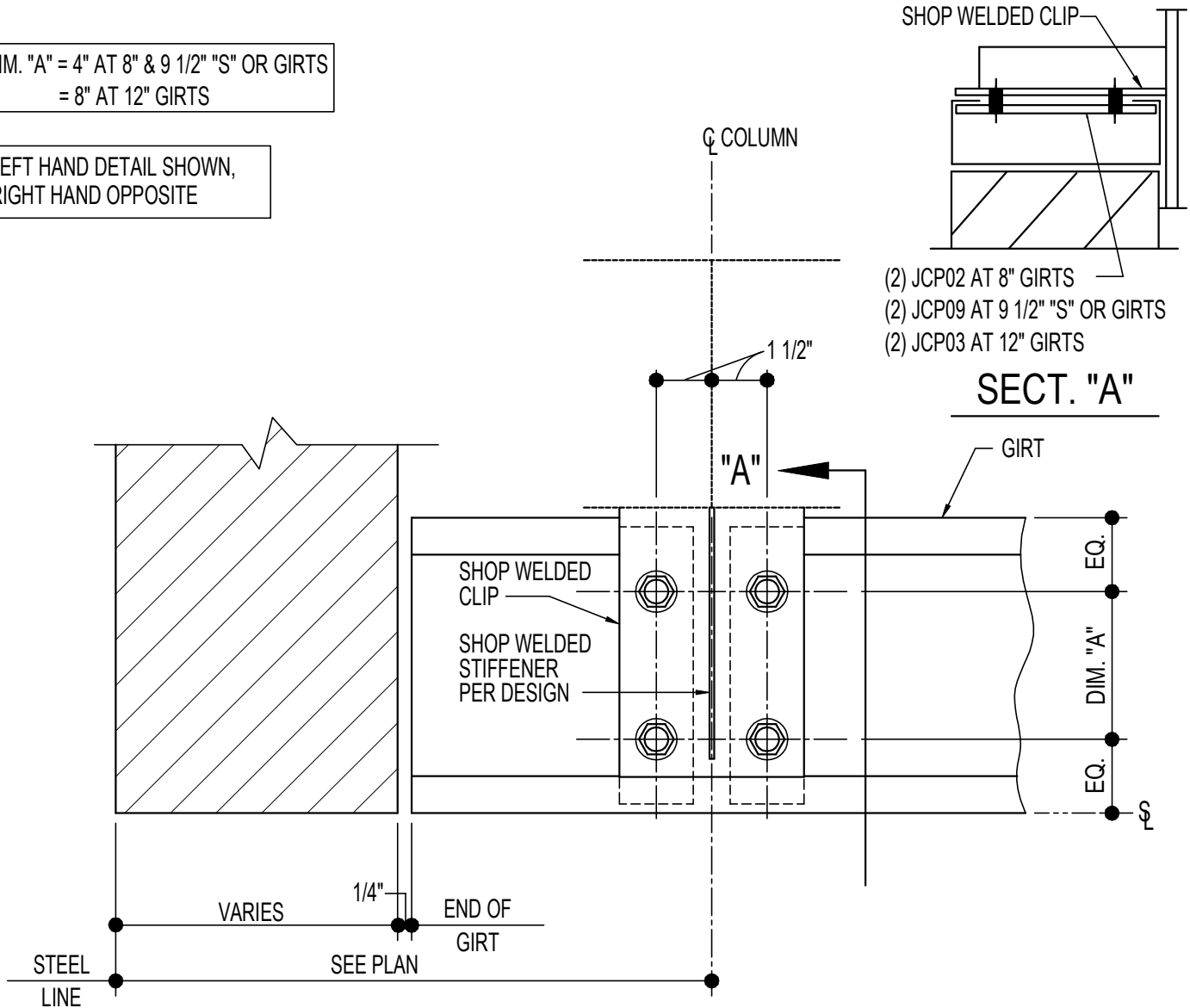
- 2) ADD STIFFENER PER DESIGN:  
8" GIRT: WS\_04  
9 1/2" GIRT: WS\_04  
12" GIRT: WS\_12

CF1270 - GIRT TERMINATION @ MASONRY WALL DETAIL

[Download the DWG file by clicking here.](#)

DIM. "A" = 4" AT 8" & 9 1/2" "S" OR GIRTS  
= 8" AT 12" GIRTS

LEFT HAND DETAIL SHOWN,  
RIGHT HAND OPPOSITE



**SECT. "A"**

**GIRT TERMINATION DETAIL**

NOTE: USE (4) 1/2" x 1 1/4" A307 BOLTS H0500/NUTS H0400  
REFERENCE STANDARD WASHER DETAIL FOR TYPICAL WASHER  
REQUIREMENTS

**CF1270**

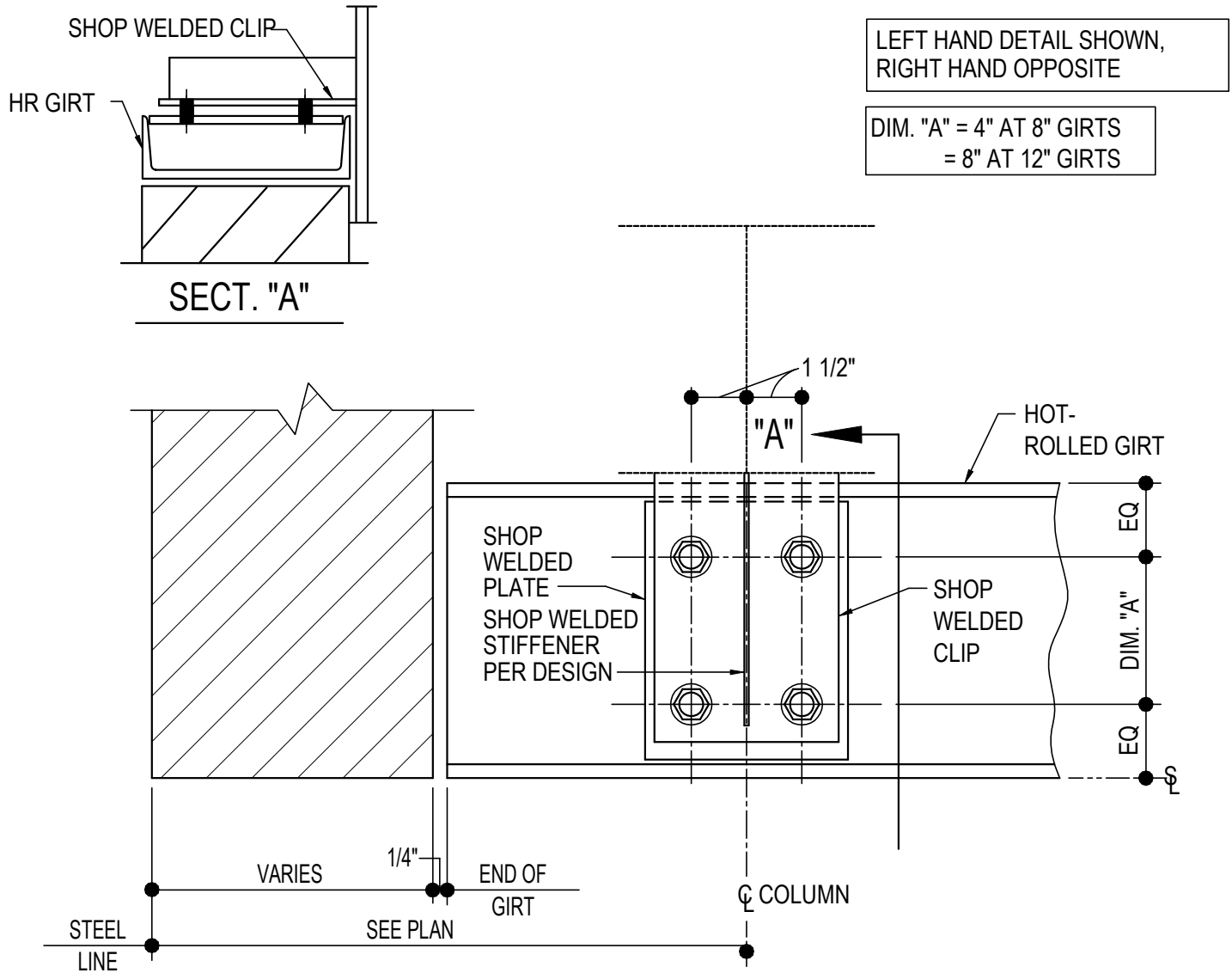
**Detailer Notes:**

- 1) (4) HOLE WELDED CLIP:  
8" - GCM04  
9 1/2" - GCM95  
12" - GCB12

- 2) ADD STIFFENER PER DESIGN:  
8" GIRT: WS\_04  
9 1/2" GIRT: WS\_04  
12" GIRT: WS\_12

CF1280 - HR GIRT TERMINATION @ MASONRY WALL DETAIL

[Download the DWG file by clicking here.](#)



## HOT-ROLLED GIRT TERMINATION DETAIL

NOTE: USE (4) 1/2" x 2" A325 BOLTS (H0603) & NUTS (H0300)  
REFERENCE STANDARD WASHER DETAIL FOR TYPICAL WASHER REQUIREMENTS

**CF1280**

**Detailer Notes:**

1) (4) HOLE WELDED CLIP TO COLUMN :  
8" - GCM04  
12" - GCB12

2) (4) HOLE PLATE WELDED TO HR GIRT :  
8" - HCD08  
12" - HCD12

3) ADD STIFFENER PER DESIGN TO  
(4) HOLE WELDED CLIP TO COLUMN:  
8" GIRT: WS\_04  
12" GIRT: WS\_12