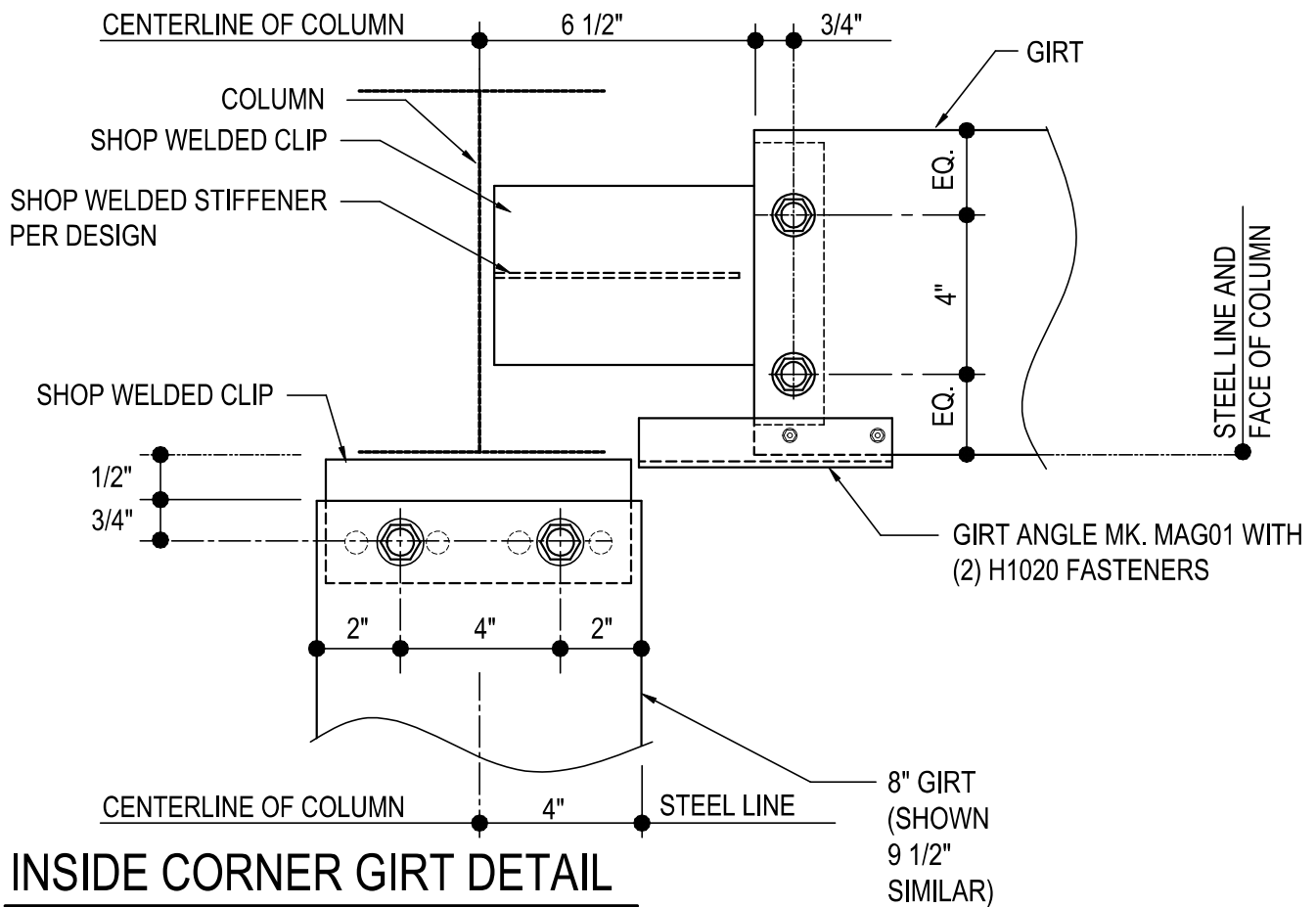
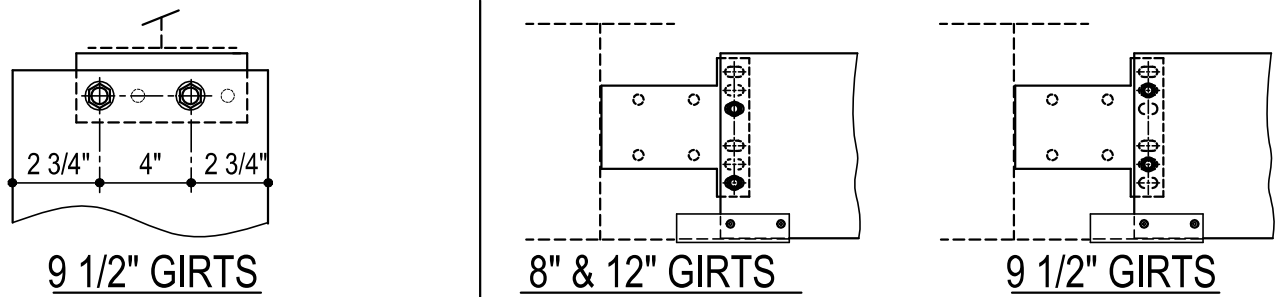


**INSIDE CORNER GIRT CONNECTIONS**

- CJ1010 - FLUSH FRAMELINE WITH FLUSH GIRTS
  - CJ1020 - FLUSH FRAMELINE WITH FLUSH & INSET GIRTS
  - CJ1030 - BYPASS FRAMELINE 1-0 FLUSH GIRT
  - CJ1040 - BYPASS FRAMELINE 1-1.5 FLUSH GIRT
  - CJ1050 - BYPASS FRAMELINE 1-4 FLUSH GIRT
  - CJ1060 - BYPASS FRAMELINE WITH 8 & 9.5 GIRT
  - CJ1070 - INSET FRAMELINE WITH 8 & 9.5 INSET GIRT
  - CJ1080 - BYPASS FRAMELINE 1-0 INSET GIRT
  - CJ1090 - BYPASS FRAMELINE 1-1.5 INSET GIRT
  - CJ1100 - BYPASS FRAMELINE 1-4 INSET GIRT
  - CJ1110 - FLUSH FRAMELINE SIMPLE SPAN BYPASS GIRT
  - CJ1120 - INSET FRAMELINE WITH SIMPLE SPAN BYPASS GIRT
  - CJ1130 - BYPASS FRAMELINE WITH SIMPLE SPAN BYPASS GIRT
  - CJ1165 - HOT ROLLED GIRT INTO BYPASS GIRT
  - CJ1170 - BYPASS GIRT INTO BYPASS GIRT
  - CJ1220 - BYPASS GIRT INTO BYPASS GIRT
  - CJ1500 - 8 LAPPED BYPASS GIRT AT 8 INSIDE GIRT
  - CJ1520 - 8 LAPPED BYPASS GIRT AT 8 INSIDE GIRT
  - CJ1540 - 9.5 LAPPED BYPASS GIRT INTO 8 INSIDE GIRT
  - CJ1560 - 9.5 LAPPED BYPASS GIRT INTO 9.5 INSIDE GIRT
-

CJ1010 - FLUSH FRAMELINE WITH FLUSH GIRTS

[Download the DWG file by clicking here.](#)



**INSIDE CORNER GIRT DETAIL**

FLUSH FRAMELINE WITH FLUSH GIRTS

REFERENCE STANDARD WASHER DETAIL FOR TYPICAL WASHER REQUIREMENTS

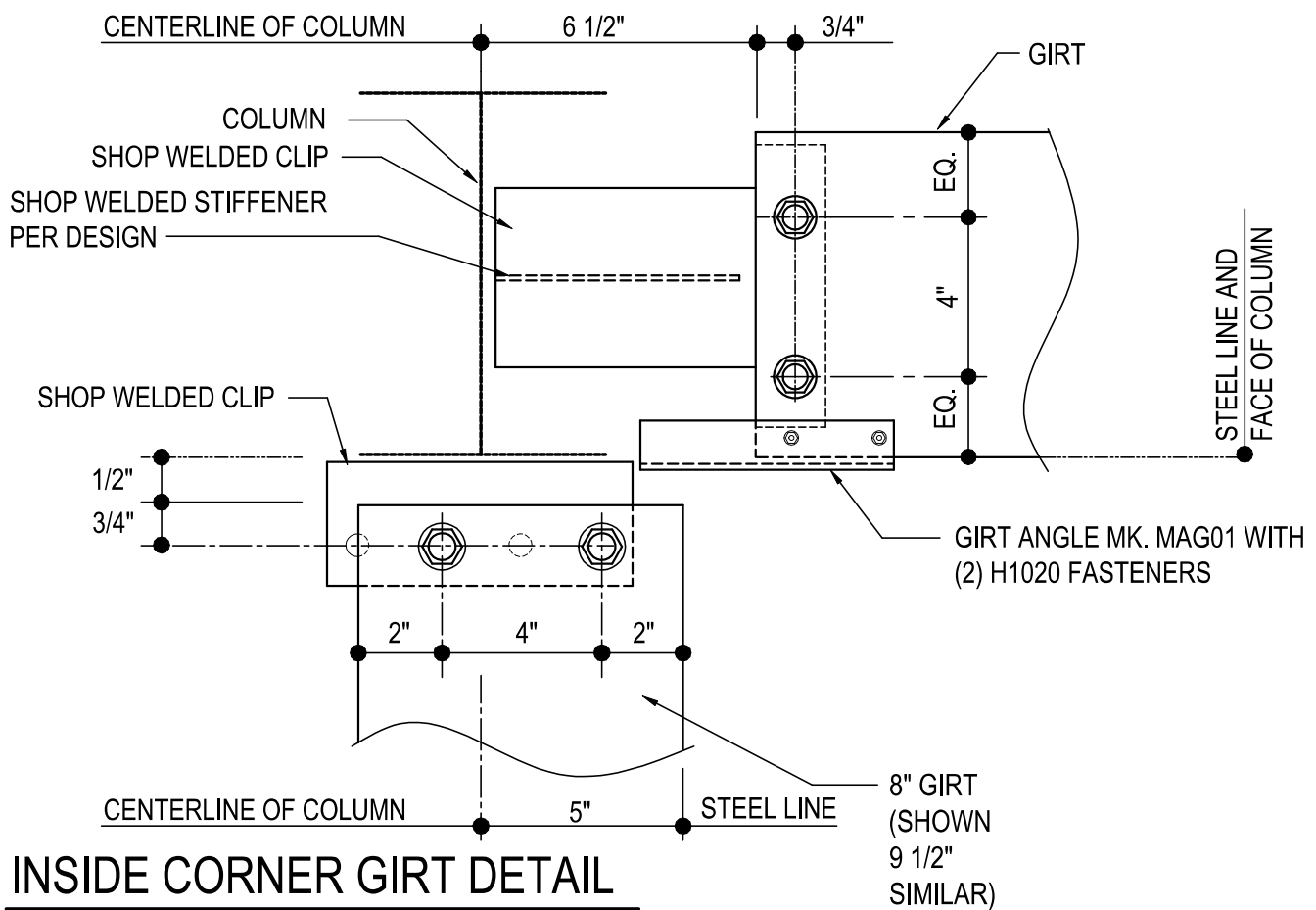
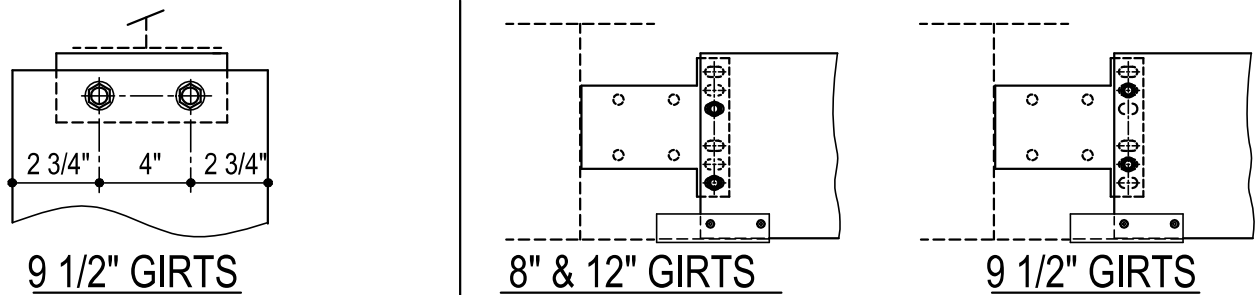
**CJ1010**

Detailer Notes:

- 1) WELDED "T" CLIP TO COLUMN: GFI02
- 2) (2) HOLE WELDED CLIP TO COLUMN FOR 8" GIRT: GRC03
- 3) (2) HOLE WELDED CLIP TO COLUMN FOR 9 1/2" GIRT: GRC09
- 4) ADD STIFFENER PER DESIGN TO WELDED "T" CLIP: WS\_04

CJ1020 - FLUSH FRAMELINE WITH FLUSH & INSET GIRTS

[Download the DWG file by clicking here.](#)



**INSIDE CORNER GIRT DETAIL**

FLUSH FRAMELINE WITH FLUSH & INSET GIRTS

REFERENCE STANDARD WASHER DETAIL FOR TYPICAL WASHER REQUIREMENTS

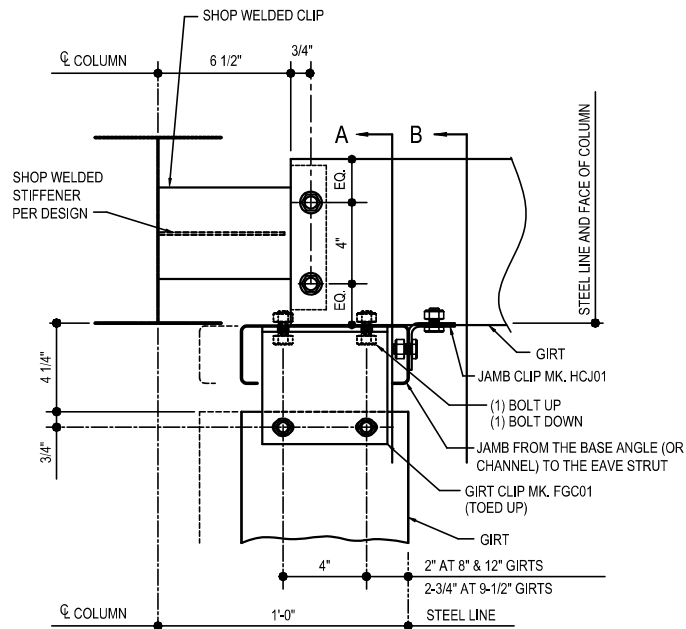
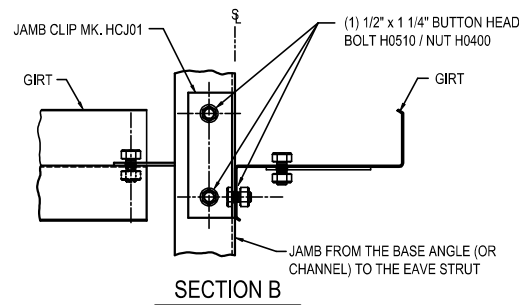
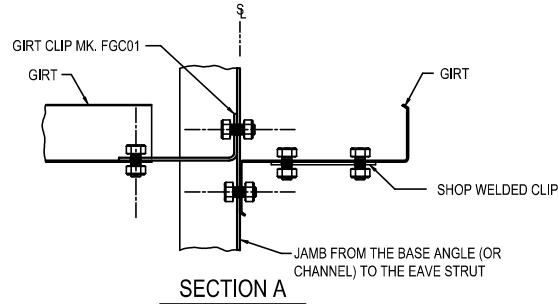
**CJ1020**

Detailer Notes:

- 1) WELDED "T" CLIP TO COLUMN: GFI02
- 2) (2) HOLE WELDED CLIP TO COLUMN FOR 8" GIRT: GRC09
- 3) (2) HOLE WELDED CLIP TO COLUMN FOR 9 1/2" GIRT: GRC03
- 4) ADD STIFFENER PER DESIGN TO WELDED "T" CLIP: WS\_04

CJ1030 - BYPASS FRAMELINE (1'-0") WITH FLUSH GIRT

[Download the DWG file by clicking here.](#)



**INSIDE CORNER GIRTS DETAIL**

BYPASS FRAMELINE (1'-0") WITH FLUSH GIRT  
NOTE: USE (7) 1/2" x 1 1/4" A307 BOLTS H0500/NUTS H0400  
REFERENCE STANDARD WASHER DETAIL FOR TYPICAL WASHER REQUIREMENTS

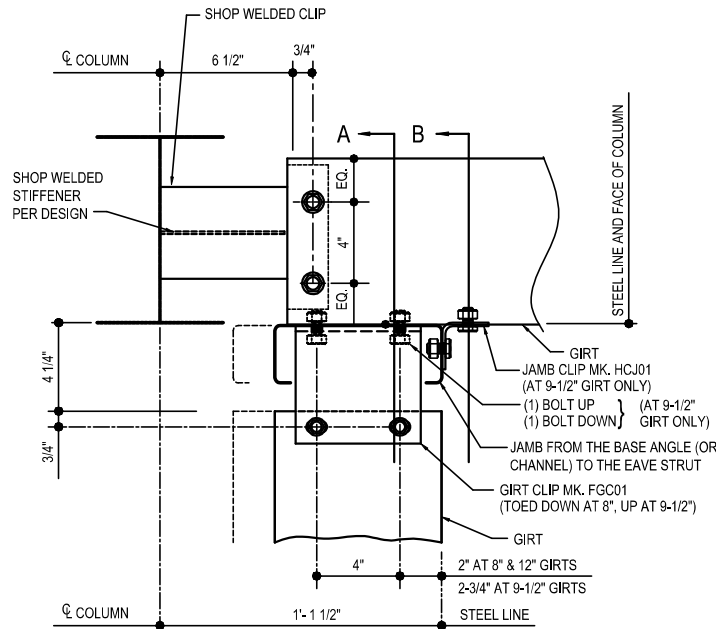
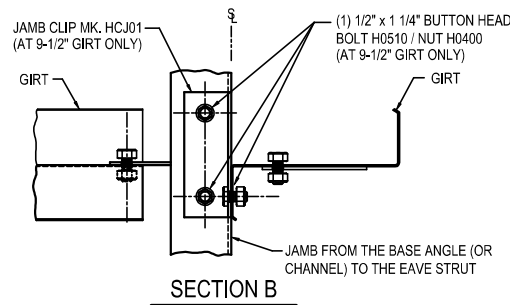
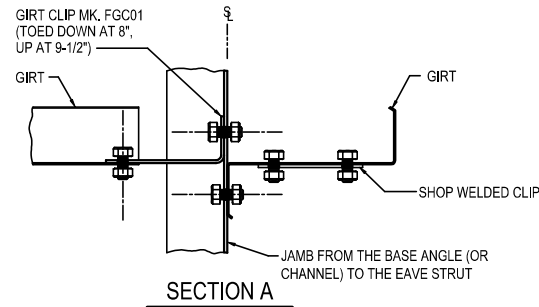
**CJ1030**

**Detailer Notes:**

- 1) WELDED CLIP TO COLUMN: GFI02
- 2) ADD STIFFENER PER DESIGN: WS\_04

CJ1040 - BYPASS FRAMELINE (1'-1 1/2") WITH FLUSH GIRT

[Download the DWG file by clicking here.](#)



**INSIDE CORNER GIRT DETAIL**

BYPASS FRAMELINE (1'-1 1/2") WITH FLUSH GIRT  
NOTE: USE (7) 1/2" x 1 1/4" A307 BOLTS H0500/NUTS H0400  
REFERENCE STANDARD WASHER DETAIL FOR TYPICAL WASHER REQUIREMENTS

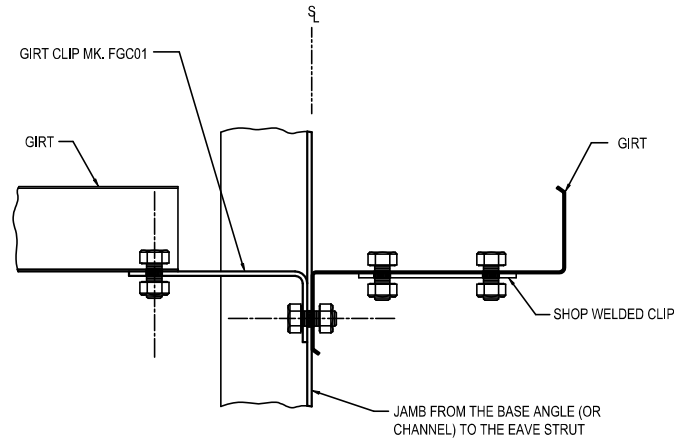
**CJ1040**

**Detailer Notes:**

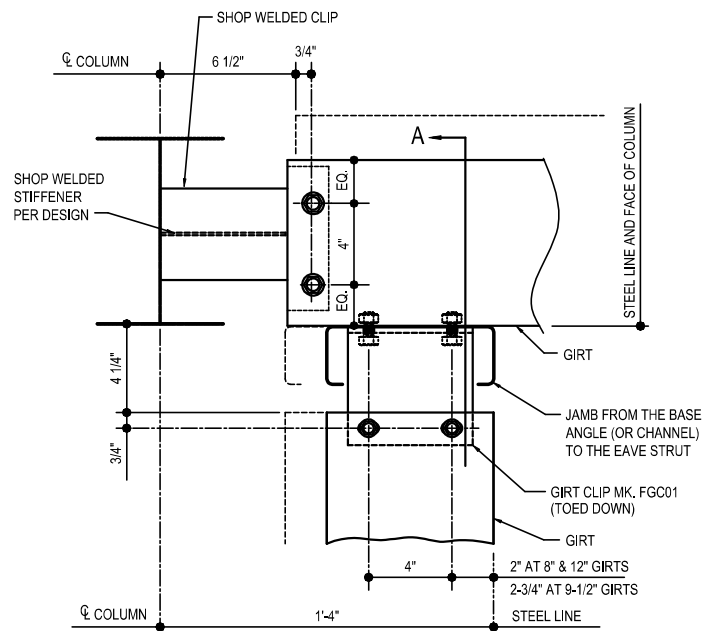
- 1) WELDED CLIP TO COLUMN: GFI02
- 2) ADD STIFFENER PER DESIGN: WS\_04

CJ1050 - BYPASS FRAMELINE (1'-4") WITH FLUSH GIRT

[Download the DWG file by clicking here.](#)



**SECTION A**



**INSIDE CORNER GIRTS DETAIL**

BYPASS FRAMELINE (1'-4") WITH FLUSH GIRT  
NOTE: USE (6) 1/2" x 1 1/4" A307 BOLTS H0500/NUTS H0400  
REFERENCE STANDARD WASHER DETAIL FOR TYPICAL WASHER REQUIREMENTS

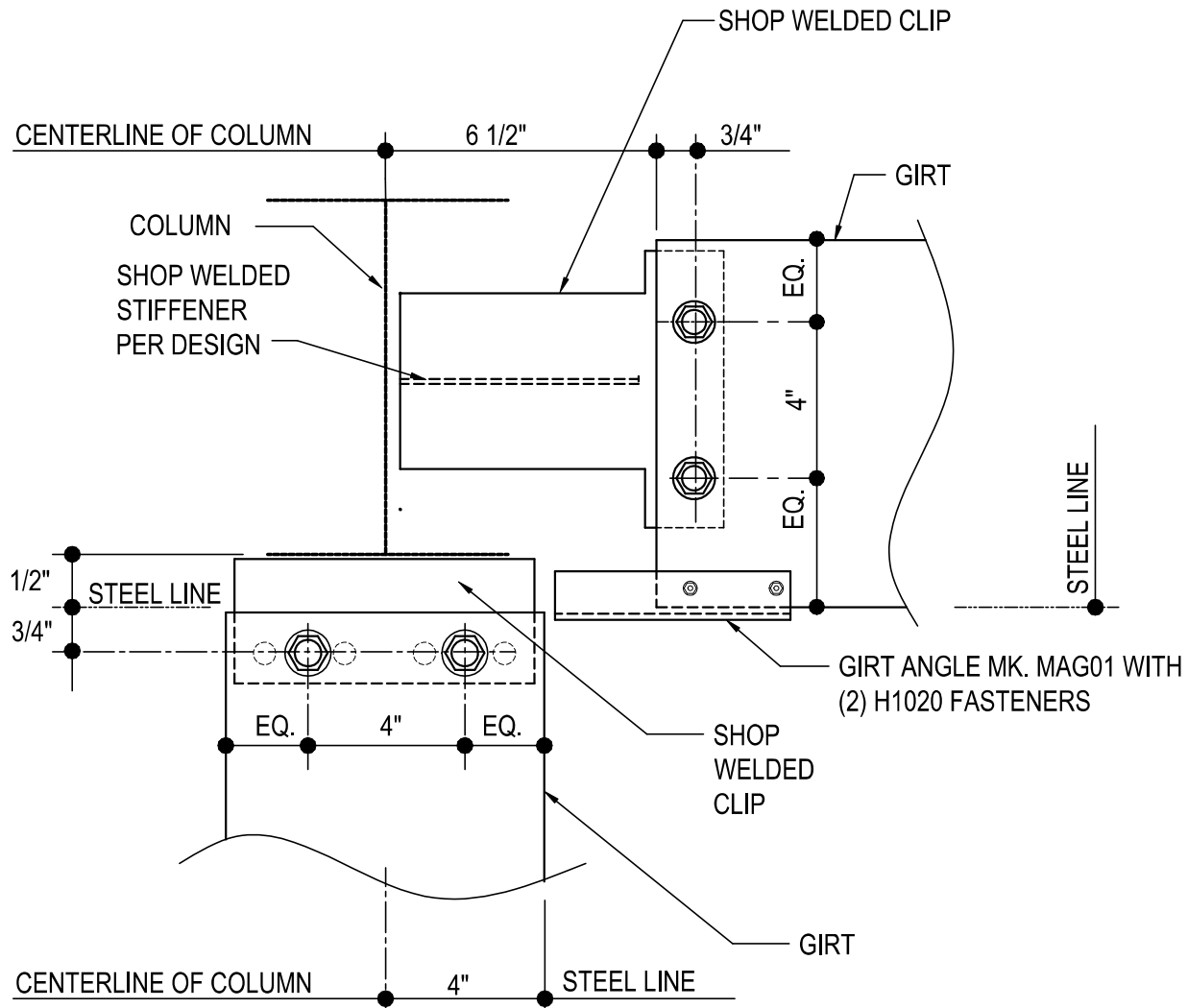
**CJ1050**

**Detailer Notes:**

- 1) WELDED CLIP TO COLUMN: GFI02
- 2) ADD STIFFENER PER DESIGN: WS\_04

CJ1060 - FLUSH FRAMELINE WITH 8" & 9-1/2" INSET GIRT

[Download the DWG file by clicking here.](#)



## INSIDE CORNER GIRT DETAIL

FLUSH FRAMELINE WITH 8" / 9-1/2" INSET GIRT

NOTE: USE (4) 1/2" x 1 1/4" A307 BOLTS H0500/NUTS H0400

REFERENCE STANDARD WASHER DETAIL FOR TYPICAL WASHER REQUIREMENTS

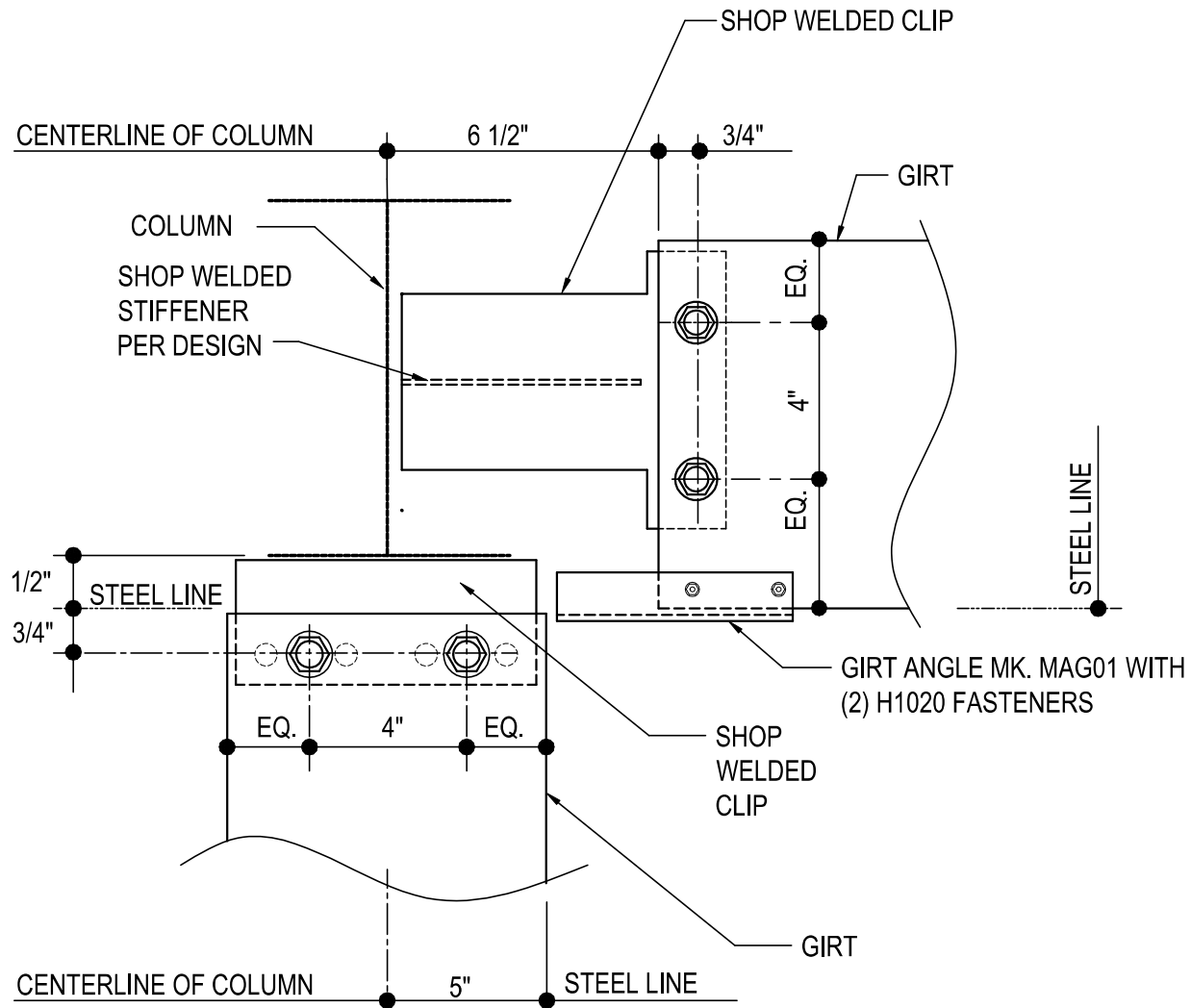
**CJ1060**

Detailer Notes:

- 1) T- CLIP WELDED TO COLUMN: GFI02
- 2) (2) HOLE WELDED CLIP 8" GIRT: GRC03
- 3) (2) HOLE WELDED CLIP 9 1/2" GIRT: GRC09
- 4) ADD STIFFENER TO T-CLIP PER DESIGN: WS\_04

CJ1070 - INSET FRAMELINE WITH 8" & 9-1/2" INSET GIRT

[Download the DWG file by clicking here.](#)



## INSIDE CORNER GIRT DETAIL

INSET FRAMELINE WITH 8" / 9-1/2" INSET GIRT

NOTE: USE (4) 1/2" x 1 1/4" A307 BOLTS H0500/NUTS H0400

REFERENCE STANDARD WASHER DETAIL FOR TYPICAL WASHER REQUIREMENTS

**CJ1070**

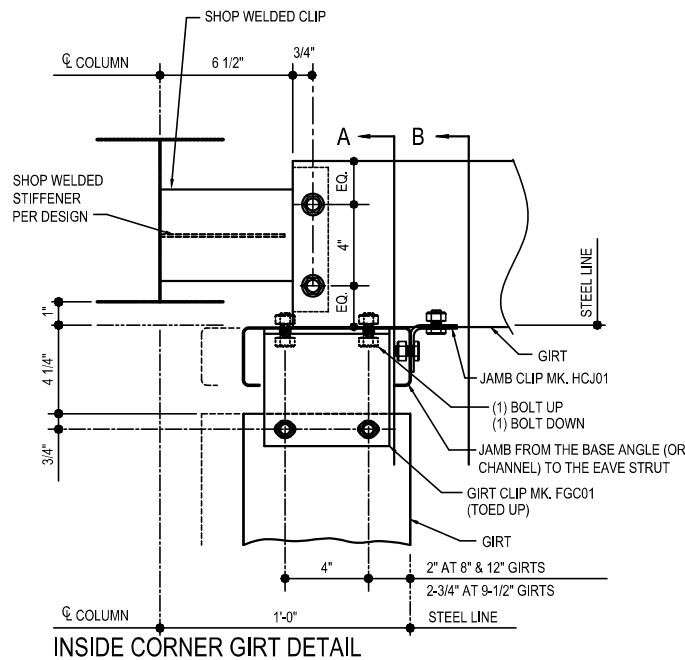
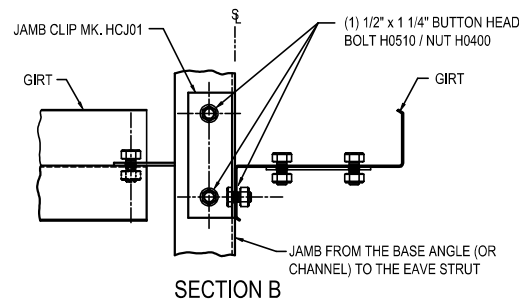
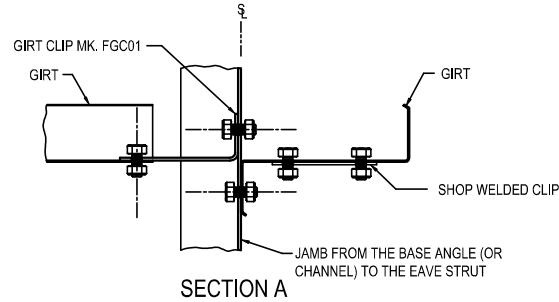
Detailer Notes:

- 1) T- CLIP WELDED TO COLUMN: GFI02
- 2) (2) HOLE WELDED CLIP 8" GIRT: GRC09
- 3) (2) HOLE WELDED CLIP 9 1/2" GIRT: GRC03
- 4) ADD STIFFENER TO T-CLIP PER DESIGN: WS\_04



CJ1080 - BYPASS FRAMELINE (1'-0") WITH INSET GIRT

[Download the DWG file by clicking here.](#)



BYPASS FRAMELINE WITH INSET GIRT  
NOTE: USE (7) 1/2" x 1 1/4" A307 BOLTS H0500/NUTS H0400  
REFERENCE STANDARD WASHER DETAIL FOR TYPICAL WASHER REQUIREMENTS

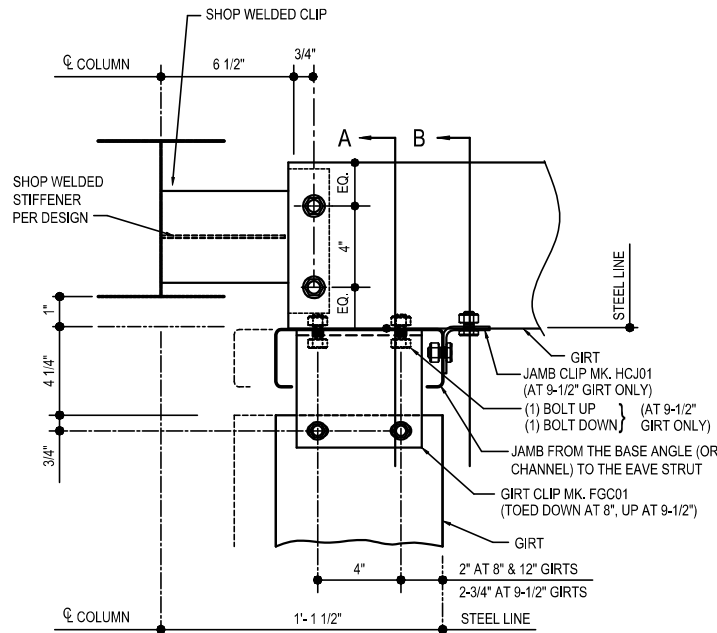
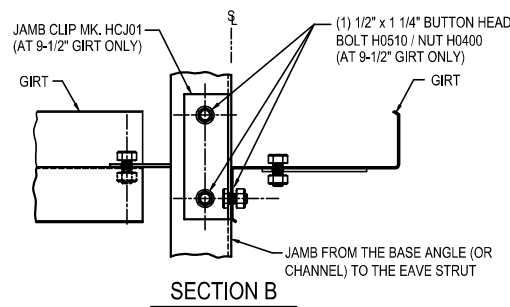
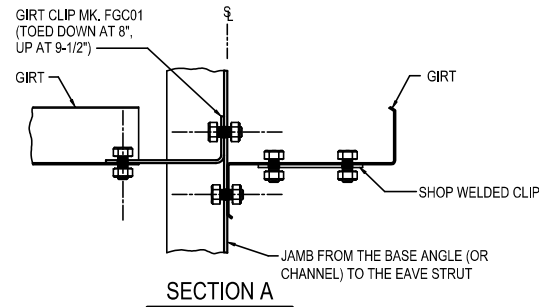
**CJ1080**

Detailer Notes:

- 1) WELDED CLIP TO COLUMN: GFI02
- 2) ADD STIFFENER PER DESIGN: WS\_04

CJ1090 - BYPASS FRAMELINE (1'-1 1/2") WITH INSET GIRT

[Download the DWG file by clicking here.](#)



**INSIDE CORNER GIRT DETAIL**

BYPASS FRAMELINE (1'-1 1/2") WITH INSET GIRT  
NOTE: USE (7) 1/2" x 1 1/4" A307 BOLTS H0500/NUTS H0400  
REFERENCE STANDARD WASHER DETAIL FOR TYPICAL WASHER REQUIREMENTS

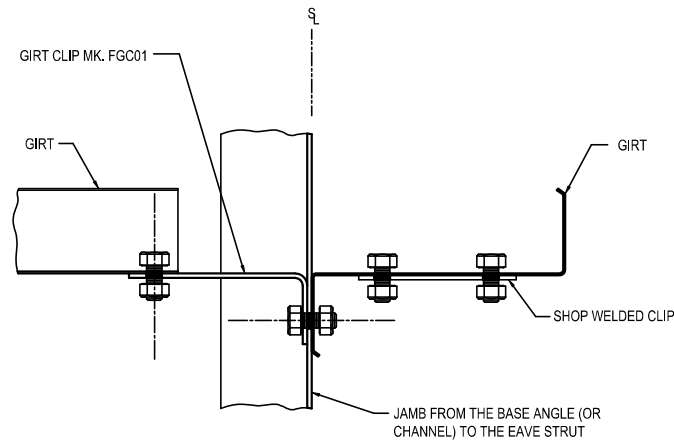
**CJ1090**

**Detailer Notes:**

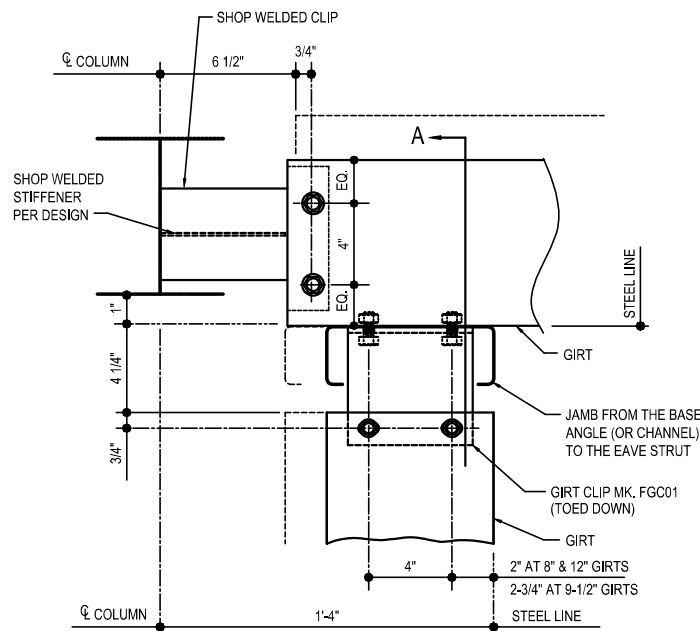
- 1) WELDED CLIP TO COLUMN: GFI02
- 2) ADD STIFFENER PER DESIGN: WS\_04

CJ1100 - BYPASS FRAMELINE (1'-4") WITH INSET GIRT

[Download the DWG file by clicking here.](#)



**SECTION A**



**INSIDE CORNER GIRT DETAIL**

BYPASS FRAMELINE (1'-4") WITH INSET GIRT  
NOTE: USE (6) 1/2" x 1 1/4" A307 BOLTS H0500/NUTS H0400  
REFERENCE STANDARD WASHER DETAIL FOR TYPICAL WASHER REQUIREMENTS

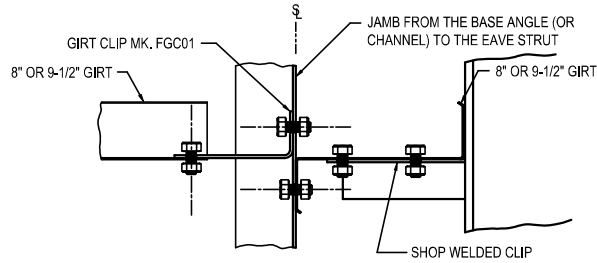
**CJ1100**

Detailer Notes:

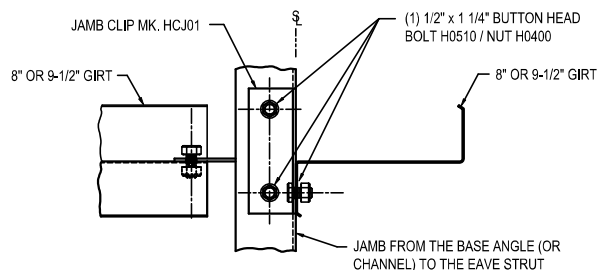
- 1) WELDED CLIP TO COLUMN: GFI02
- 2) ADD STIFFENER PER DESIGN: WS\_04

CJ1110 - FLUSH FRAMELINE WITH SIMPLE SPAN BYPASS GIRT

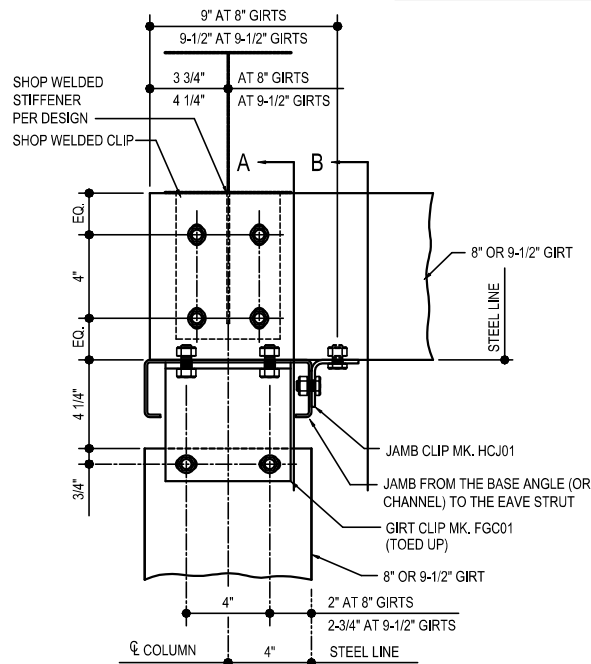
[Download the DWG file by clicking here.](#)



**SECTION A**



**SECTION B**



**INSIDE CORNER GIRT DETAIL**

FLUSH FRAMELINE WITH SIMPLE SPAN BYPASS GIRT  
NOTE: USE (8) 1/2" x 1 1/4" A307 BOLTS H0500/NUTS H0400  
REFERENCE STANDARD WASHER DETAIL FOR TYPICAL WASHER REQUIREMENTS

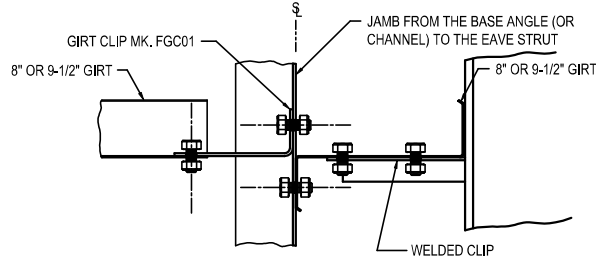
**CJ1110**

**Detailer Notes:**

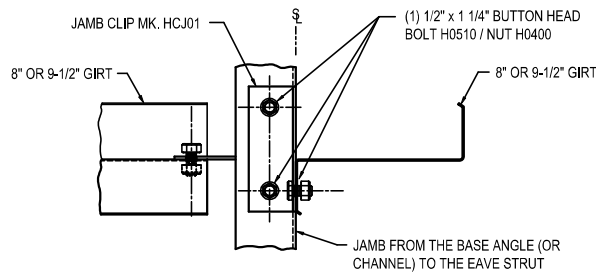
- |   |   |
|---|---|
| 1) (4) HOLE WELDED CLIP TO COLUMN:<br>8" - PCU01<br>9 1/2" - GCB62<br>12" - GCB12 | 2) ADD STIFFENER PER DESIGN:<br>8" GIRT: WS_04<br>9 1/2" GIRT: WS_04<br>12" GIRT: WS_12 |
|---|---|

CJ1120 - INSET FRAMELINE WITH SIMPLE SPAN BYPASS GIRT

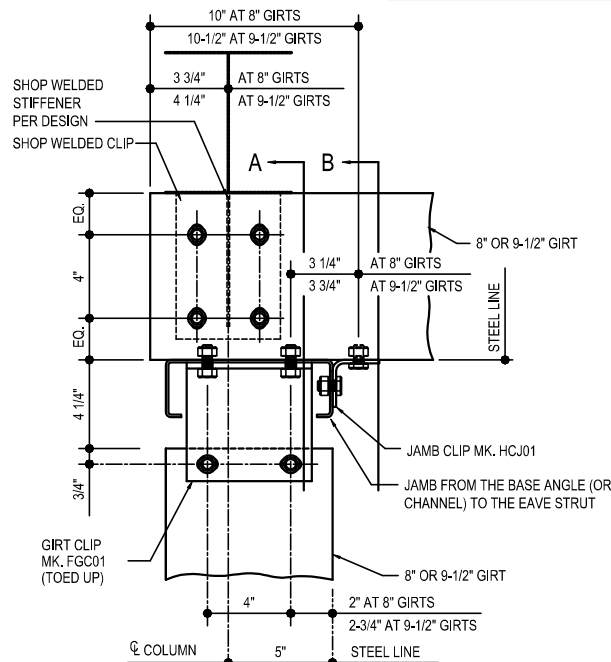
[Download the DWG file by clicking here.](#)



SECTION A



SECTION B



**INSIDE CORNER GIRT DETAIL**

INSET FRAMELINE WITH SIMPLE SPAN BYPASS GIRT  
NOTE: USE (8) 1/2" x 1 1/4" A307 BOLTS H0500/NUTS H0400  
REFERENCE STANDARD WASHER DETAIL FOR TYPICAL WASHER REQUIREMENTS

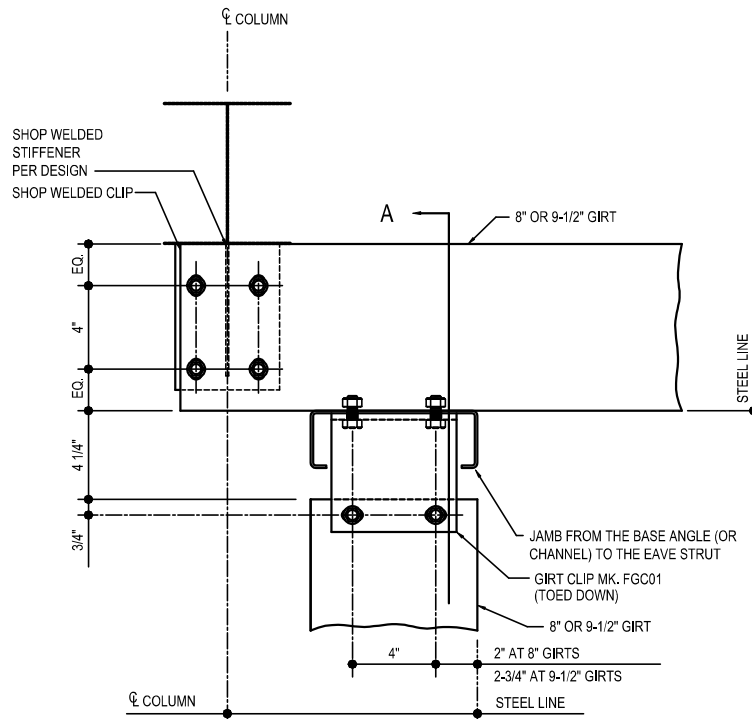
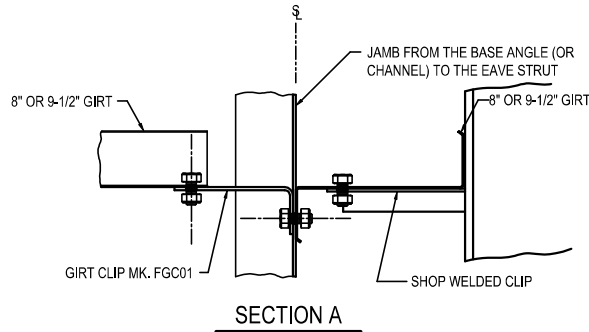
**CJ1120**

Detailer Notes:

- |   |   |
|---|---|
| 1) (4) HOLE WELDED CLIP TO COLUMN:<br>8" - PCU01<br>9 1/2" - GCB62<br>12" - GCB12 | 2) ADD STIFFENER PER DESIGN:<br>8" GIRT: WS_04<br>9 1/2" GIRT: WS_04<br>12" GIRT: WS_12 |
|---|---|

CJ1130 - BYPASS FRAMELINE WITH SIMPLE SPAN BYPASS GIRT

[Download the DWG file by clicking here.](#)



**INSIDE CORNER GIRT DETAIL**

BYPASS FRAMELINE WITH SIMPLE SPAN BYPASS GIRT  
NOTE: USE (8) 1/2" x 1 1/4" A307 BOLTS H0500/NUTS H0400  
REFERENCE STANDARD WASHER DETAIL FOR TYPICAL WASHER REQUIREMENTS

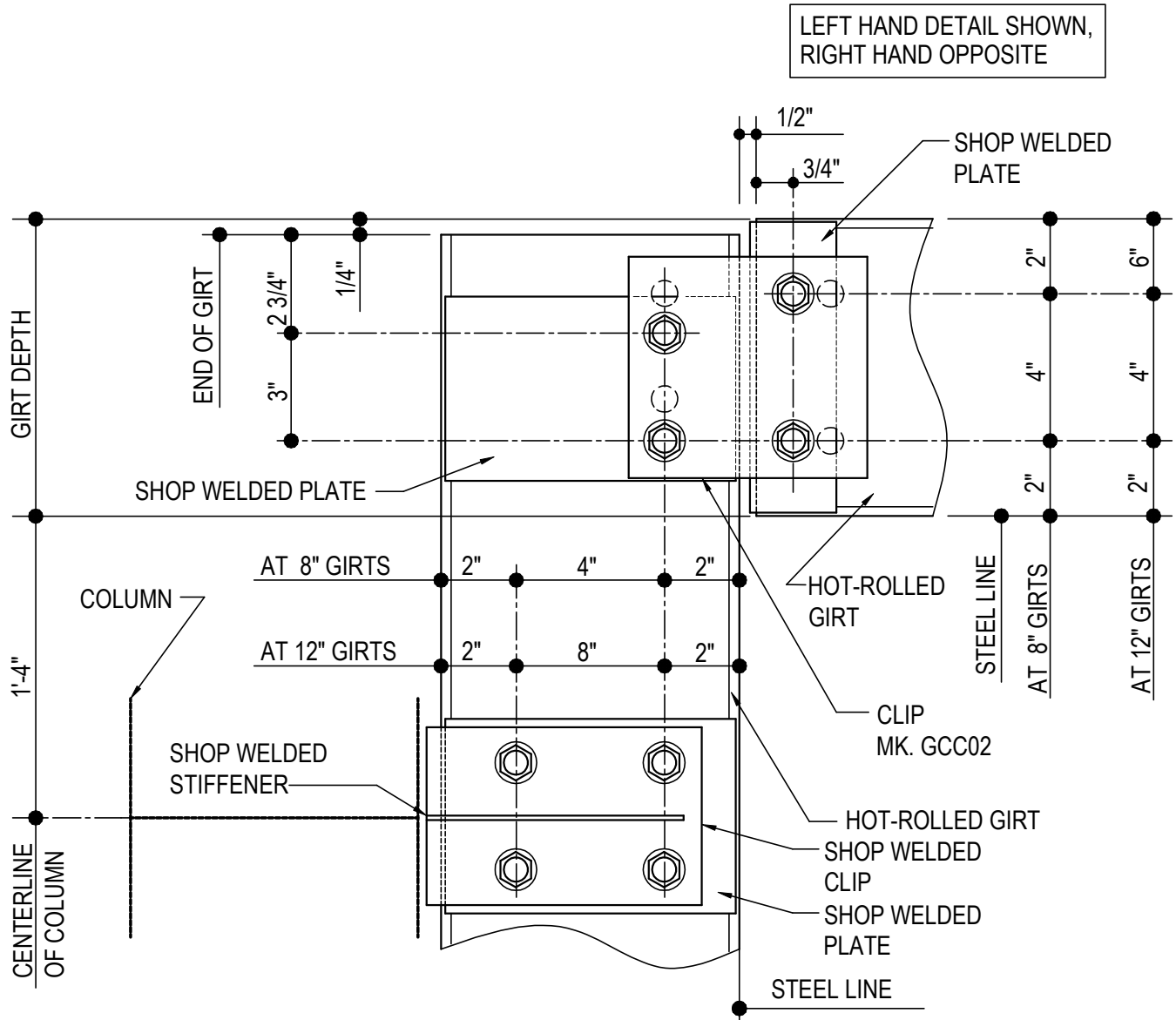
**CJ1130**

Detailer Notes:

- |   |   |
|---|---|
| 1) (4) HOLE WELDED CLIP TO COLUMN:<br>8" - PCU01<br>9 1/2" - GCB62<br>12" - GCB12 | 2) ADD STIFFENER PER DESIGN:<br>8" GIRT: WS_04<br>9 1/2" GIRT: WS_04<br>12" GIRT: WS_12 |
|---|---|

CJ1165 - HOT ROLLED GIRT INTO BYPASS GIRT

[Download the DWG file by clicking here.](#)



## INSIDE CORNER GIRT DETAIL

HOT ROLLED GIRT INTO BYPASS GIRT

NOTE: USE (8) 1/2" x 1 1/4" A307 BOLTS H0500/NUTS H0400

REFERENCE STANDARD WASHER DETAIL FOR TYPICAL WASHER REQUIREMENTS

**CJ1165**

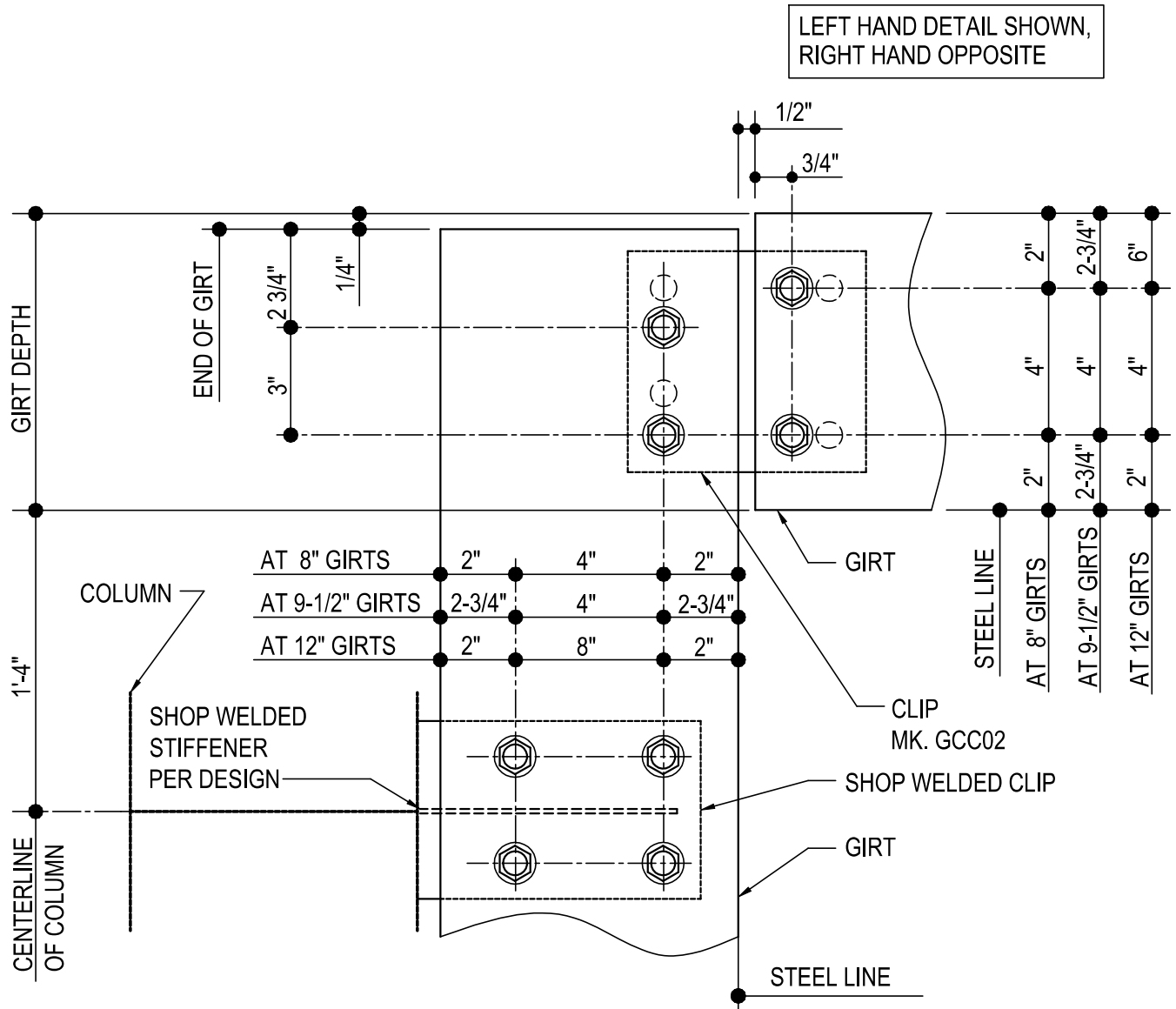
Detailer Notes:

- 1) (4) HOLE WELDED CLIP TO COLUMN:  
8" - GCM04  
12" - GCB12
- 2) (4) HOLE PLATE WELDED TO HR GIRT:  
8" - HCD08 / 12" - HCD12

- 3) (2) HOLE WELDED CLIP TO HR GIRT:  
8" - HCS08 / 12" - HCS12
- 4) SHOP WELDED STIFFENER:  
8" - GCM04 STIFFENER: WS\_04  
12" - GCB12 STIFFENER: WS\_12

CJ1170 - BYPASS GIRT INTO BYPASS GIRT

[Download the DWG file by clicking here.](#)



## INSIDE CORNER GIRT DETAIL

BYPASS GIRT INTO BYPASS GIRT

NOTE: USE (8) 1/2" x 1 1/4" A307 BOLTS H0500/NUTS H0400

REFERENCE STANDARD WASHER DETAIL FOR TYPICAL WASHER REQUIREMENTS

**CJ1170**

Detailer Notes:

- 1) SHOP WELDED CLIP:  
8" GIRT = PCU01  
9-1/2" GIRT = GCB62  
12" GIRT = GCB12

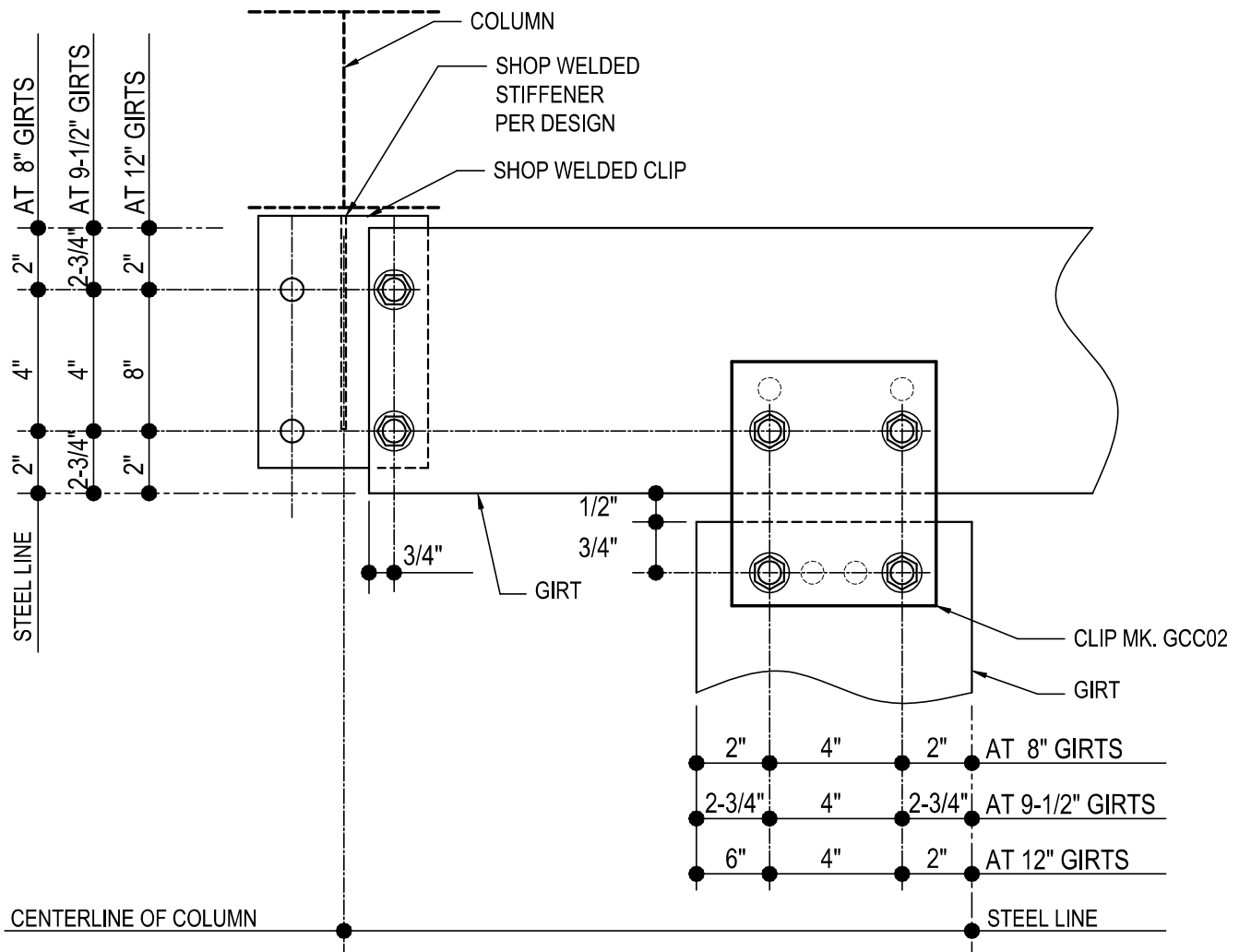
- 2) ADD STIFFENER PER DESIGN:  
8" GIRT: WS\_04  
9 1/2" GIRT: WS\_04  
12" GIRT: WS\_12



CJ1220 - BYPASS GIRT INTO BYPASS GIRT

[Download the DWG file by clicking here.](#)

RIGHT HAND DETAIL SHOWN,  
LEFT HAND OPPOSITE



## INSIDE CORNER GIRT DETAIL

BYPASS GIRT INTO BYPASS GIRT

NOTE: USE (6) 1/2" x 1 1/4" A307 BOLTS H0500/NUTS H0400

REFERENCE STANDARD WASHER DETAIL FOR TYPICAL WASHER REQUIREMENTS

**CJ1220**

Detailer Notes:

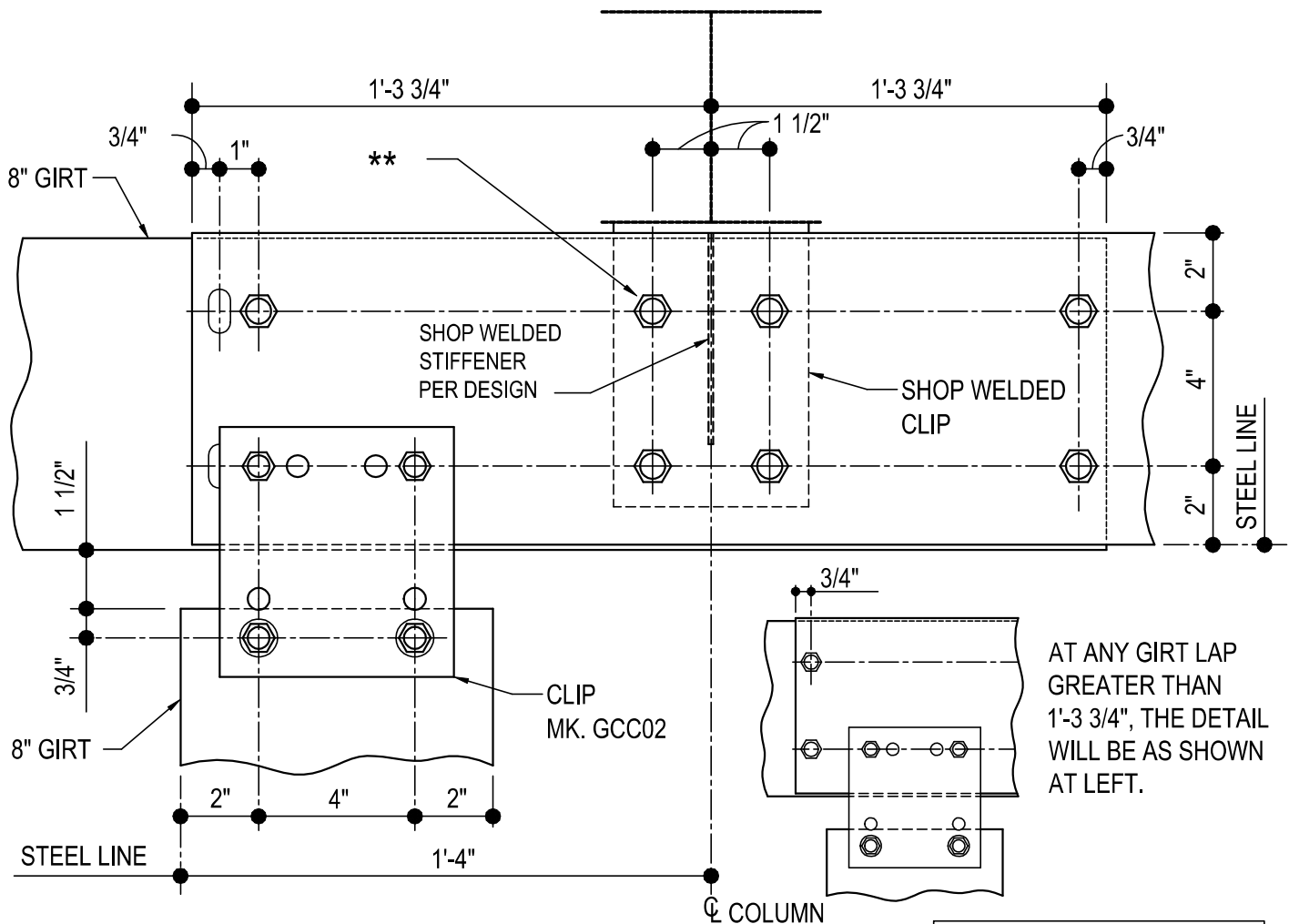
- 1) SHOP WELDED CLIP TO COLUMN:
- 8" - PCU01
- 9 1/2" - GCB62
- 12" - GCB12

- 2) ADD STIFFENER PER DESIGN:
- 8" GIRT: WS\_04
- 9 1/2" GIRT: WS\_04
- 12" GIRT: WS\_12

CJ1500 - 8" LAPPED BYPASS GIRT AT 8" INSIDE CORNER GIRT

[Download the DWG file by clicking here.](#)

**\*\* USE (1) 1/2" X 1 1/4" BUTTON HEAD BOLT H0510 / NUT H0400 AT THIS LOCATION. REFER TO THE "LAPPED GIRT DETAIL" FOR ADDITIONAL INFORMATION.**



**INSIDE CORNER GIRT DETAIL**

8" LAPPED BYPASS GIRT AT 8" INSIDE CORNER GIRT

NOTE: USE (11) 1/2" x 1 1/4" A307 BOLTS H0500/NUTS H0400

REFERENCE STANDARD WASHER DETAIL FOR TYPICAL WASHER REQUIREMENTS

LEFT HAND DETAIL SHOWN,  
RIGHT HAND OPPOSITE

**CJ1500**

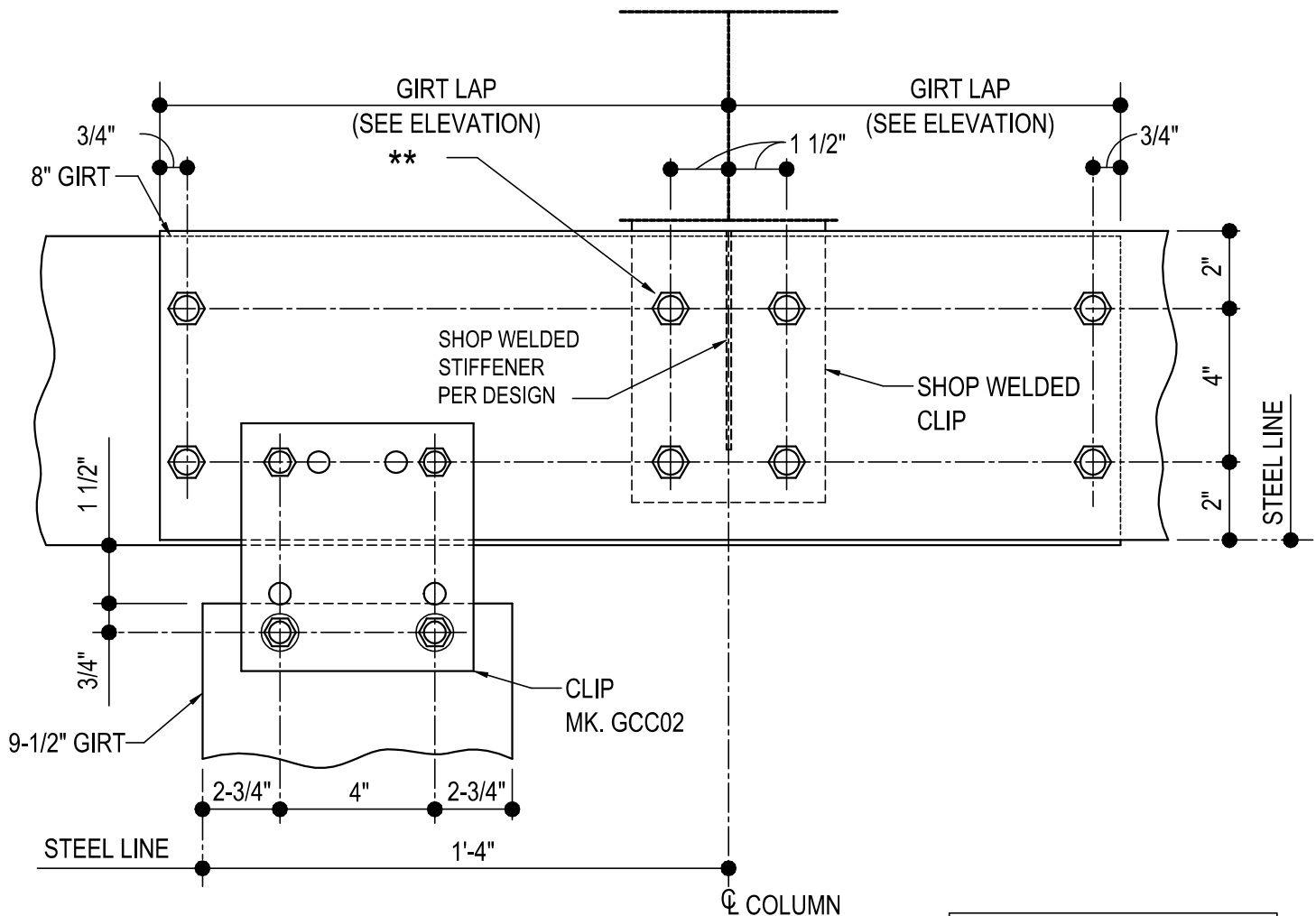
Detailer Notes:

- 1) SHOP WELDED CLIP: 8" GIRT = PCU01
- 2) ADD STIFFENER PER DESIGN: WS\_04

CJ1520 - 8" LAPPED BYPASS GIRT AT 9-1/2" INSIDE CORNER GIRT (SHOP WELDED CLIP)

[Download the DWG file by clicking here.](#)

**\*\* USE (1) 1/2" X 1 1/4" BUTTON HEAD BOLT H0510 / NUT H0400 AT THIS LOCATION. REFER TO THE "LAPPED GIRT DETAIL" FOR ADDITIONAL INFORMATION.**



**INSIDE CORNER GIRT DETAIL**

LEFT HAND DETAIL SHOWN,  
RIGHT HAND OPPOSITE

8" LAPPED BYPASS GIRT AT 9-1/2" INSIDE CORNER GIRT

NOTE: USE (11) 1/2" x 1 1/4" A307 BOLTS H0500/NUTS H0400

REFERENCE STANDARD WASHER DETAIL FOR TYPICAL WASHER REQUIREMENTS

**CJ1520**

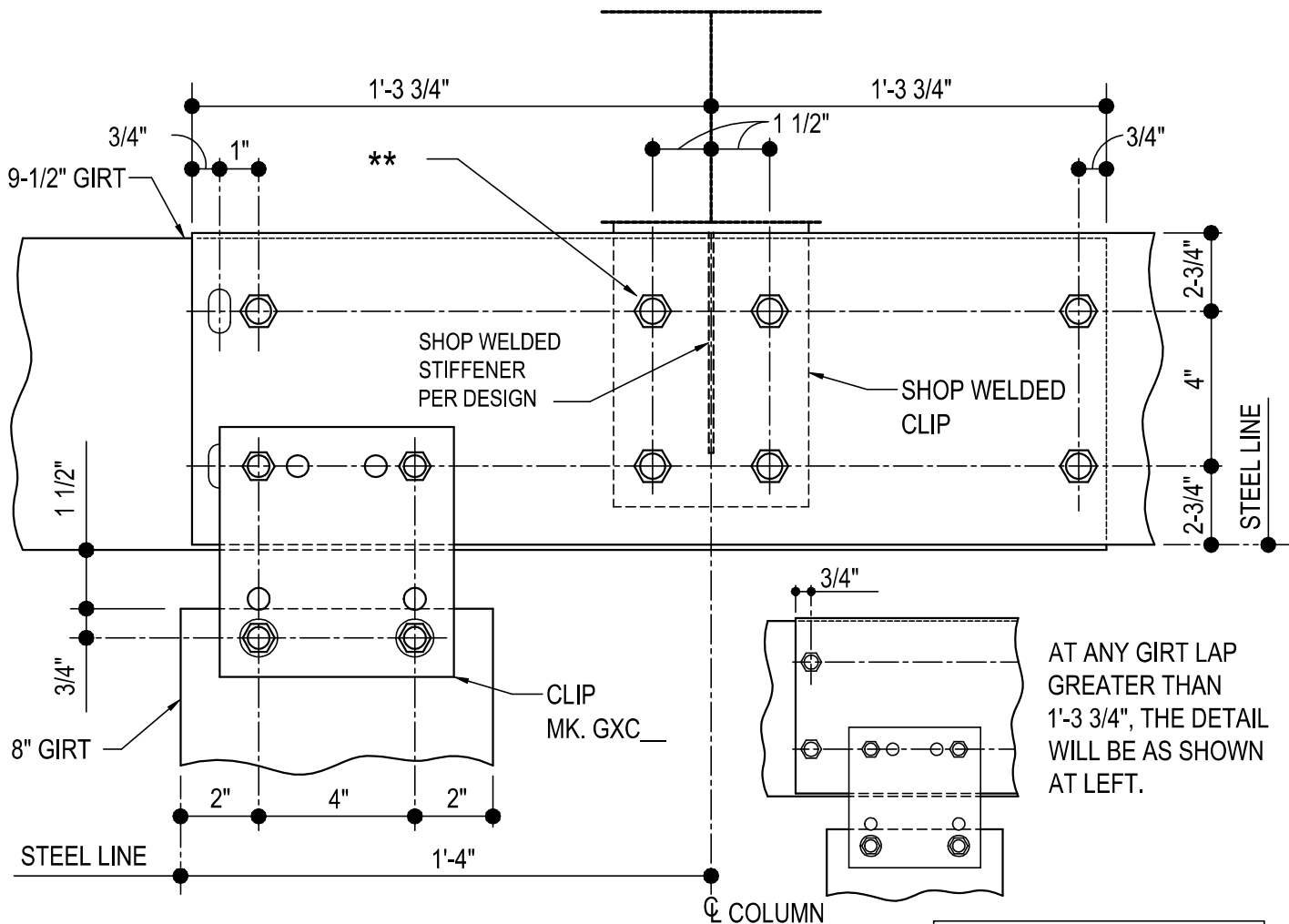
Detailer Notes:

- 1) SHOP WELDED CLIP: 8" GIRT = PCU01
- 2) ADD STIFFENER PER DESIGN: WS\_04

CJ1540 - 9-1/2" LAPPED BYPASS GIRT AT 8" INSIDE CORNER GIRT (SHOP WELDED CLIP)

[Download the DWG file by clicking here.](#)

\*\* USE (1) 1/2" X 1 1/4" BUTTON HEAD BOLT H0510 / NUT H0400 AT THIS LOCATION. REFER TO THE "LAPPED GIRT DETAIL" FOR ADDITIONAL INFORMATION.



**INSIDE CORNER GIRT DETAIL**

9-1/2" LAPPED BYPASS GIRT AT 8" INSIDE CORNER GIRT

NOTE: USE (11) 1/2" x 1 1/4" A307 BOLTS H0500/NUTS H0400

REFERENCE STANDARD WASHER DETAIL FOR TYPICAL WASHER REQUIREMENTS

LEFT HAND DETAIL SHOWN,  
RIGHT HAND OPPOSITE

**CJ1540**

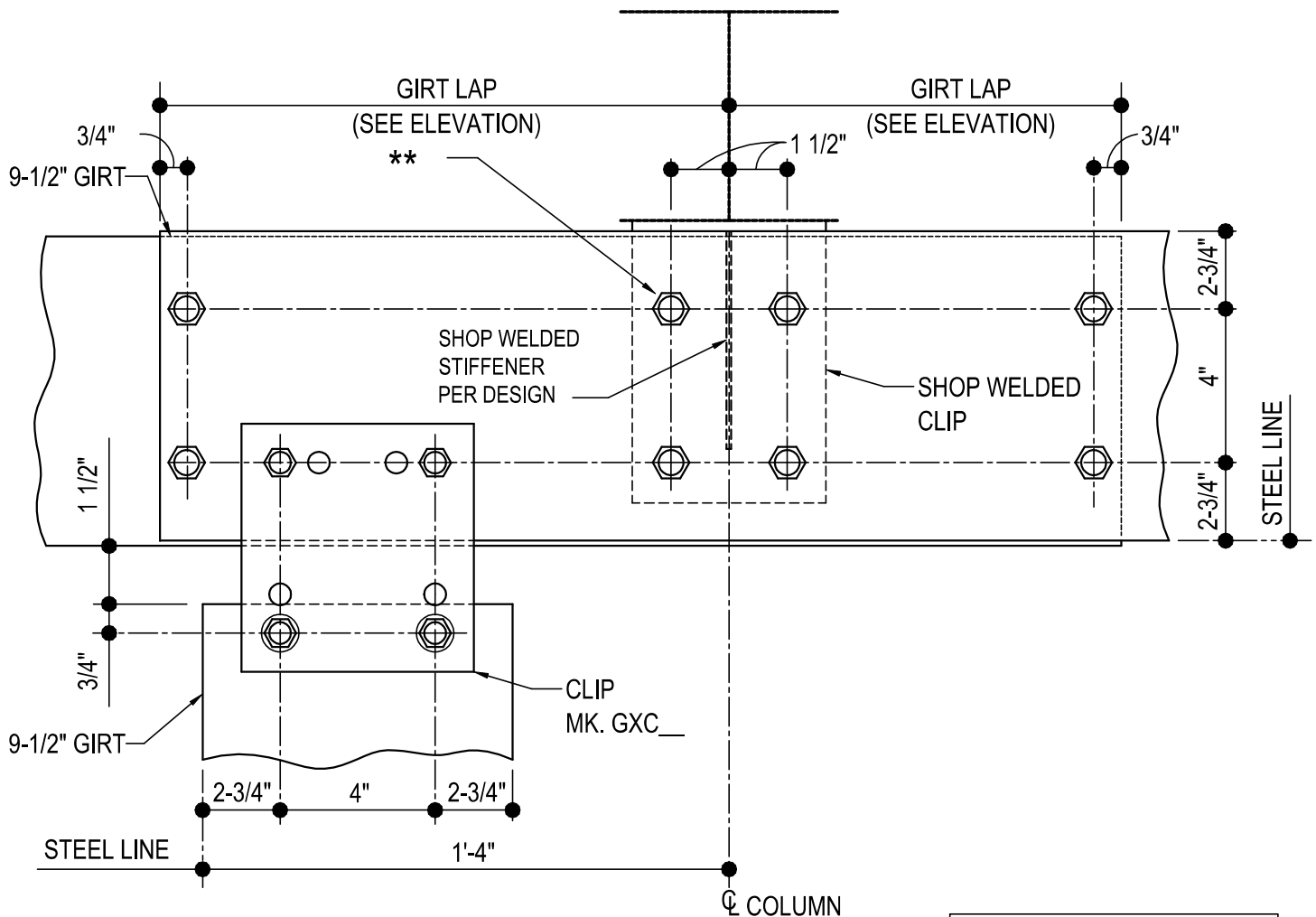
Detailer Notes:

- 1) SHOP WELDED CLIP: 9-1/2" GIRT = GCB62
- 2) ADD STIFFENER PER DESIGN: WS\_04

CJ1560 - 9-1/2" LAPPED BYPASS GIRT AT 9-1/2" INSIDE CORNER GIRT (SHOP WELDED CLIP)

[Download the DWG file by clicking here.](#)

**\*\*** USE (1) 1/2" X 1 1/4" BUTTON HEAD BOLT H0510 / NUT H0400 AT THIS LOCATION. REFER TO THE "LAPPED GIRT DETAIL" FOR ADDITIONAL INFORMATION.



## INSIDE CORNER GIRT DETAIL

LEFT HAND DETAIL SHOWN,  
RIGHT HAND OPPOSITE

9-1/2" LAPPED BYPASS GIRT AT 9-1/2" INSIDE CORNER GIRT

NOTE: USE (11) 1/2" x 1 1/4" A307 BOLTS H0500/NUTS H0400

REFERENCE STANDARD WASHER DETAIL FOR TYPICAL WASHER REQUIREMENTS

**CJ1560**

Detailer Notes:

- 1) SHOP WELDED CLIP: 9-1/2" GIRT = GCB62
- 2) ADD STIFFENER PER DESIGN: WS\_04