

CURB DETAILS

EN4020 - SINGLE ROOF CURB WITH SUPPORT FRAMING

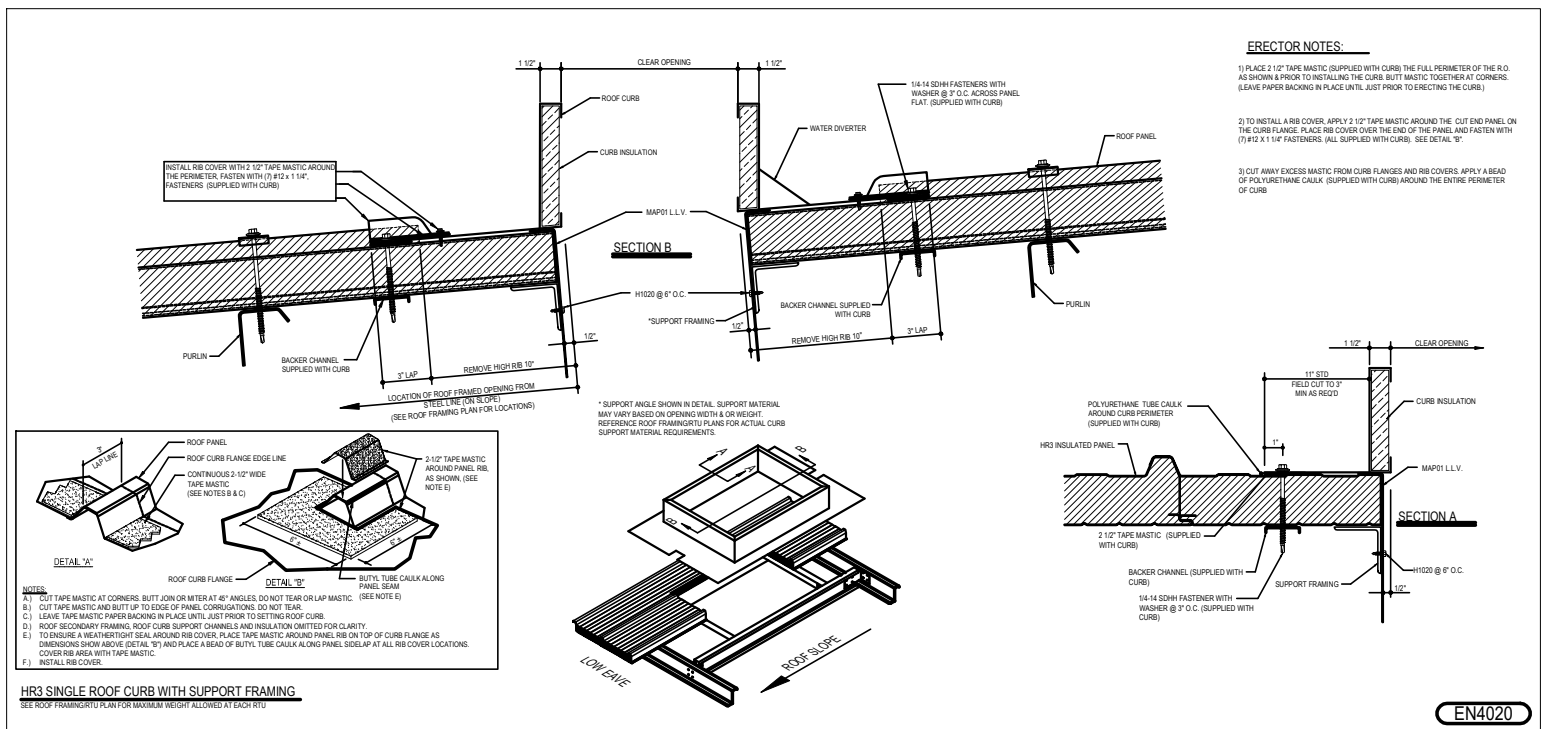
EN4030 - DOUBLE ROOF CURB

EN4099 - LIGHTWEIGHT ROOF CURB SUPPORT INSTALLATION

EN4100 - LIGHTWEIGHT ROOF CURB

EN4020 - SINGLE ROOF CURB WITH SUPPORT FRAMING

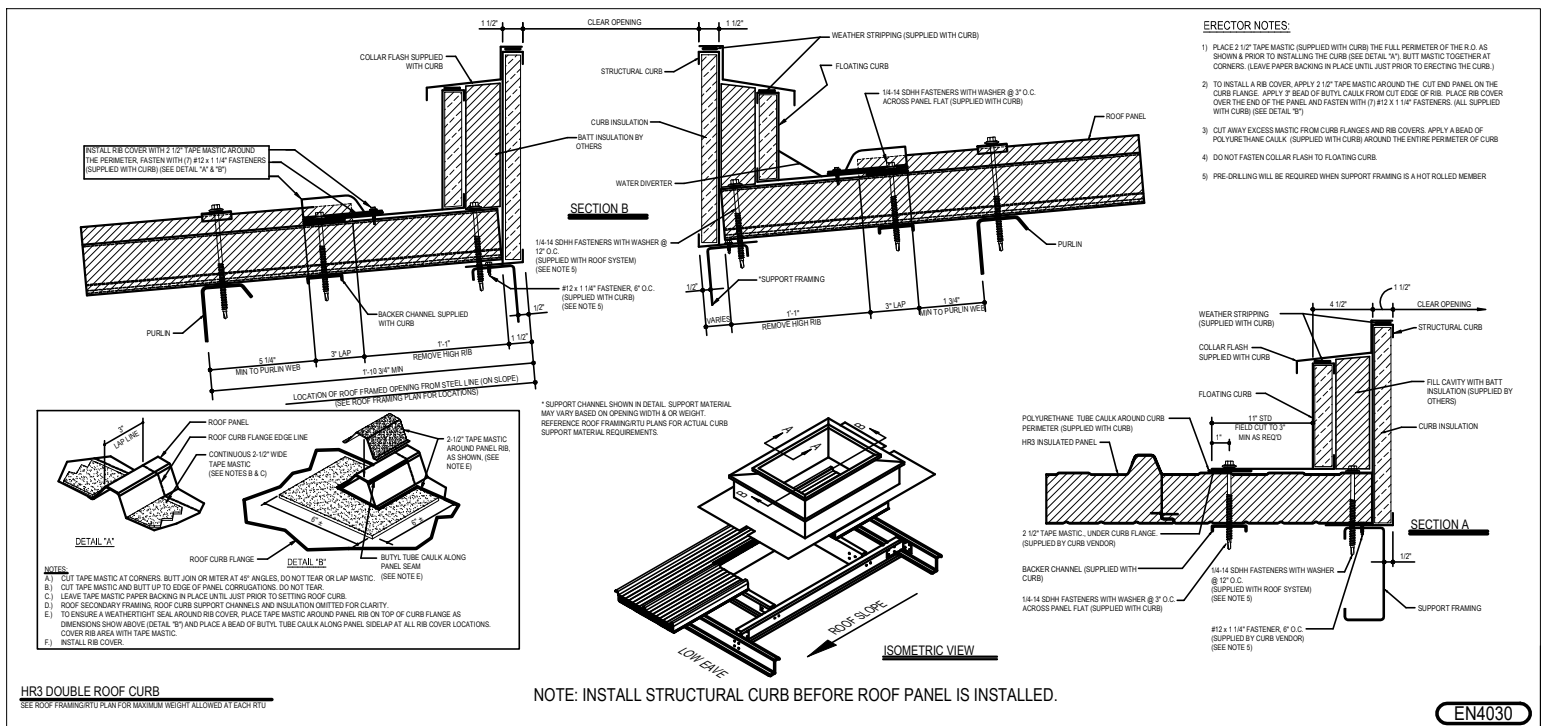
[Download the DWG file by clicking here.](#)



EN4020

EN4030 - DOUBLE ROOF CURB

Download the DWG file by clicking here.



EN4100 - LIGHTWEIGHT ROOF CURB

Download the DWG file by clicking here.

SAFETY PRECAUTION:
WORKERS SHOULD MAINTAIN A CONSTANT AWARENESS OF THEIR LOCATION IN RELATION TO THE ROOF EDGE AND TO ANY ROOF OPENINGS AT ALL TIMES.

RIB COVERS AT EACH PANEL CORRUGATION (SEE NOTE E. SEE DETAIL '9') (SUPPLIED WITH CURB)

FIELD NOTCH UPSLOPE AND DOWNSLOPE. DO NOT OVERSIZE NOTCHES. PROPER NOTCHING OF FLANGES IS CRITICAL TO WEATHERTIGHTNESS.

3/16" FLANGE NOTCH DETAIL (TYPICAL)

1/4" UPSLOPE OVERLAP SIDE

DEBURR ALL FIELD CUT EDGES AT PANEL, CORRUGATIONS AND PANEL EDGES

DETAIL 'A'

SEE NOTE 'A', 'TYPICAL' AT CORNERS

CONTINUOUS 3/16" TAPE MASTIC (BOTH SIDES) (SEE NOTE C)

LAP LINE

CONTINUOUS 3/16" TAPE MASTIC (UPSLOPE/DOWNSLOPE) (SEE NOTES B & C) (SUPPLIED WITH CURB)

DETAIL 'A'

ROOF PANEL

ROOF CURB FLANGE EDGE LINE

CONTINUOUS 3/16" TAPE MASTIC (SEE NOTES B & C)

3/16" UPSLOPE

3/16" DOWNSLOPE

2-007 TAPE MASTIC AROUND PANEL RIB AS SHOWN (SEE NOTE B)

ROOF CURB FLANGE

DETAIL 'B'

BUTYL TUBE CAULK ALONG PANEL SEAM (SEE NOTE E)

ROOF CURBS

FASTENERS #14-1/4" (LOCATE IN PRE-DRILLED FLANGE HOLES, 7" O.C.)

14-14 SDH FASTENERS WITH WASHER @ 7" O.C. LOCATE IN PRE-DRILLED HOLES (FASTENERS PROVIDED BY PANEL SUPPLIER)

POLYURETHANE TUBE CAULK AROUND ROOF CURB PERIMETER

CONTINUOUS 3/16" TAPE MASTIC (BOTH SIDES)

SECTION A-A

NOTES:

A) CUT TAPE MASTIC AT CORNERS, BUT JOIN OR INTER AT 45° ANGLES. DO NOT TEAR OR LAP MASTIC.

B) CUT TAPE MASTIC AND BUTT UP TO EDGE OF PANEL, CORRUGATIONS, DO NOT TEAR.

C) LEAVE TAPE MASTIC PAPER BACKING IN PLACE (DO NOT REMOVE) UNTIL AFTER SETTING ROOF CURB.

D) ROOF SECONDARY FRAMING, ROOF CURB SUPPORT CHANNELS AND INSULATION OMITTED FOR CLARITY.

E) TO ENSURE A WEATHERTIGHT SEAL, APPLY RIB COVER, PLACE TAPE MASTIC AROUND PANEL RIB ON TOP OF CURB FLANGE AS DIMENSIONS SHOWN ABOVE (DETAIL '9') AND PLACE A BEAD OF BUTYL TUBE CAULK ALONG PANEL SEAM AT ALL RIB COVER LOCATIONS, READY FOR RIB COVER INSTALLATION.

INSTALLATION PROCEDURES:

- 1) PRIOR TO INSTALLING CURB, MARK 1/4" LAP LINE ON THE UPSLOPE/DOWNSLOPE ROOF PANEL EDGES. PLACE CURB OVER OPENING. LINE UP CURB FLANGES WITH 1/4" LAP LINE. CENTER CURB OVER OPENING (SIDE TO SIDE). MARK PANEL RIB LOCATIONS.
- 2) NOTCH UPPER AND LOWER CURB FLANGES AS REQUIRED. SEE NOTCH DETAIL FOR DIMENSIONS, OR FIT CURB OVER OPENING. CHECK FOR PROPER FIT.
- 3) IF A NEW CONSTRUCTION INSTALL, AND THE 4" CORNER FASTENERS WERE INCLUDED, REMOVE FROM THE CORNERS OF FRAMING NOW, OTHERWISE OMP NOTE.
- 4) CLEAN OFF ALL DEBRIS, OIL, METAL SHAVINGS, ETC., FROM AROUND THE ROOF OPENING AND FROM ROOF CURB UNDERSIDE.
- 5) INSTALL ALL PROPER TAPE MASTICS AROUND PERIMETER OF ROOF OPENING. (SEE DETAIL '9' AND NOTES A, B, AND C).
- 6) AFTER TAPE MASTIC PAPER BACKING IS REMOVED, CAREFULLY SET CURB OVER OPENING, ALIGN AND FASTEN WITH #14-1/4" ROOF FASTENERS IN PRE-DRILLED FLANGE HOLES AND/OR EVERY 7".
- 7) PRIOR TO RIB COVER INSTALLATION, RE-NEW NOTE E. SEE DETAIL '9' FOR PROPER PLACEMENT OF TAPE MASTIC/TUBE CAULK. PLACE COVER OVER PANEL RIB, LINING UP WITH EDGE OF CURB FLANGE, PUSHING DOWN FIRMLY. FASTEN RIB COVER WITH 16 FASTENERS AROUND PERIMETER.
- 8) AFTER ALL ROOF CURB COMPONENTS HAVE BEEN INSTALLED, MAKE SURE AREA AROUND ENTIRE ROOF CURB PERIMETER (INCLUDING RIB COVERS) IS CLEAR OF DEBRIS, OIL, METAL SHAVINGS, ETC. AS NECESSARY. TRIM AWAY EXCESS TAPE MASTIC OR TUBE CAULK FROM AROUND CURB COVERS.
- 9) CUT AWAY EXCESS TAPE MASTIC OR TUBE CAULK. APPLY A BEAD OF POLYURETHANE CAULK (SUPPLIED WITH CURB) AROUND THE ENTIRE PERIMETER OF CURB.
- 10) INSTALL FALL PROTECTION SAFETY SCREEN AND DOMED SKYLIGHT AS INSTRUCTED IN DETAILS BELOW.

14-14 SDH FASTENERS WITH WASHER @ 7" O.C. ACROSS PANEL FLAT (SUPPLIED WITH ROOF SYSTEM)

ROOF CURBS

7" #14-1/4" FASTENERS BEAD PER RIB COVERS (SUPPLIED WITH CURB)

RIB COVERS AT EACH PANEL CORRUGATION (SEE NOTE E)

14-14 SDH FASTENERS WITH WASHER @ 7" O.C.

POLYURETHANE TUBE CAULK AROUND ROOF CURB PERIMETER (RIB COVERS) (SUPPLIED WITH CURB)

INSULATED ROOF PANEL

INTERIOR PURLINS (NOT SHOWN FOR CLARITY)

CROSS SUPPORT CAP (SUPPLIED WITH CURB)

CONTINUOUS 3/16" TAPE MASTIC (SUPPLIED WITH CURB)

BACKER PLATE SUPPLIED WITH CURB

1 1/2" METAL

SECTION B-B

FALL PROTECTION SAFETY SCREEN

CONTINUOUS 3/16" TAPE MASTIC AROUND CURB PERIMETER (SUPPLIED WITH CURB)

ROOF CURB

POLYURETHANE TUBE CAULK AROUND CURB PERIMETER (SUPPLIED WITH CURB)

ROOF PANEL

CURB SUPPORT CAP

FALL PROTECTION / SAFETY SCREEN INSTALLATION:

- 1) AS REQUIRED, CUT CURB INSULATION TO LENGTH TO FIT AROUND THE ENTIRE PERIMETER OF ROOF CURB.
- 2) PLACE CURB INSULATION INTO BOTTOM CURB SLOT WITH WHITE FACE EXPOSED.
- 3) TAPE ANY SEAMS WITH WHITE INSULATION TAPE BY OTHERS.
- 4) INSTALL TAPE MASTIC CONTINUOUS ALONG TOP FLANGE OF CURB.
- 5) PLACE SAFETY SCREEN OVER CURB. DO NOT CUT FALL SEAT SAFETY SCREEN AT THIS STEP.
- 6) TUCK THE CURB INSULATION INTO CHANNEL OF SAFETY SCREEN.
- 7) FULLY SEAT SAFETY SCREEN TO TOP OF CURB TO NEAT INSULATION.

DOMED SKYLIGHT

FALL PROTECTION SAFETY SCREEN

ROOF CURB

DOMED SKYLIGHT INSTALLATION:

- 1) HANDLE DOMED SKYLIGHT WITH CARE. INSURE THE INSIDE OF THE UNIT IS CLEAR OF DEBRIS THROUGHOUT THE INSTALLATION PROCESS. DO NOT HIT SKYLIGHT FRAME WITH HAMMER OR ANY OTHER KIND OF Mallet. THIS MAY CAUSE THE WELDS TO SPLIT.
- 2) PROPERLY ELEVATE DOMED SKYLIGHT FROM FLAT SURFACES DURING STORAGE TO PREVENT HEAT BUILDUP OR EXCESSIVE INTERNAL TEMPERATURES UNDER THE DOME. OTHERWISE DAMAGE CAN OCCUR TO INTERNAL COMPONENTS.
- 3) CALLING THE TOP SIDE OF THE FALL PROTECTION SAFETY SCREEN IS NOT REQUIRED. AN AIR SEAL TAPE IS PRE-MOUNTED TO THE UNDERSIDE OF THE SKYLIGHT.
- 4) SET DOMED SKYLIGHT OVER PREPARED CURB, MAKING SURE SKYLIGHT IS SQUARE AND EQUALLY SPACED ON ALL FOUR SIDES OF CURB.
- 5) ATTACH SKYLIGHT WITH PROVIDED SCREWS. BE SURE NOT TO DISTORT THE SKYLIGHT FRAME. DRIVE SCREWS JUST ENOUGH TO THE FLANGE. OVERTIGHTENING MAY CREATE FORCES WHICH MAY CRACK THE SKYLIGHT LENS.

DOMED SKYLIGHT

FALL PROTECTION SAFETY SCREEN

ROOF CURB

SKYLIGHT FASTENERS #14-1/4" x 1/2" IN ALL PRE-DRILLED SKYLIGHT FRAME HOLES PROVIDED BY SKYLIGHT MANUFACTURER. (PRE-DRILLING MAY BE REQUIRED INTO OTHER MATERIALS)

DOMED SKYLIGHT CLEANING:

- 1) WHEN CLEANING LENS, USE ONLY WATER OR WATER WITH MILD SOAP. USE A SOFT BRUSH TO MINIMIZE THE SCRATCHING.
- 2) NEVER USE AMMONIA, ALCOHOL, KODOLIN OR PETROLEUM BASED PRODUCTS TO CLEAN LENS. THIS WILL CAUSE DEGRADATION AND/OR CRACKING OF THE LENS AND WILL VOID THE WARRANTY.

ROOF PANEL, NOT SHOWN FOR CLARITY

LIGHTWEIGHT ROOF CURB INSTALLATION

HR3 ROOF
FOR USE WITH PNEUMATIC DORIES AND PNEUMATIC SMOKE VENTS ONLY