

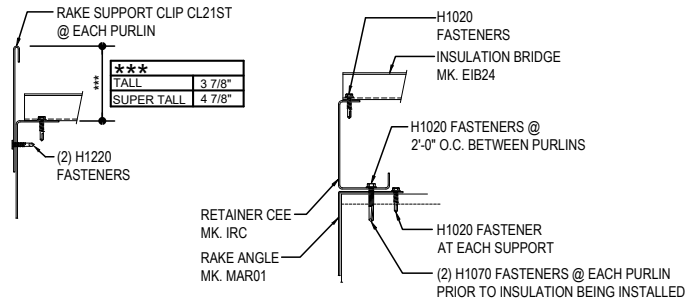
RAKE EXTENSIONS & EAVE EXTENSIONS / CANOPY DETAILS

- FO2010-ABC - RAKE EXT W.O. SOFFIT
 - FO2015-ABC - RAKE EXT with JOIST W.O. SOFFIT and IWP
 - FO2020-ABC - RAKE EXT with PURLINS and SOFFIT PANELS
 - FO2050-ABC - RAKE EXT with SOFFIT
 - FO2052-ABC - RAKE EXT with SOFFIT
 - FO2054-ABC - RAKE EXT W.O. SOFFIT
 - FO2320-ABC - LOW EAVE CANOPY GUTTER with WALL PANELS NO SOFFIT
 - FO2321-ABC - LOW EAVE CANOPY SIMPLE EAVE TRIM with WALL PANELS
 - FO2322-ABC - LOW EAVE CANOPY SCULP TRIM with WALL PANELS NO SOFFIT
 - FO2610-ABC - RAKE EXTENSION with PURLINS and IWP W.O. SOFFIT
 - FO2615-ABC - RAKE EXTENSION with IWP W.O. SOFFIT
 - FO2620-ABC - RAKE EXTENSION with SOFFIT and IWP
 - FO2720-ABC - LOW EAVE CANOPY GUTTER with IWP NO SOFFIT
 - FO2721-ABC - LOW EAVE CANOPY SIMPLE EAVE TRIM with IWP
 - FO2722-ABC - LOW EAVE CANOPY SCULP TRIM with IWP NO SOFFIT
-

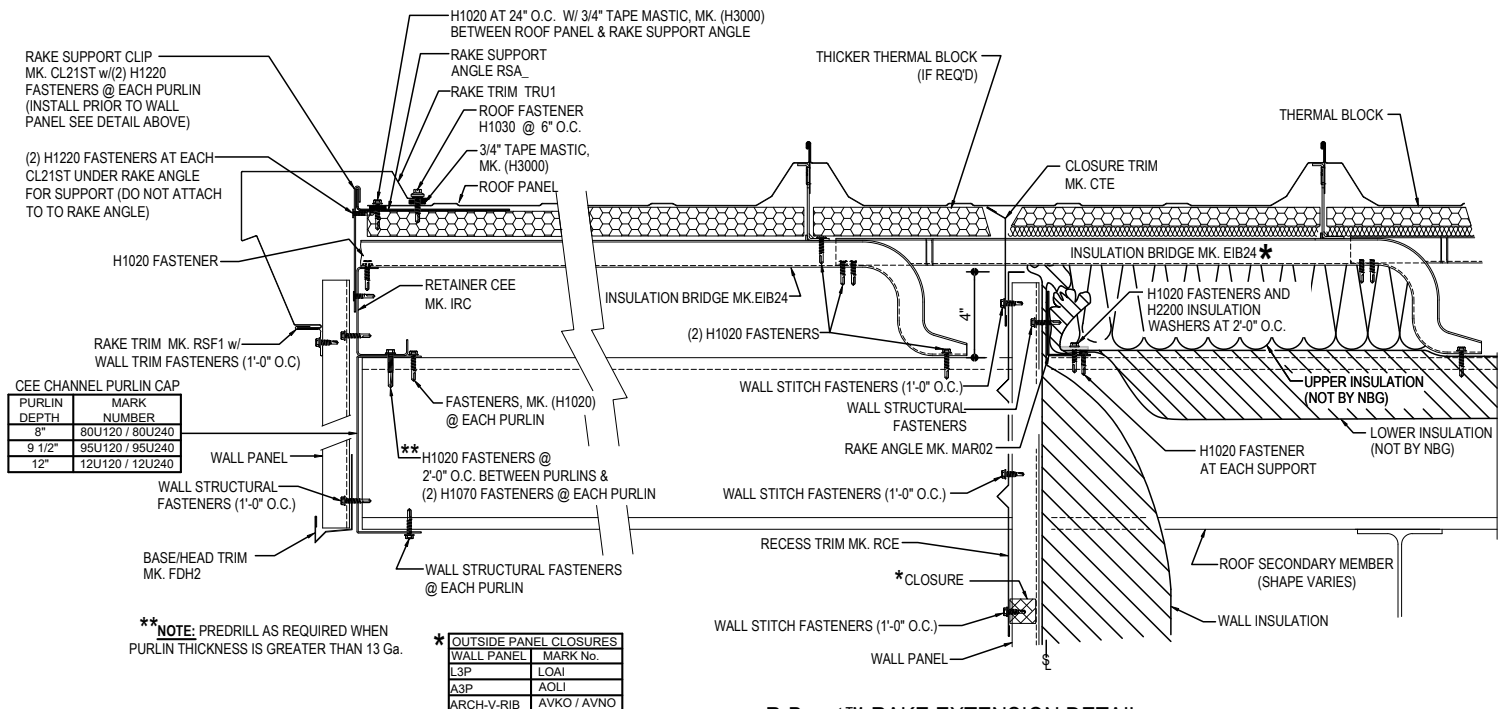
FO2010 - RAKE EXTENSION DETAIL W/O SOFFIT PANELS

[Download the DWG file by clicking here.](#)

ERECTOR NOTE: *
STARTING RAKE CONDITION IS SHOWN. BRIDGE PREPARATION WILL VARY BETWEEN THE STARTING AND ENDING RAKES, SEE BRIDGE INSTALLATION DETAILS FOR SPECIFIC BRIDGE REQUIREMENTS.



ALT. CL21ST SUPPORT CLIP INSTALLATION DETAIL
USED WHEN WALL PANELS ARE INSTALLED FIRST



R-Boost™ RAKE EXTENSION DETAIL
RAKE EXTENSION DETAIL w/ STANDARD WALL PANELS AND OPEN SOFFIT

FO2010

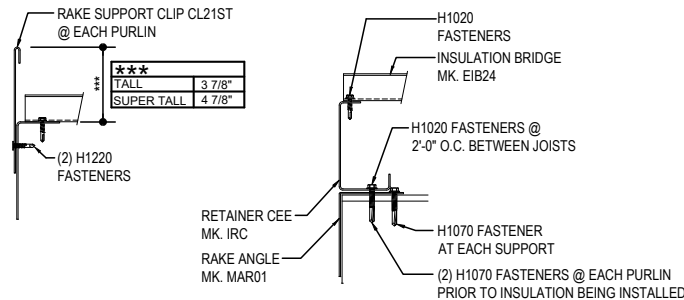
Detailer Notes:

- 1) REQUIRED ON ALL R-Boost™ PROJECTS.
- 2) THICKER THERMAL BLOCKS MAY NEED A SPECIAL PURCHASE REQUEST.
- 3) DEFAULT OPTION FOR WALL CLOSURES IS SHOWN AS BEING REQUIRED. DETAILER MUST MANUALLY REMOVE ILLUSTRATIONS IF NEEDED.

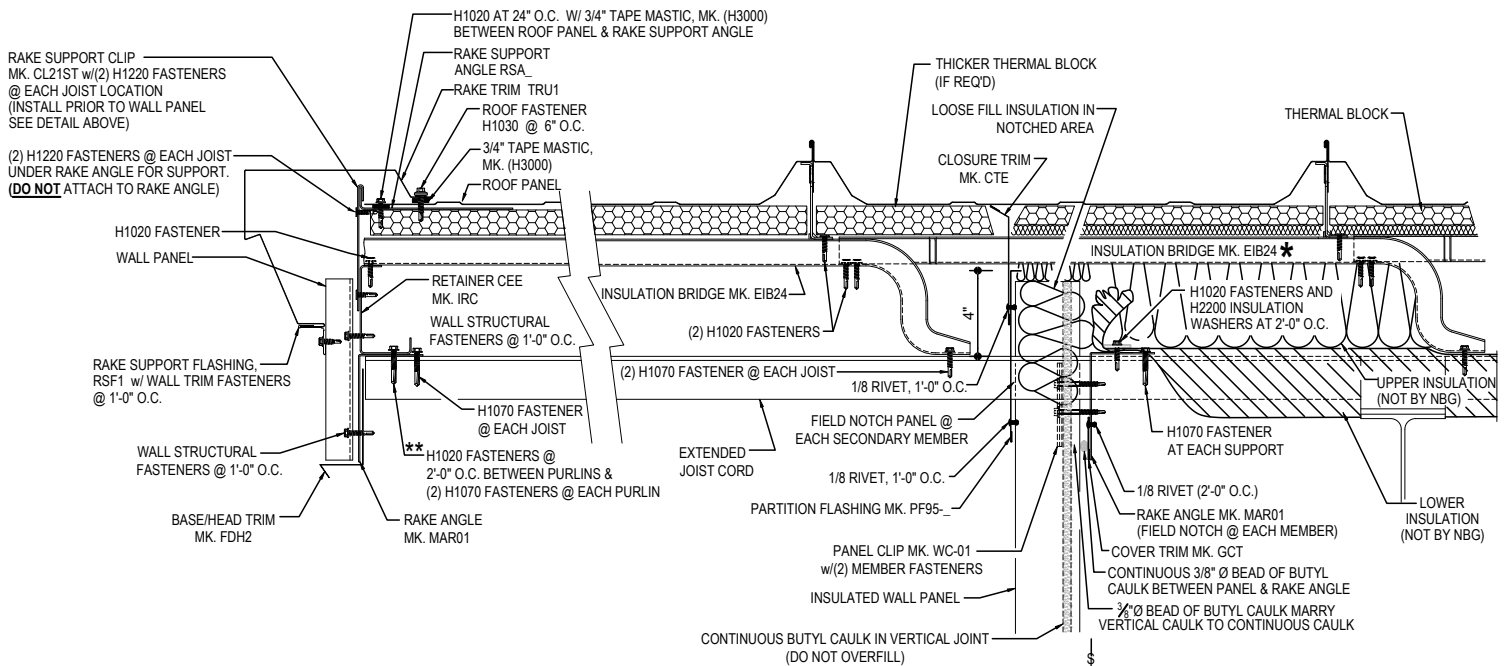
FO2015 - RAKE EXTENSION DETAIL w/ JOIST w/o SOFFIT, & INSULATION WALL PANELS

[Download the DWG file by clicking here.](#)

ERECTOR NOTE: *
STARTING RAKE CONDITION IS SHOWN. BRIDGE PREPERATION WILL VARY BETWEEN THE STARTING AND ENDING RAKES, SEE BRIDGE INSTALLATION DETAILS FOR SPECIFIC BRIDGE REQUIREMENTS.



ALT. CL21ST SUPPORT CLIP INSTALLATION DETAIL
USED WHEN WALL PANELS ARE INSTALLED FIRST



R-Boost™ RAKE EXTENSION DETAIL

RAKE EXTENSION DETAIL w/ WALL PANELS, JOIST AND OPEN SOFFIT

FO2015

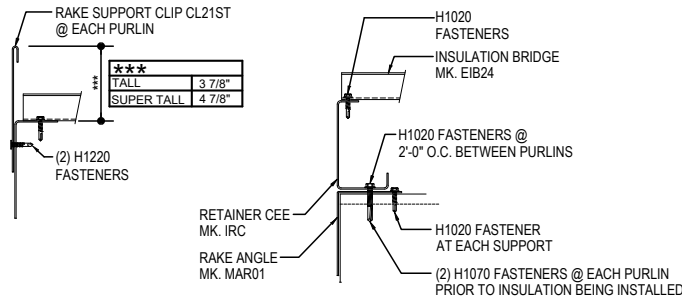
Detailer Notes:

- 1) REQUIRED ON ALL R-Boost™ PROJECTS.
- 2) THICKER THERMAL BLOCKS MAY NEED A SPECIAL PURCHASE REQUEST.
- 3) DEFAULT OPTION FOR WALL CLOSURES IS SHOWN AS BEING REQUIRED. DETAILER MUST MANUALLY REMOVE ILLUSTRATIONS IF NEEDED.

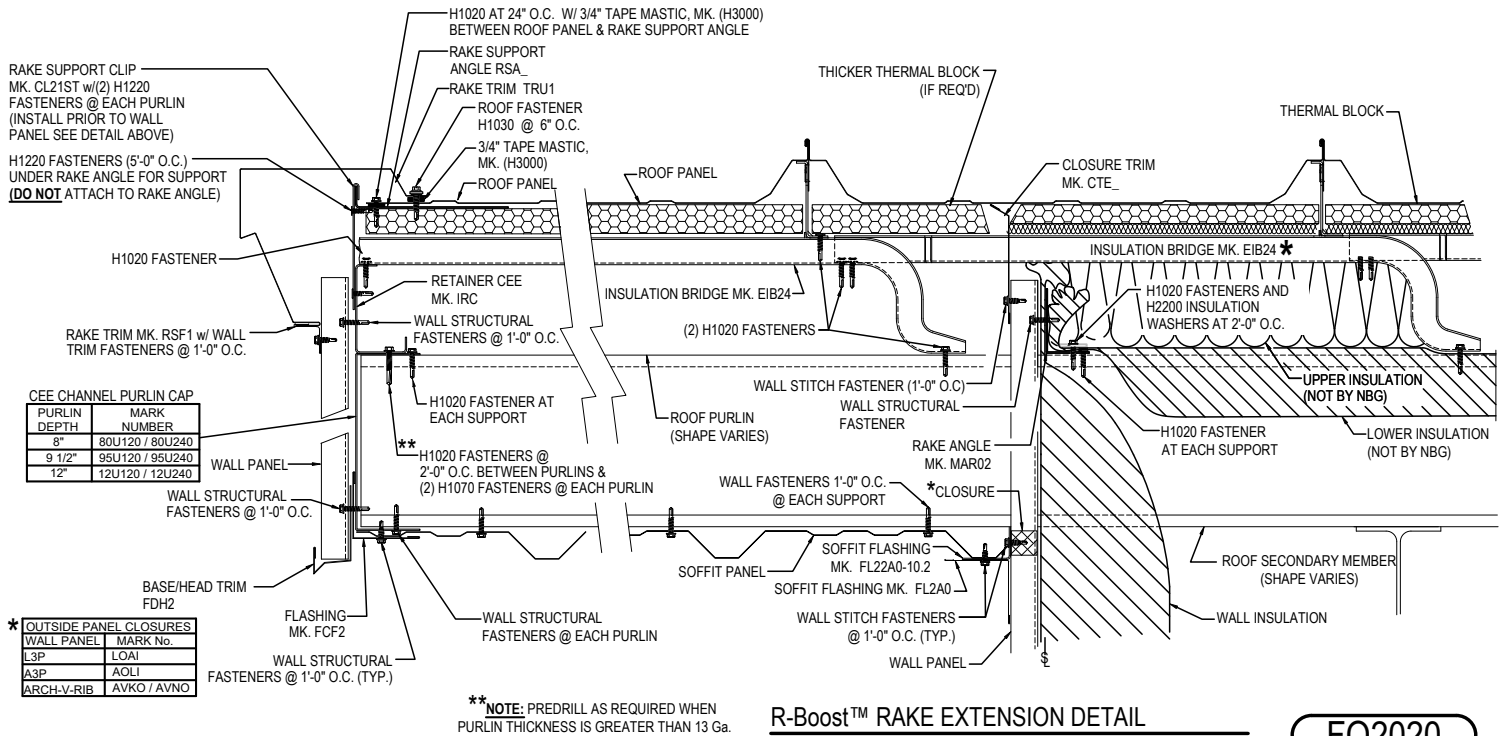
FO2020 - RAKE EXTENSION DETAIL W/ PURLINS & SOFFIT PANELS

[Download the DWG file by clicking here.](#)

ERECTOR NOTE: *
STARTING RAKE CONDITION IS SHOWN. BRIDGE PREPERATION WILL VARY BETWEEN THE STARTING AND ENDING RAKES, SEE BRIDGE INSTALLATION DETAILS FOR SPECIFIC BRIDGE REQUIREMENTS.



ALT. CL21ST SUPPORT CLIP INSTALLATION DETAIL
USED WHEN WALL PANELS ARE INSTALLED FIRST



R-Boost™ RAKE EXTENSION DETAIL
RAKE EXTENSION DETAIL w/ STANDARD WALL PANELS AND SOFFIT

FO2020

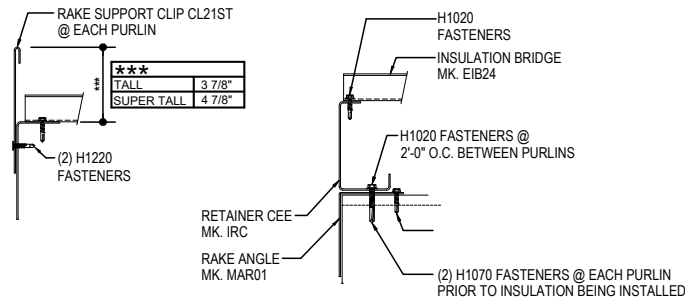
Detailer Notes:

- 1) REQUIRED ON ALL R-Boost™ PROJECTS.
- 2) THICKER THERMAL BLOCKS MAY NEED A SPECIAL PURCHASE REQUEST.
- 3) DEFAULT OPTION FOR WALL CLOSURES IS SHOWN AS BEING REQUIRED. DETAILER MUST MANUALLY REMOVE ILLUSTRATIONS IF NEEDED.

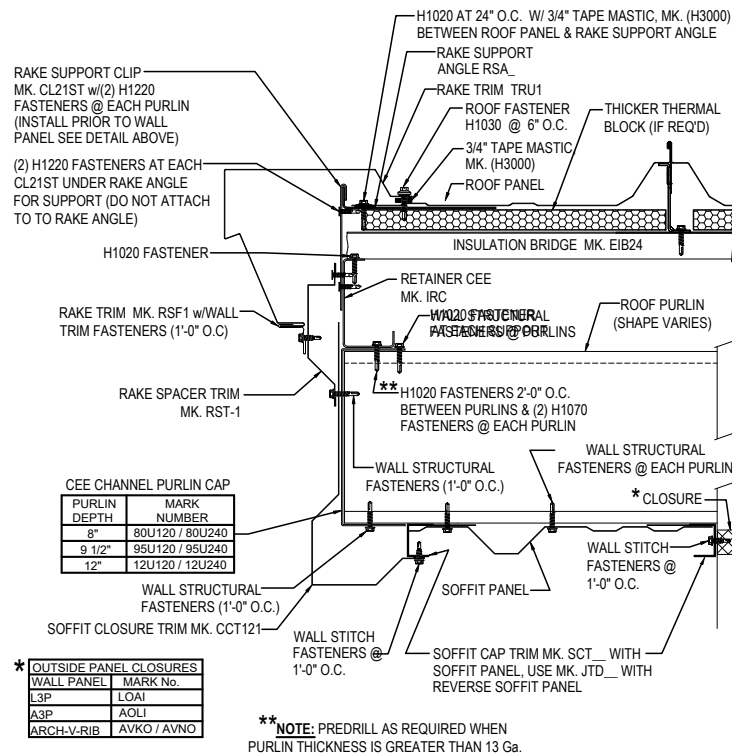
FO2050 - RAKE EXTENSION DETAIL W/ SOFFIT

[Download the DWG file by clicking here.](#)

ERECTOR NOTE: *
STARTING RAKE CONDITION IS SHOWN. BRIDGE PREPERATION WILL VARY BETWEEN THE STARTING AND ENDING RAKES, SEE BRIDGE INSTALLATION DETAILS FOR SPECIFIC BRIDGE REQUIREMENTS.



ALT. CL21ST SUPPORT CLIP INSTALLATION DETAIL
USED WHEN WALL PANELS ARE INSTALLED FIRST



**NOTE: PREDRILL AS REQUIRED WHEN PURLIN THICKNESS IS GREATER THAN 13 Ga.

R-Boost™ PURLIN RAKE EXTENSION W/ SOFFIT
SOFFIT CLOSURE DETAIL

FO2050

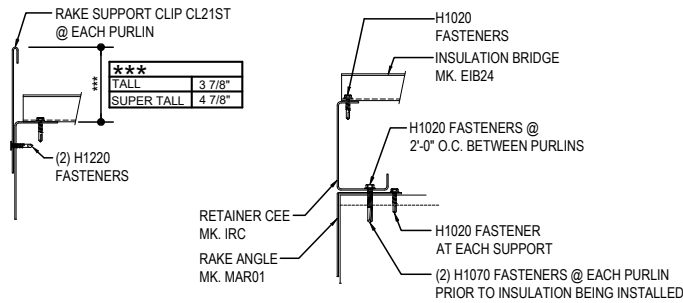
Detailer Notes:

- 1) REQUIRED ON ALL R-Boost™ PROJECTS.
- 2) THICKER THERMAL BLOCKS MAY NEED A SPECIAL PURCHASE REQUEST.
- 3) DEFAULT OPTION FOR WALL CLOSURES IS SHOWN AS BEING REQUIRED. DETAILER MUST MANUALLY REMOVE ILLUSTRATIONS IF NEEDED.

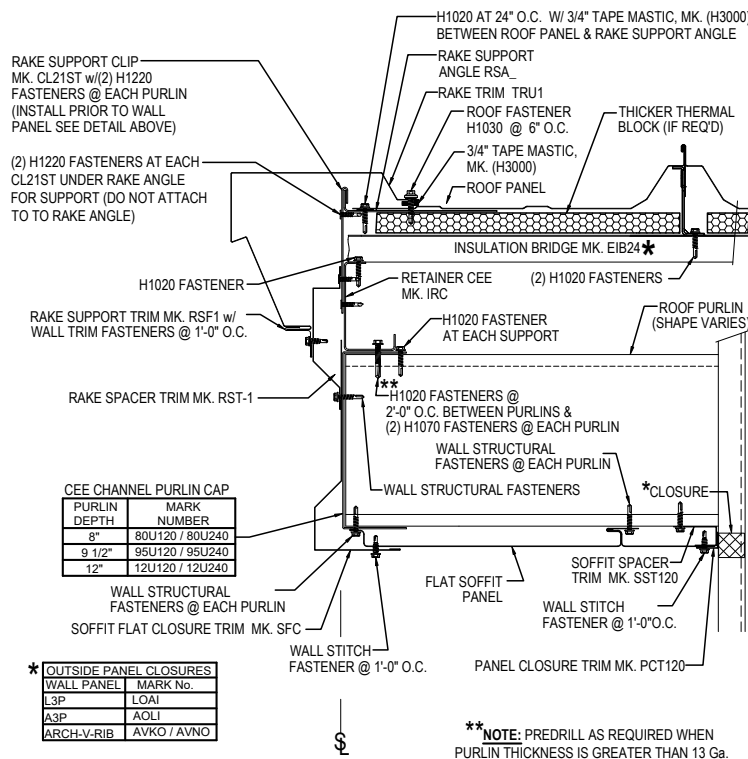
FO2052 - RAKE EXTENSION DETAIL W/ SOFFIT

[Download the DWG file by clicking here.](#)

ERECTOR NOTE: *
STARTING RAKE CONDITION IS SHOWN. BRIDGE PREPERATION WILL VARY BETWEEN THE STARTING AND ENDING RAKES, SEE BRIDGE INSTALLATION DETAILS FOR SPECIFIC BRIDGE REQUIREMENTS.



ALT. CL21ST SUPPORT CLIP INSTALLATION DETAIL
USED WHEN WALL PANELS ARE INSTALLED FIRST



PURLIN RAKE EXTENSION W/ SOFFIT
SOFFIT CLOSURE DETAIL FOR FLAT SOFFIT

FO2052

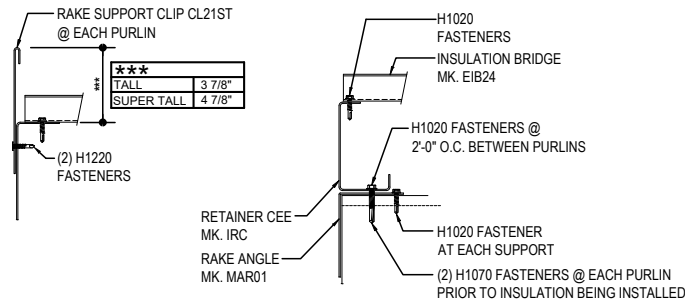
Detailer Notes:

- 1) REQUIRED ON ALL R-Boost™ PROJECTS.
- 2) THICKER THERMAL BLOCKS MAY NEED A SPECIAL PURCHASE REQUEST.
- 3) DEFAULT OPTION FOR WALL CLOSURES IS SHOWN AS BEING REQUIRED. DETAILER MUST MANUALLY REMOVE ILLUSTRATIONS IF NEEDED.

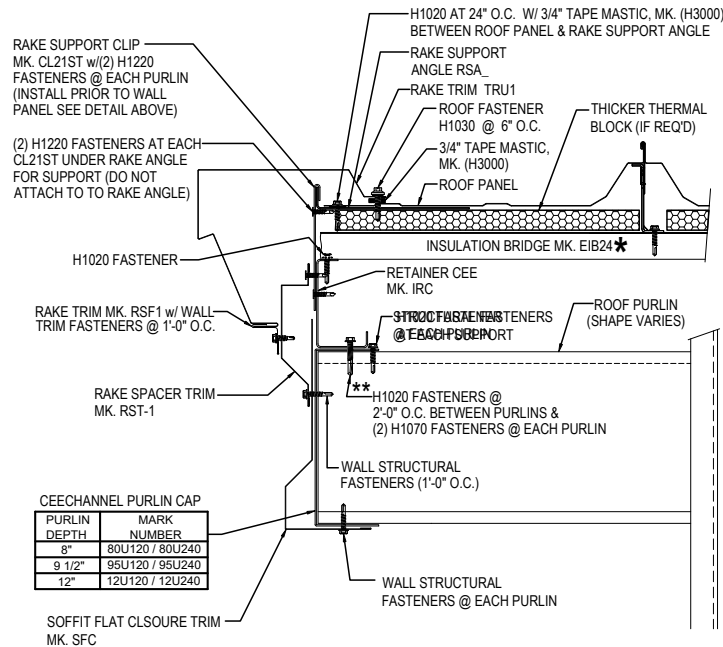
FO2054 - RAKE EXTENSION DETAIL W/O SOFFIT

[Download the DWG file by clicking here.](#)

ERECTOR NOTE: *
STARTING RAKE CONDITION IS SHOWN. BRIDGE PREPERATION WILL VARY BETWEEN THE STARTING AND ENDING RAKES, SEE BRIDGE INSTALLATION DETAILS FOR SPECIFIC BRIDGE REQUIREMENTS.



ALT. CL21ST SUPPORT CLIP INSTALLATION DETAIL
USED WHEN WALL PANELS ARE INSTALLED FIRST



**NOTE: PREDRILL AS REQUIRED WHEN PURLIN THICKNESS IS GREATER THAN 13 Ga.

PURLIN RAKE EXTENSION W/O SOFFIT
WITHOUT SOFFIT CLOSURE DETAIL

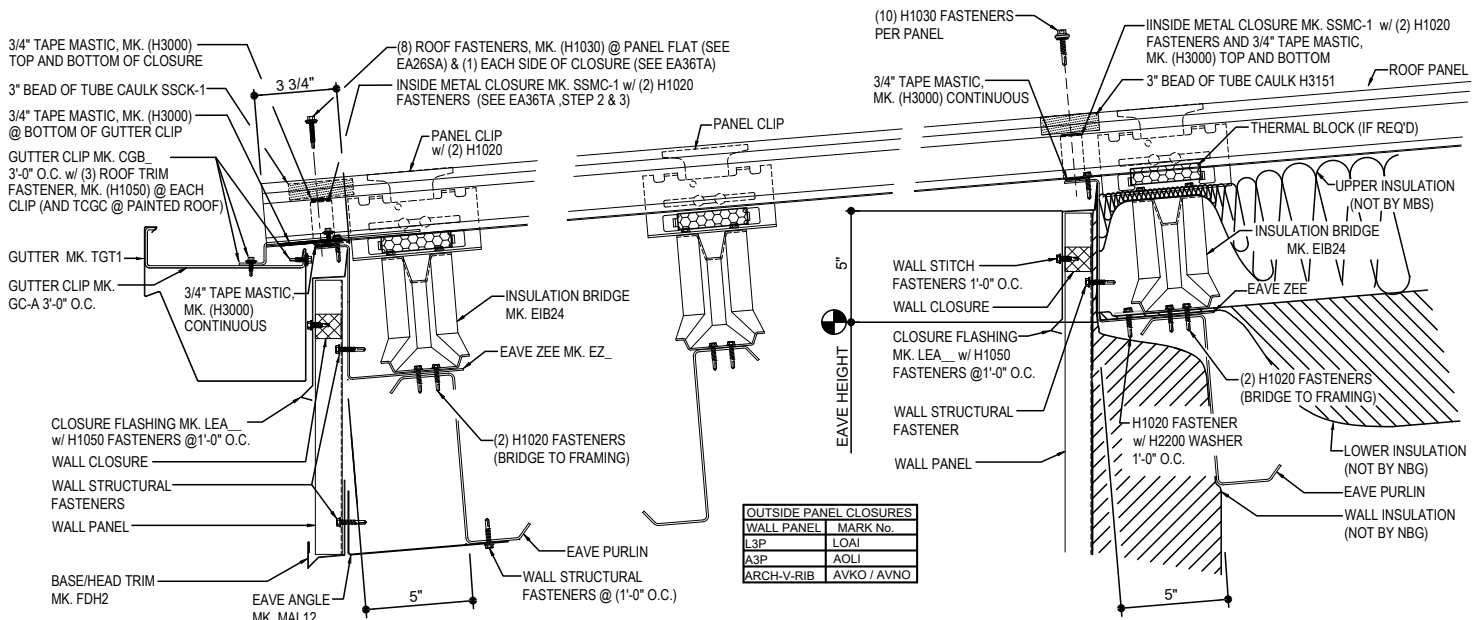
FO2054

Detailer Notes:

- 1) REQUIRED ON ALL R-Boost™ PROJECTS.
- 2) THICKER THERMAL BLOCKS MAY NEED A SPECIAL PURCHASE REQUEST.
- 3) DEFAULT OPTION FOR WALL CLOSURES IS SHOWN AS BEING REQUIRED. DETAILER MUST MANUALLY REMOVE ILLUSTRATIONS IF NEEDED.

FO2320 - LOW EAVE CANOPY DETAIL, EAVE GUTTER w/WALL PANELS, NO SOFFIT

[Download the DWG file by clicking here.](#)



OUTSIDE PANEL CLOSURES	
WALL PANEL	MARK No.
L3P	LOAI
A3P	AOLI
ARCH-V-RIB	AVKO / AVNO

R-Boost™ LOW EAVE CANOPY DETAIL

LOW EAVE CANOPY DETAIL, EAVE GUTTER w/ WALL PANELS, NO SOFFIT

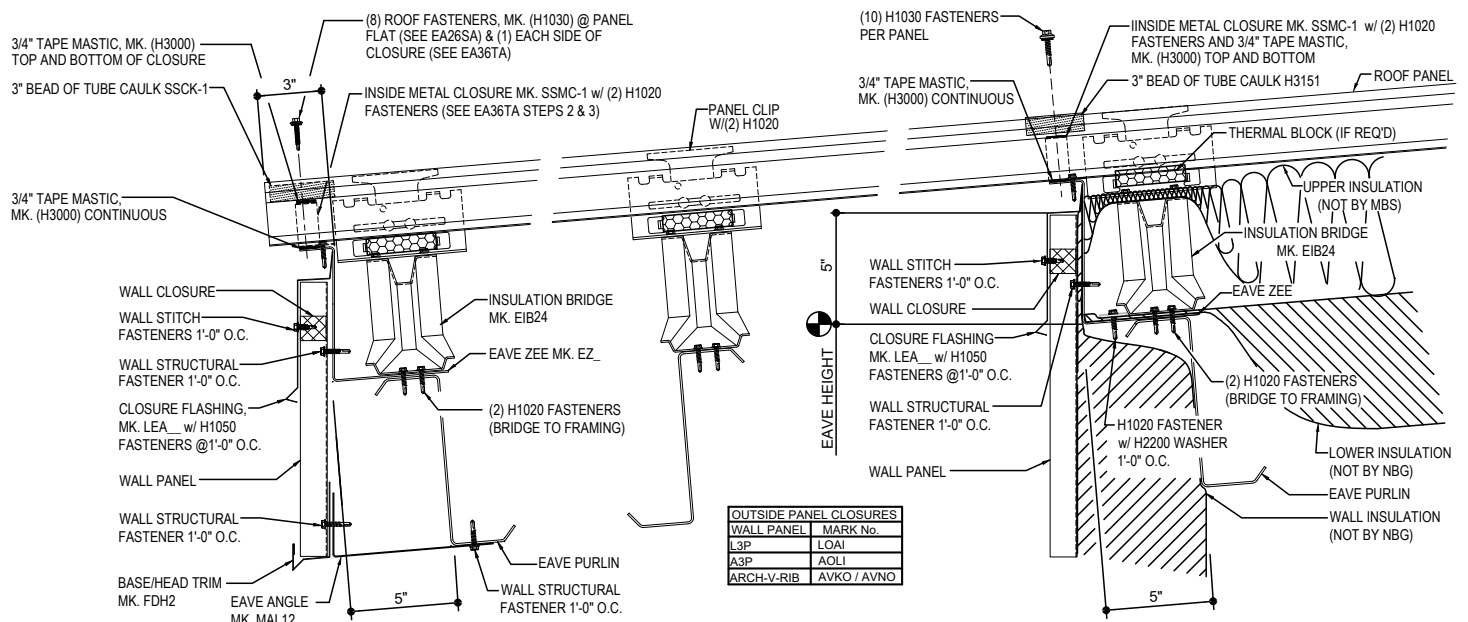
FO2320

Detailer Notes:

- 1) Detailer must remove closure notations on detail, when Wall Closures are not required per contract.
- 2) The sloped leg of the 'CFE' trim cannot extend past the vertical leg of the Eave Zee. This is to avoid the trim fouling with the panel clip.

FO2321 - LOW EAVE CANOPY DETAIL, SIMPLE EAVE TRIM w/WALL PANELS

[Download the DWG file by clicking here.](#)



OUTSIDE PANEL CLOSURES	
WALL PANEL	MARK No.
L3P	LOAI
A3P	AOLI
ARCH-V-RIB	AVKO / AVNO

R-Boost™ LOW EAVE CANOPY DETAIL

LOW EAVE CANOPY DETAIL, SIMPLE TRIM w/ WALL PANELS, NO SOFFIT

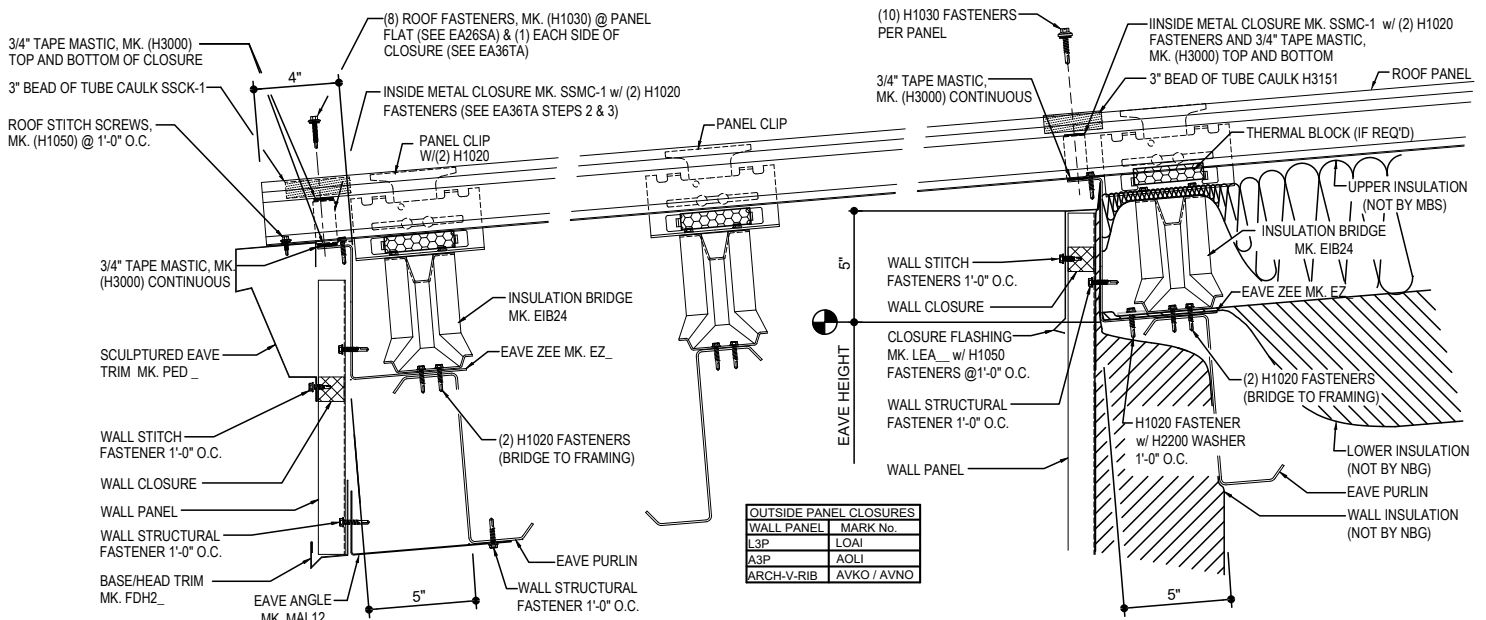
FO2321

Detailer Notes:

- 1) Detailer must remove closure notations on detail, when Wall Closures are not required per contract.
- 2) The sloped leg of the 'CFE' trim cannot extend past the vertical leg of the Eave Zee. This is to avoid the trim fouling with the panel clip.

FO2322 - LOW EAVE CANOPY DETAIL, SCULPTURED TRIM w/WALL PANELS, NO SOFFIT

[Download the DWG file by clicking here.](#)



R-Boost™ LOW EAVE CANOPY DETAIL

LOW EAVE CANOPY DETAIL, SCULPTURED EAVE TRIM w/WALL PANELS, NO SOFFIT

FO2322

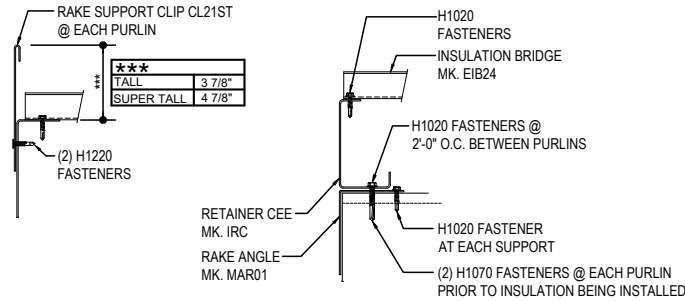
Detailer Notes:

- 1) Detailer must remove closure notations on detail, when Wall Closures are not required per contract.
- 2) The sloped leg of the 'CFE' trim cannot extend past the vertical leg of the Eave Zee. This is to avoid the trim fouling with the panel clip.

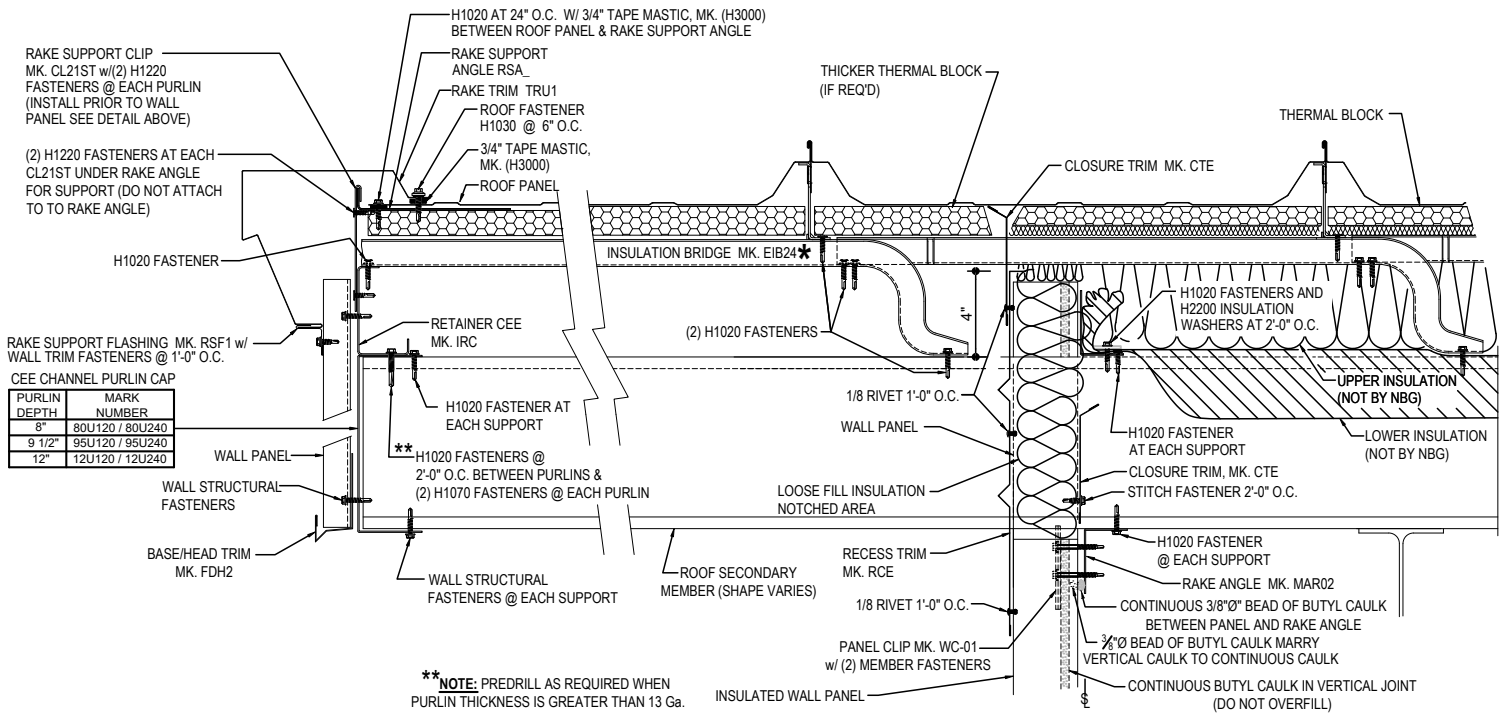
FO2610 - RAKE EXTENSION W/PURLINS, INSULATED WALL PANEL W/O SOFFIT

[Download the DWG file by clicking here.](#)

ERECTOR NOTE: *
STARTING RAKE CONDITION IS SHOWN. BRIDGE PREPARATION WILL VARY BETWEEN THE STARTING AND ENDING RAKES, SEE BRIDGE INSTALLATION DETAILS FOR SPECIFIC BRIDGE REQUIREMENTS.



ALT. CL21ST SUPPORT CLIP INSTALLATION DETAIL
USED WHEN WALL PANELS ARE INSTALLED FIRST



**** NOTE:** PREDRILL AS REQUIRED WHEN PURLIN THICKNESS IS GREATER THAN 13 Ga.

R-Boost™ RAKE EXTENSION DETAIL
RAKE EXTENSION DETAIL w/ INSULATED WALL PANELS AND OPEN SOFFIT

FO2610

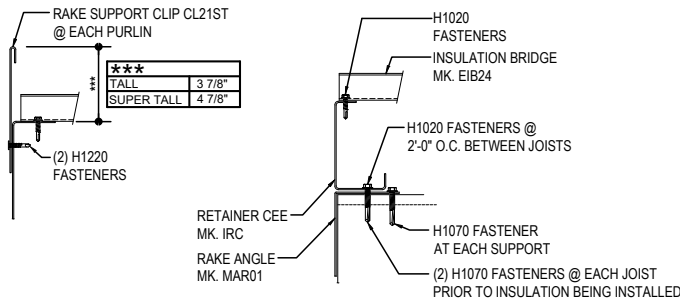
Detailer Notes:

- 1) REQUIRED ON ALL R-Boost™ PROJECTS.
- 2) THICKER THERMAL BLOCKS MAY NEED A SPECIAL PURCHASE REQUEST.
- 3) DEFAULT OPTION FOR WALL CLOSURES IS SHOWN AS BEING REQUIRED. DETAILER MUST MANUALLY REMOVE ILLUSTRATIONS IF NEEDED.

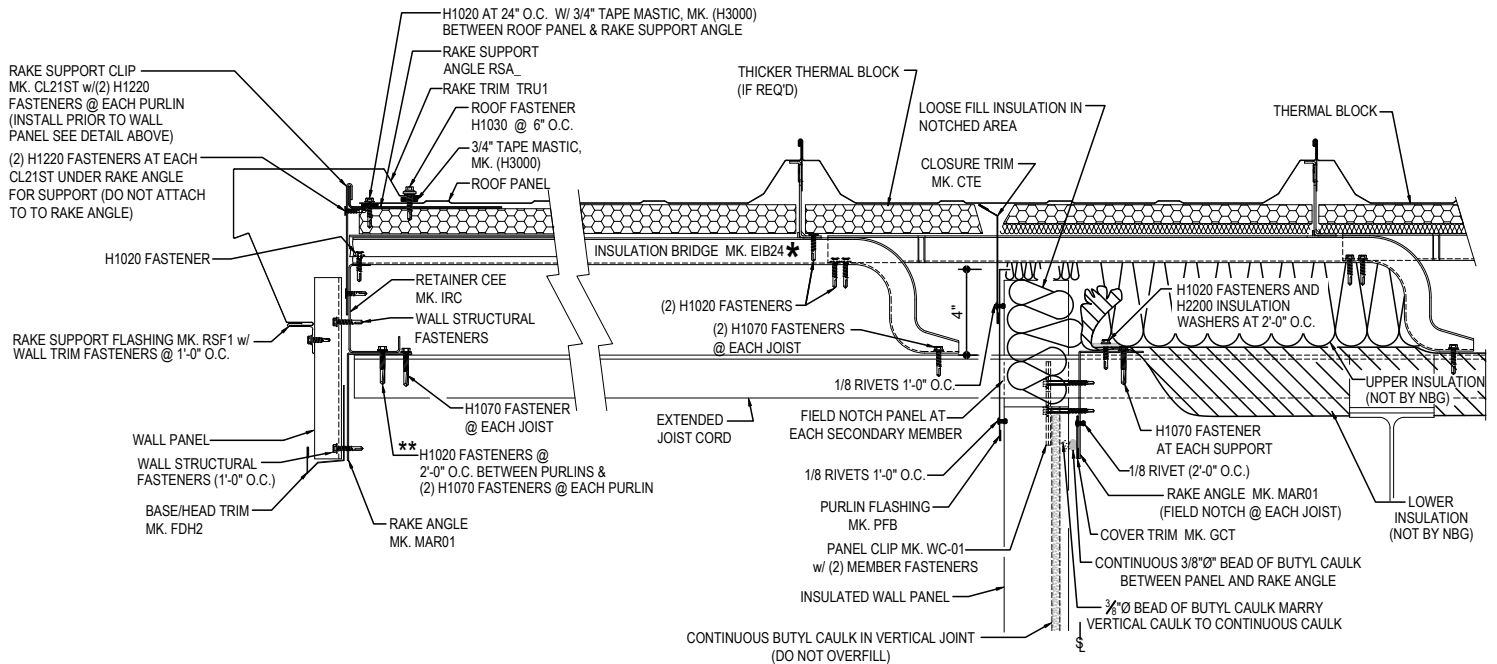
FO2615 - RAKE EXTENSION W/INSULATED WALL PANEL, ROOF JOIST W/O SOFFIT

[Download the DWG file by clicking here.](#)

ERECTOR NOTE: *
STARTING RAKE CONDITION IS SHOWN. BRIDGE PREPERATION WILL VARY BETWEEN THE STARTING AND ENDING RAKES, SEE BRIDGE INSTALLATION DETAILS FOR SPECIFIC BRIDGE REQUIREMENTS.



ALT. CL21ST SUPPORT CLIP INSTALLATION DETAIL
USED WHEN WALL PANELS ARE INSTALLED FIRST



** NOTE: PREDRILL AS REQUIRED WHEN PURLIN THICKNESS IS GREATER THAN 13 Ga.

R-Boost™ RAKE EXTENSION DETAIL
RAKE EXTENSION DETAIL w/ INSULATED WALL PANELS, JOIST AND OPEN SOFFIT

FO2615

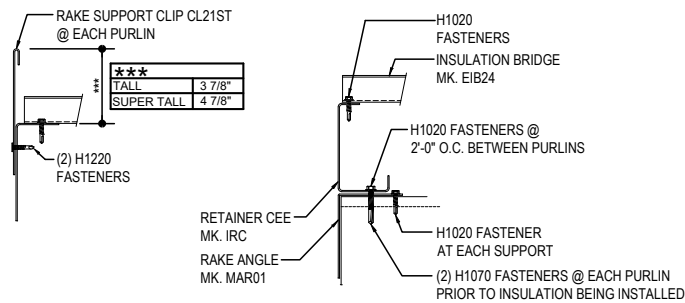
Detailer Notes:

- 1) REQUIRED ON ALL R-Boost™ PROJECTS.
- 2) THICKER THERMAL BLOCKS MAY NEED A SPECIAL PURCHASE REQUEST.
- 3) DEFAULT OPTION FOR WALL CLOSURES IS SHOWN AS BEING REQUIRED. DETAILER MUST MANUALLY REMOVE ILLUSTRATIONS IF NEEDED.

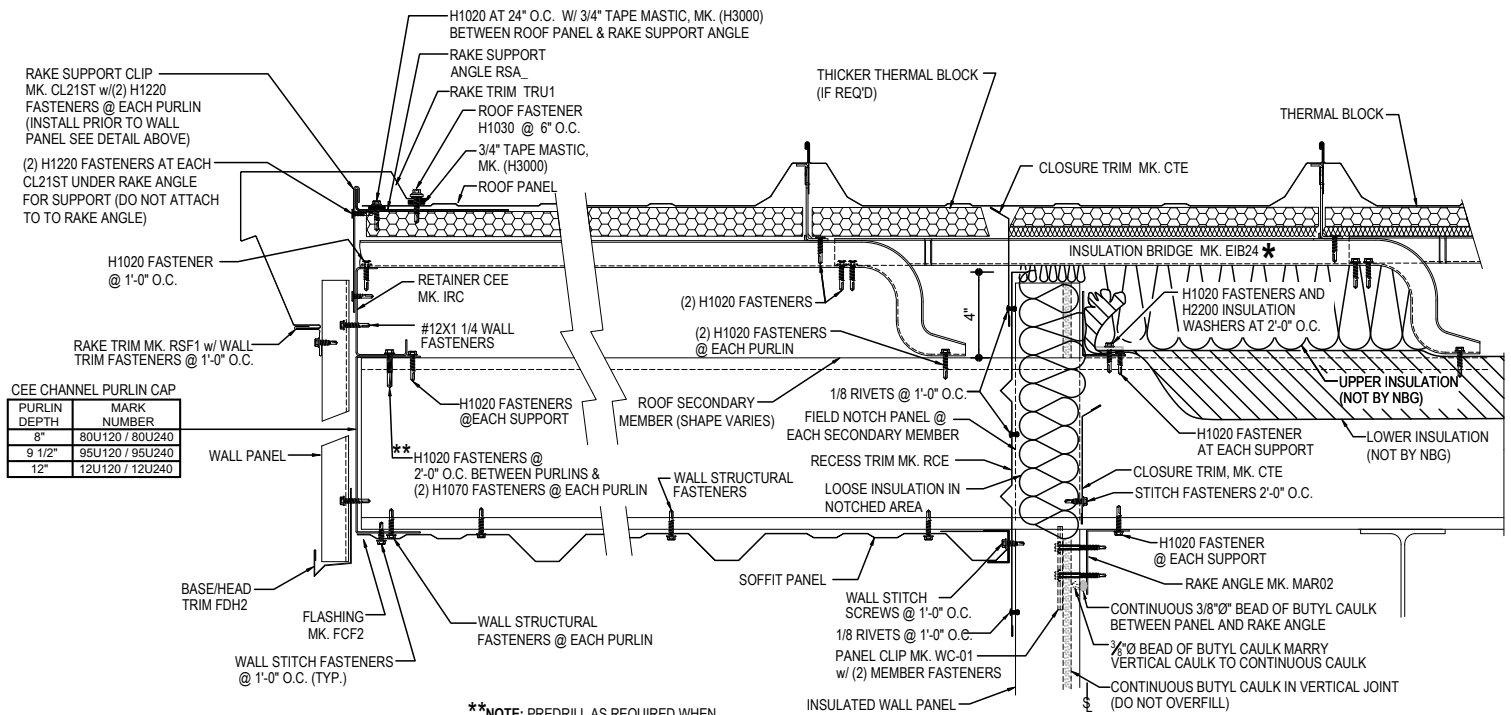
FO2620 - RAKE EXTENSION W/ SOFFIT & INSULATION WALL PANELS

[Download the DWG file by clicking here.](#)

ERECTOR NOTE: *
STARTING RAKE CONDITION IS SHOWN. BRIDGE PREPERATION WILL VARY BETWEEN THE STARTING AND ENDING RAKES, SEE BRIDGE INSTALLATION DETAILS FOR SPECIFIC BRIDGE REQUIREMENTS.



ALT. CL21ST SUPPORT CLIP INSTALLATION DETAIL
USED WHEN WALL PANELS ARE INSTALLED FIRST



**NOTE: PREDRILL AS REQUIRED WHEN PURLIN THICKNESS IS GREATER THAN 13 Ga.

R-Boost™ RAKE EXTENSION DETAIL
RAKE EXTENSION DETAIL w/ INSULATED WALL PANELS AND SOFFIT

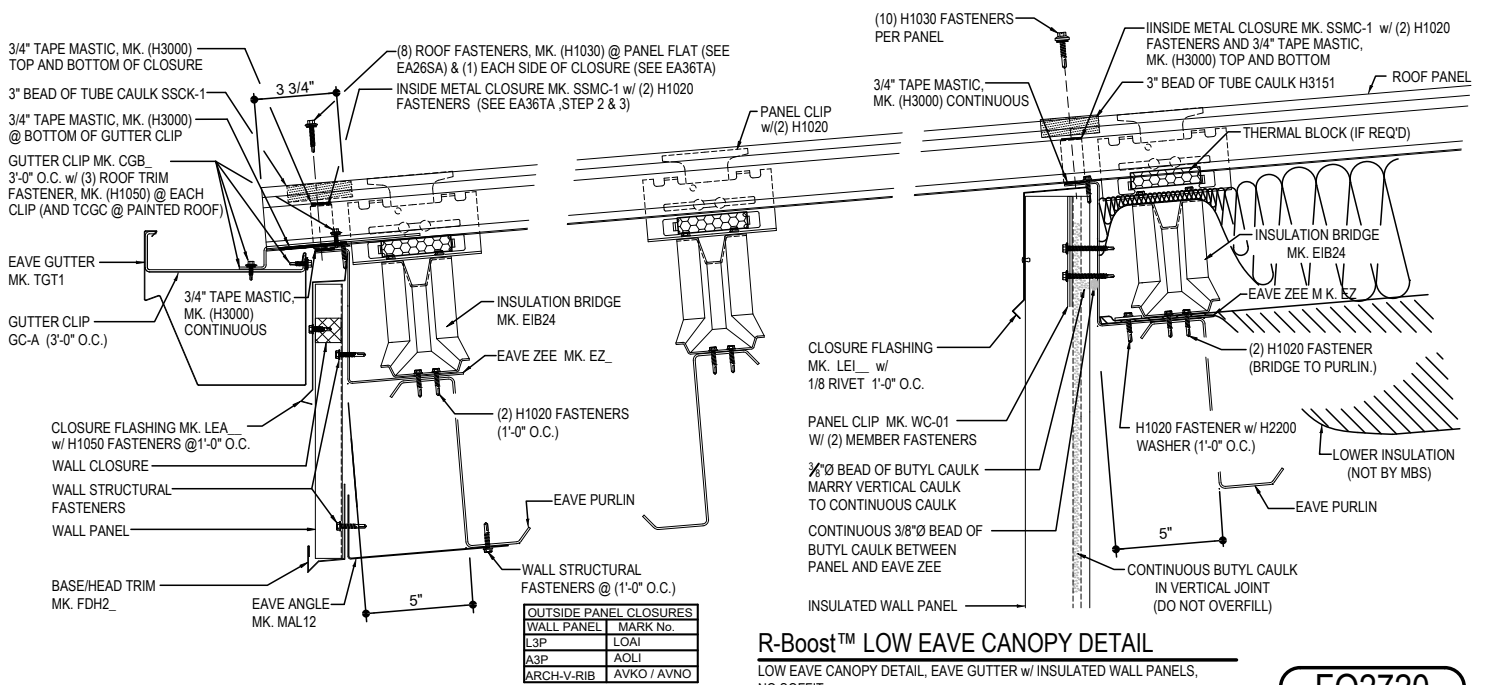
FO2620

Detailer Notes:

- 1) REQUIRED ON ALL R-Boost™ PROJECTS.
- 2) THICKER THERMAL BLOCKS MAY NEED A SPECIAL PURCHASE REQUEST.
- 3) DEFAULT OPTION FOR WALL CLOSURES IS SHOWN AS BEING REQUIRED. DETAILER MUST MANUALLY REMOVE ILLUSTRATIONS IF NEEDED.

FO2720 - LOW EAVE CANOPY DETAIL, EAVE GUTTER w/INSULATED WALL PANELS, NO SOFFIT

[Download the DWG file by clicking here.](#)



R-Boost™ LOW EAVE CANOPY DETAIL

LOW EAVE CANOPY DETAIL, EAVE GUTTER w/ INSULATED WALL PANELS, NO SOFFIT

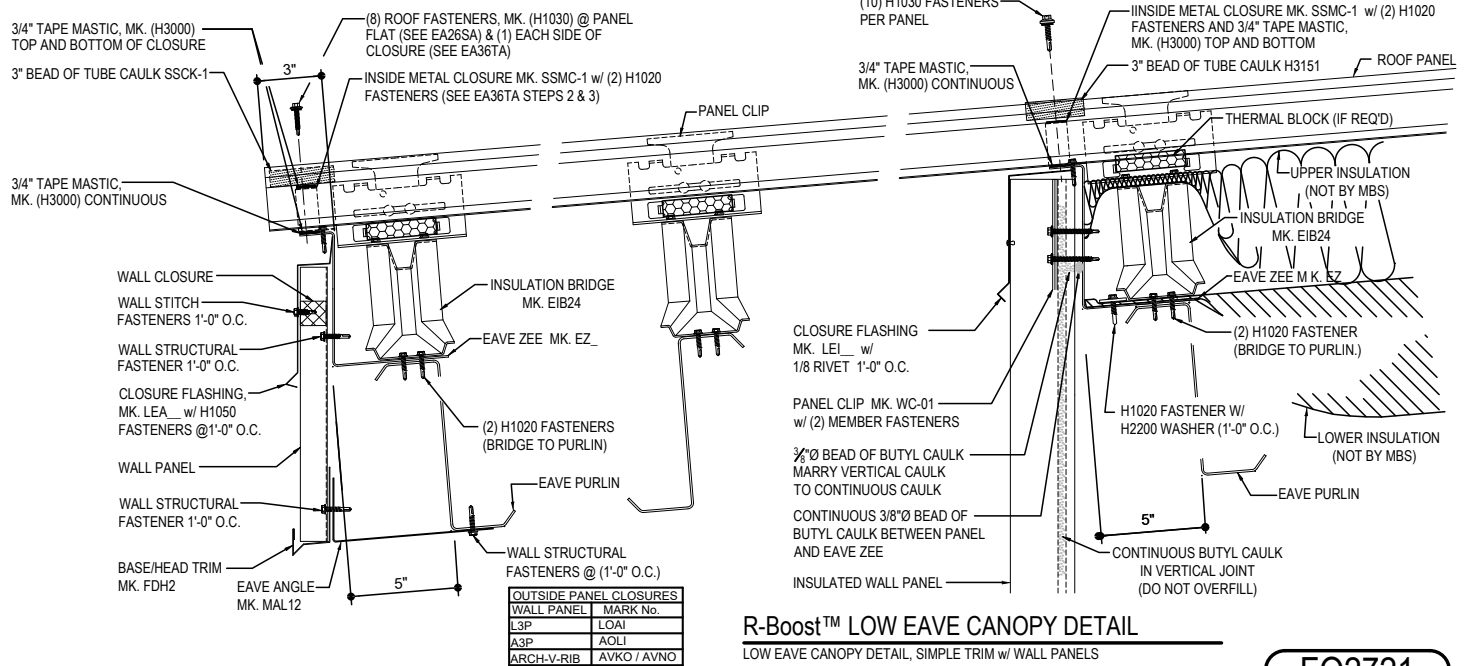
FO2720

Detailer Notes:

- 1) The sloped leg of the 'TXP' trim cannot extend past the vertical leg of the Eave Zee. This is to avoid the trim fouling with the panel clip.

FO2721 - LOW EAVE CANOPY DETAIL, SIMPLE EAVE TRIM w/INSULATED WALL PANELS

[Download the DWG file by clicking here.](#)



R-Boost™ LOW EAVE CANOPY DETAIL

LOW EAVE CANOPY DETAIL, SIMPLE TRIM w/ WALL PANELS

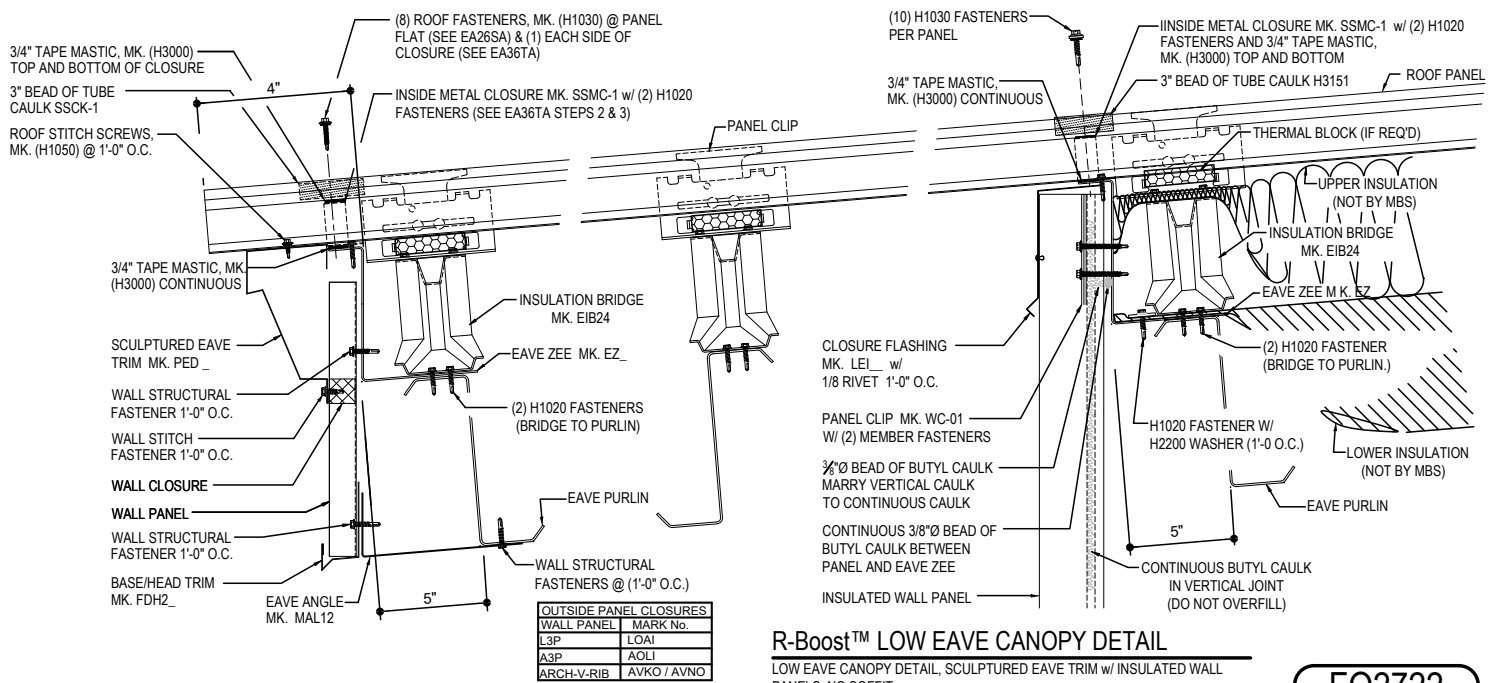
FO2721

Detailer Notes:

- 1) N/A

FO2722 - LOW EAVE CANOPY DETAIL, SCULPTURED TRIM w/INSULATED WALL PANELS, NO SOFFIT

[Download the DWG file by clicking here.](#)



FO2722

Detailer Notes:

1) N/A