

Product Manual - Mezzanine Framing

[GE70/AA, Safety Commitment](#)

[MF02/AA, Typical Mezzanine Framing Connection](#)

[MF04/AA, Typical Mezzanine Framing Connection](#)

[MF05/AA, Typical Mezzanine Framing Connection](#)

[MF06/AA, Typical Mezzanine Framing Connection](#)

[MF07/AA, Typical Mezzanine Framing Connection](#)

[MF10/AA, Mezzanine Bolt-Up Sequence](#)

[MZ05/AA, Bar Joist in Girt Line Connection](#)

[MZ06/AA, Bar Joist in Column Connection](#)

[MZSP/AA, Mezzanine Specifications](#)

Safety Commitment

GE70/AA

SAFETY NOTES:

THE METAL BUILDING SUPPLIER STRONGLY RECOMMENDS THAT SAFE WORKING CONDITIONS AND ACCIDENT PREVENTION PRACTICES BE THE TOP PRIORITY ON ANY JOB SITE.

LOCAL, STATE AND FEDERAL SAFETY AND HEALTH STANDARDS SHOULD ALWAYS BE FOLLOWED TO HELP ENSURE WORKER SAFETY.

MAKE CERTAIN ALL EMPLOYEES KNOW THE SAFEST AND MOST PRODUCTIVE WAY OF ERECTING A BUILDING. EMERGENCY TELEPHONE NUMBERS, LOCATIONS OF FIRST AID STATIONS AND EMERGENCY PROCEDURES SHOULD BE KNOWN TO ALL EMPLOYEES.

DAILY MEETINGS HIGHLIGHTING SAFETY PROCEDURES, THE USE OF HARD HATS, RUBBER SOLE SHOES FOR ROOF WORK, PROPER EQUIPMENT FOR HANDLING MATERIAL AND SAFETY NETS WHERE POSSIBLE ARE RECOMMENDED ERECTION PRACTICES.

THE METAL BUILDING SUPPLIER INTENDS THAT THESE DRAWINGS BE INTERPRETED AND ADMINISTERED WITH SOUND JUDGMENT CONSISTENT WITH GOOD SAFETY PRACTICES.

ALL SAFETY PRECAUTIONS, OSHA SAFETY REQUIREMENTS, OR ANY OTHER APPROPRIATE SAFETY REQUIREMENTS, CUSTOMARY OR STATUTORY, MUST BE ADHERED TO, TO ENSURE MAXIMUM WORKER SAFETY.

IF OIL OR OTHER SLIPPERY SUBSTANCES ARE SPILLED ON THE ROOF/DECK PANELS, WIPE THEM OFF IMMEDIATELY TO PREVENT SLIPPING OR FALLING.

YOU SHOULD MAINTAIN A FIRM, SAFE POSITION WHEN USING ANY TOOL.

YOU SHOULD MAINTAIN A CONSTANT AWARENESS OF YOUR LOCATION IN RELATION TO THE ROOF EDGE WHEN USING TOOLS AND MACHINES OR PERFORMING ANY OTHER FUNCTION ON THE ROOF AREA.

DO NOT UNDER ANY CIRCUMSTANCES STEP OR WALK ON THE SURFACE OF ANY FIBERGLASS SKYLIGHT. IF FOOT TRAFFIC IS NECESSARY OVER SKYLIGHT, USE WALK BOARDS THAT ARE PROPERLY SUPPORTED BY THE BUILDING PURLINS.

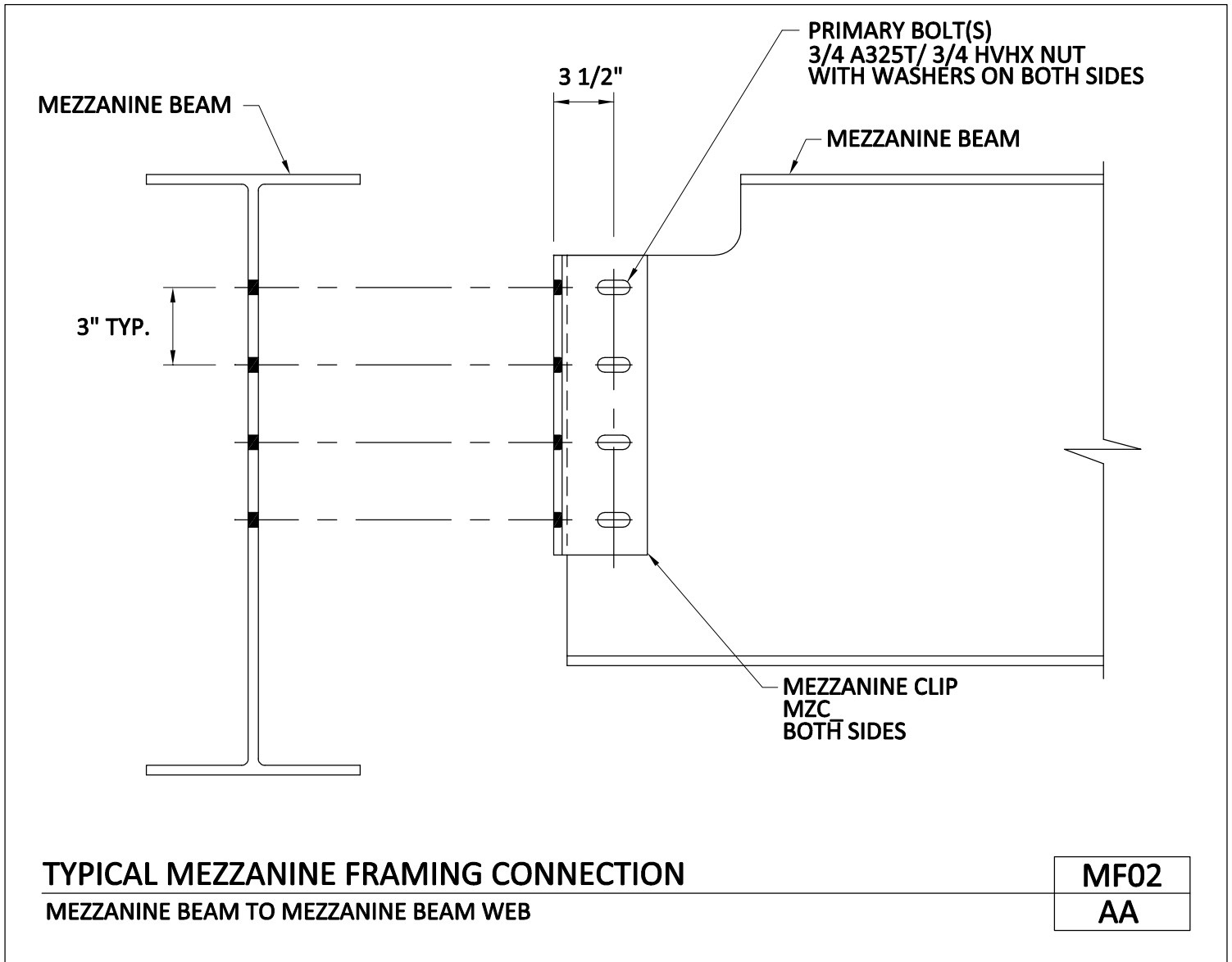
SAFETY COMMITMENT

GE70
AA

[Download the DWG file by clicking here.](#)

[To Section Index](#)

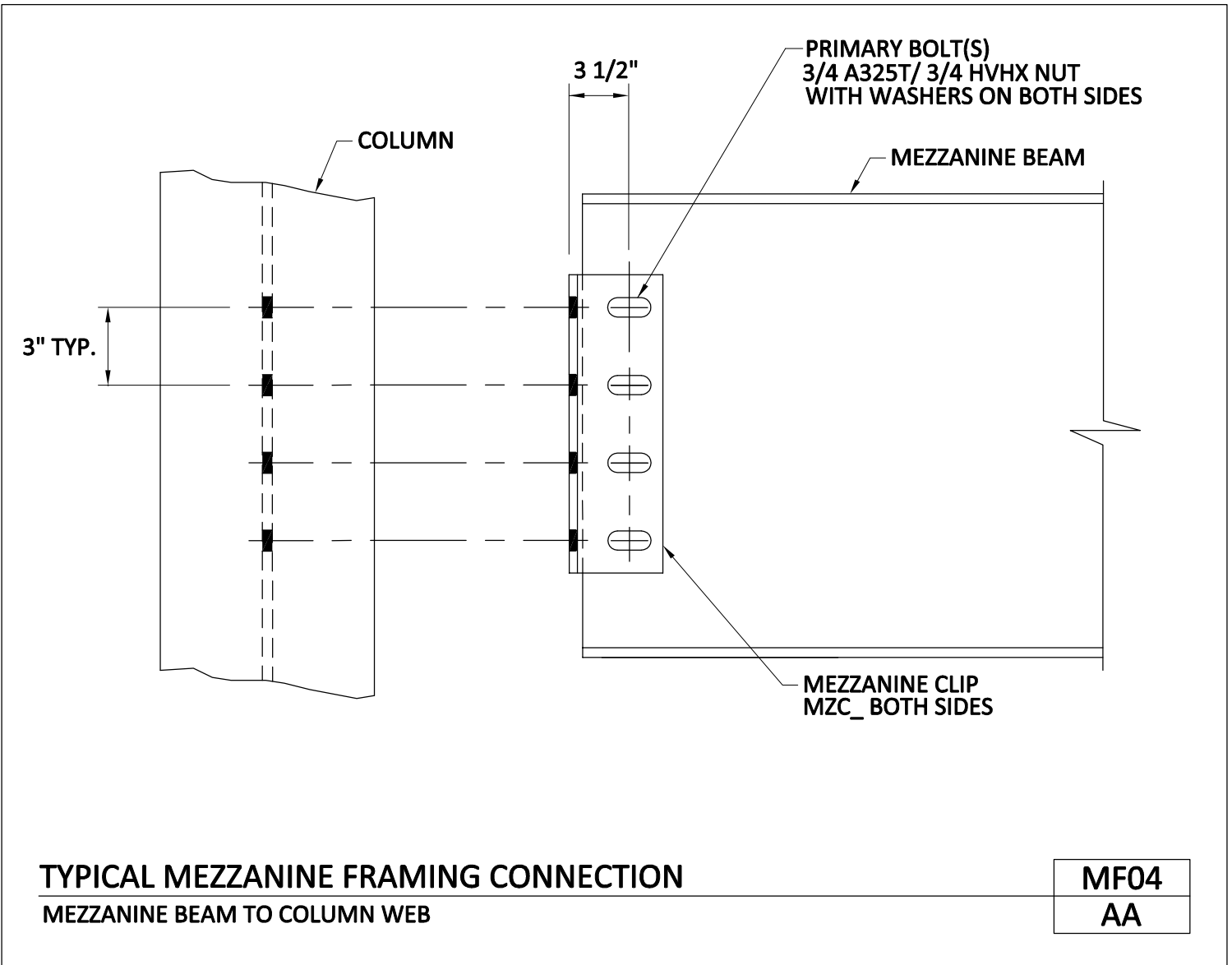
Typical Mezzanine Framing Connection
 Mezzanine Beam to Mezzanine Beam Web
 MF02/AA



[Download the DWG file by clicking here.](#)

[To Section Index](#)

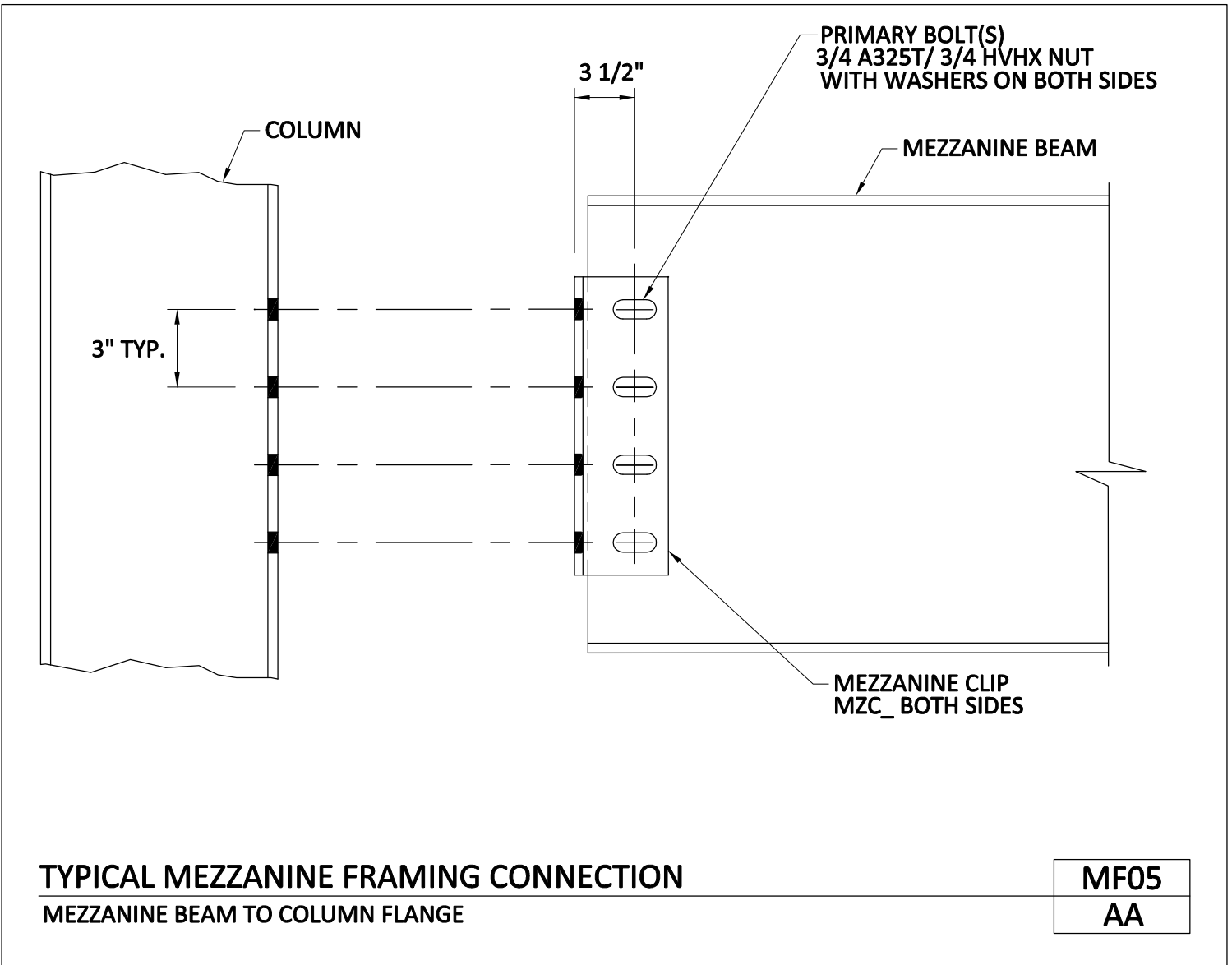
Typical Mezzanine Framing Connection
Mezzanine Beam to Column Web
MF04/AA



[Download the DWG file by clicking here.](#)

[To Section Index](#)

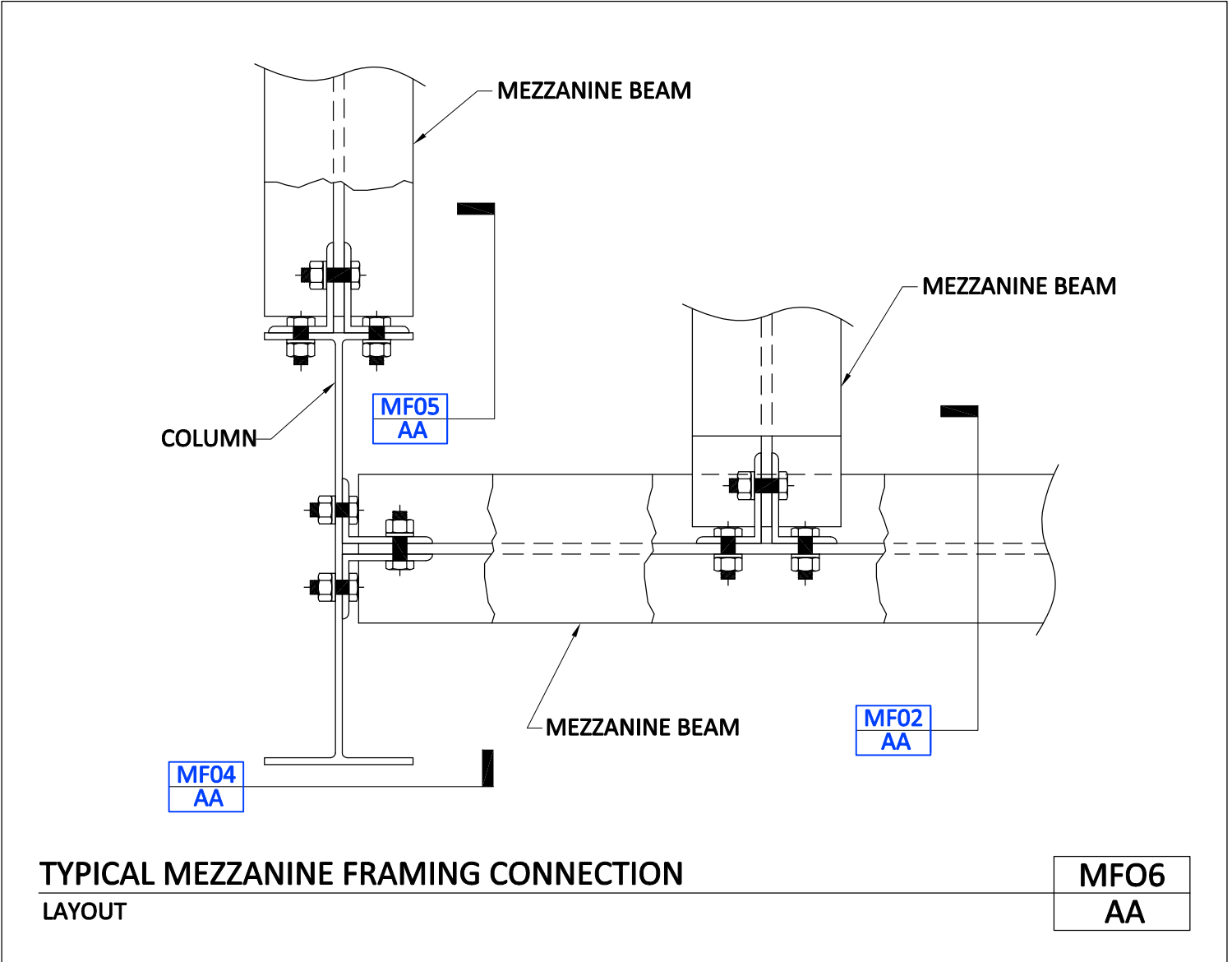
Typical Mezzanine Framing Connection
Mezzanine Beam to Column Flange
MF05/AA



[Download the DWG file by clicking here.](#)

[To Section Index](#)

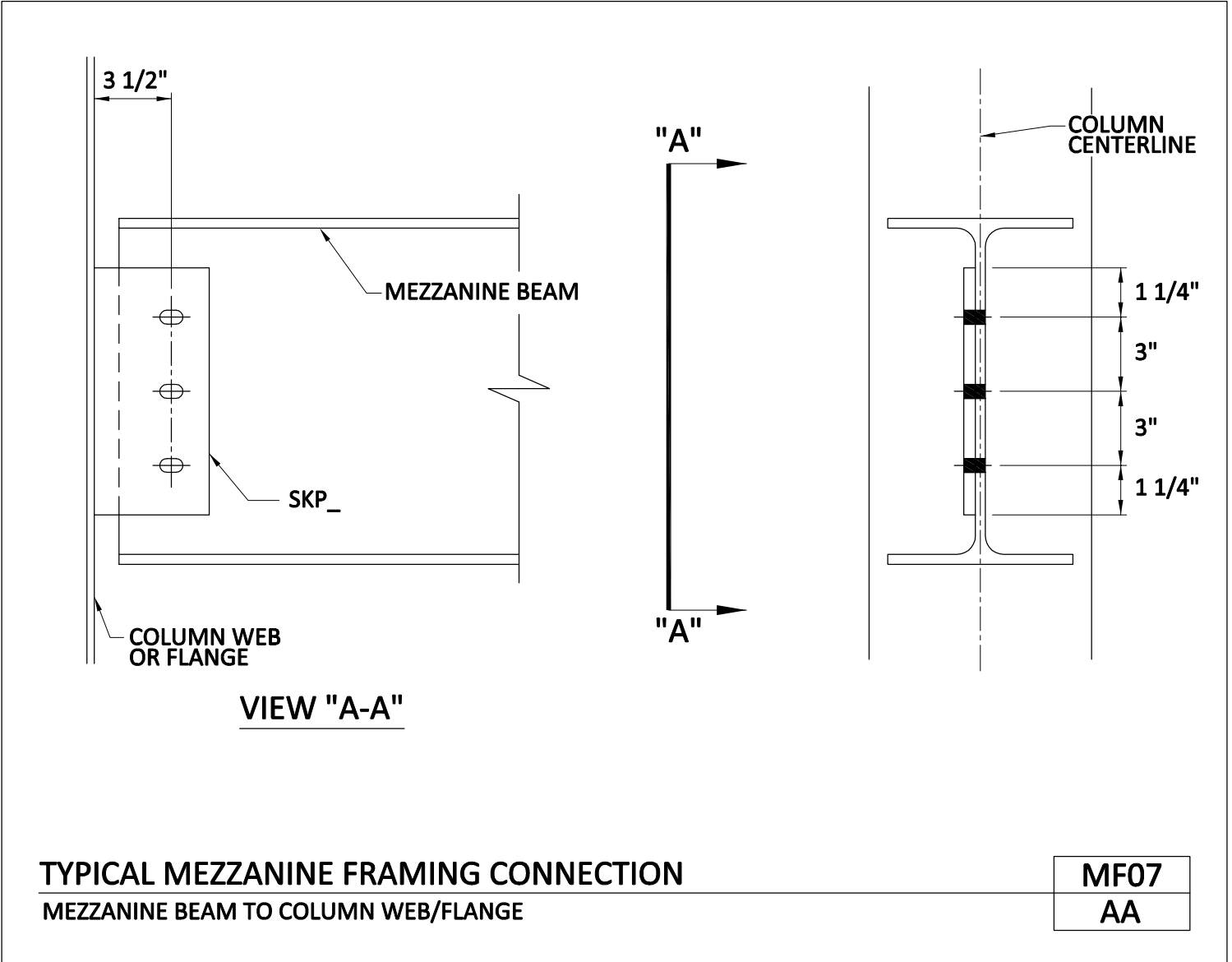
Typical Mezzanine Framing Connection
Layout
MF06/AA



[Download the DWG file by clicking here.](#)

[To Section Index](#)

Typical Mezzanine Framing Connection
 Mezzanine Beam to Column Web/Flange
 MF07/AA



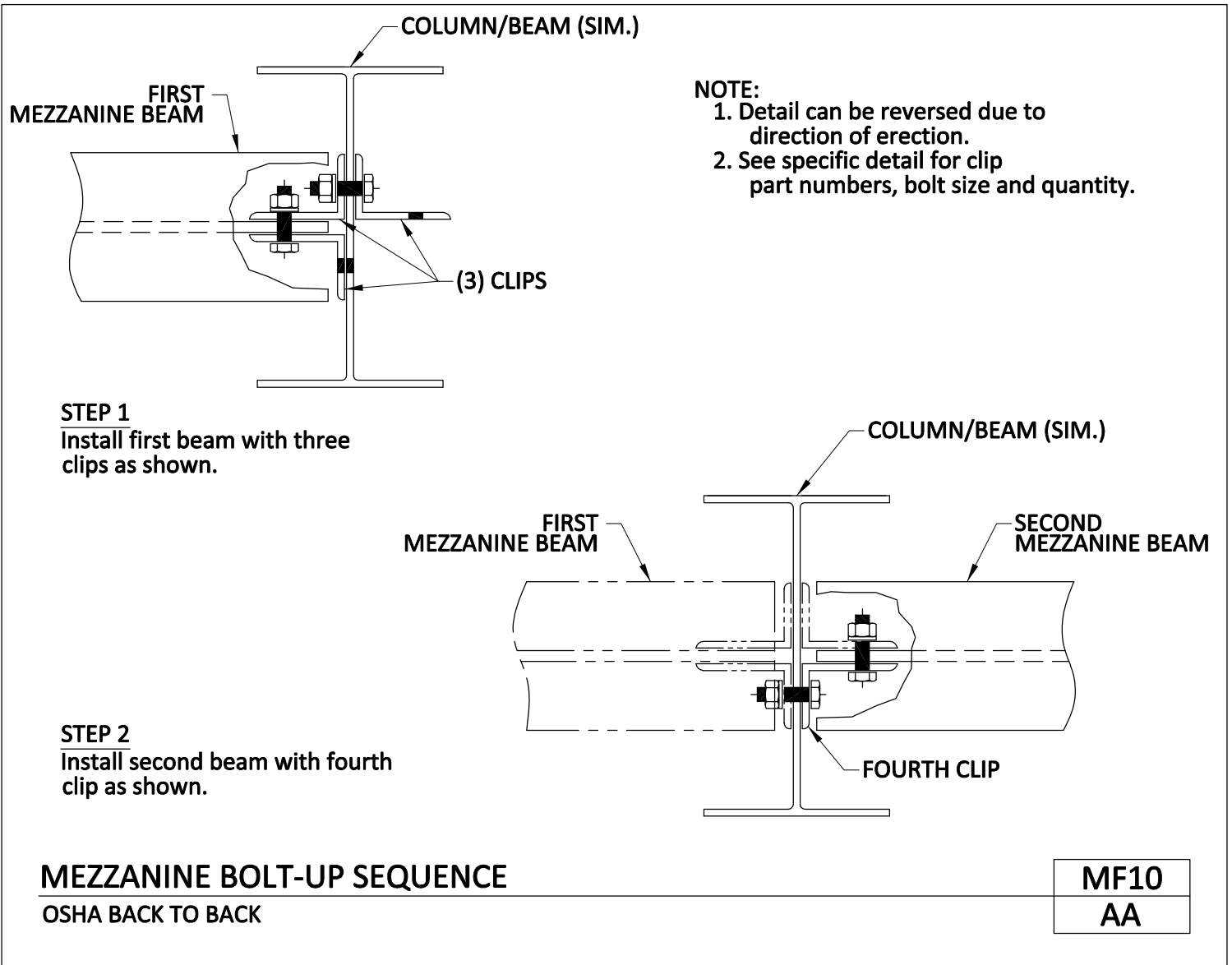
[Download the DWG file by clicking here.](#)

[To Section Index](#)

Mezzanine Bolt-Up Sequence

OSHA Back to Back

MF10/AA



[Download the DWG file by clicking here.](#)

[To Section Index](#)



**AMERICAN
BUILDINGS**

A **NUCOR** COMPANY

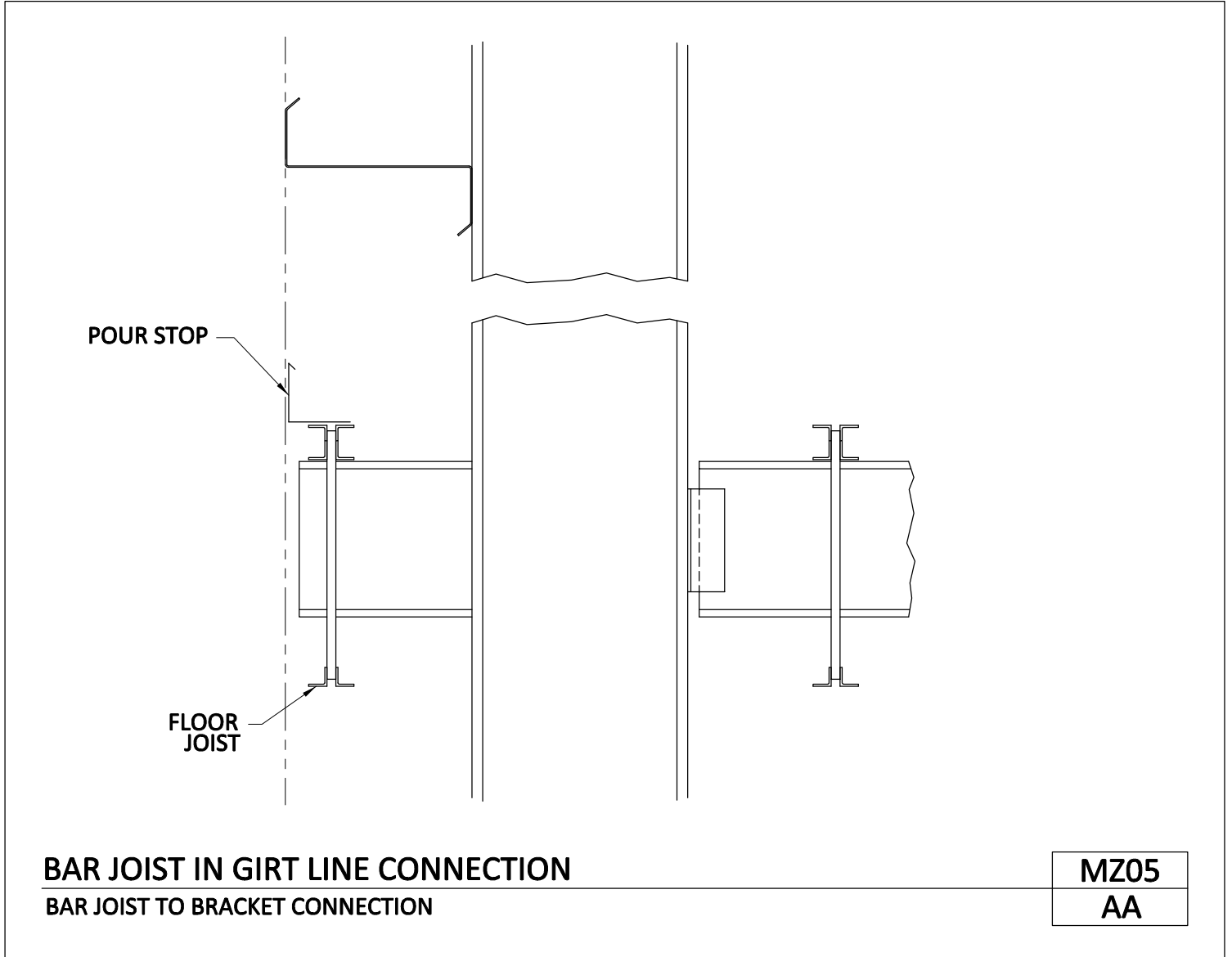
PRODUCT MANUAL

MEZZANINE FRAMING

Bar Joist in Girt Line Connection

Bar Joist to Bracket Connection

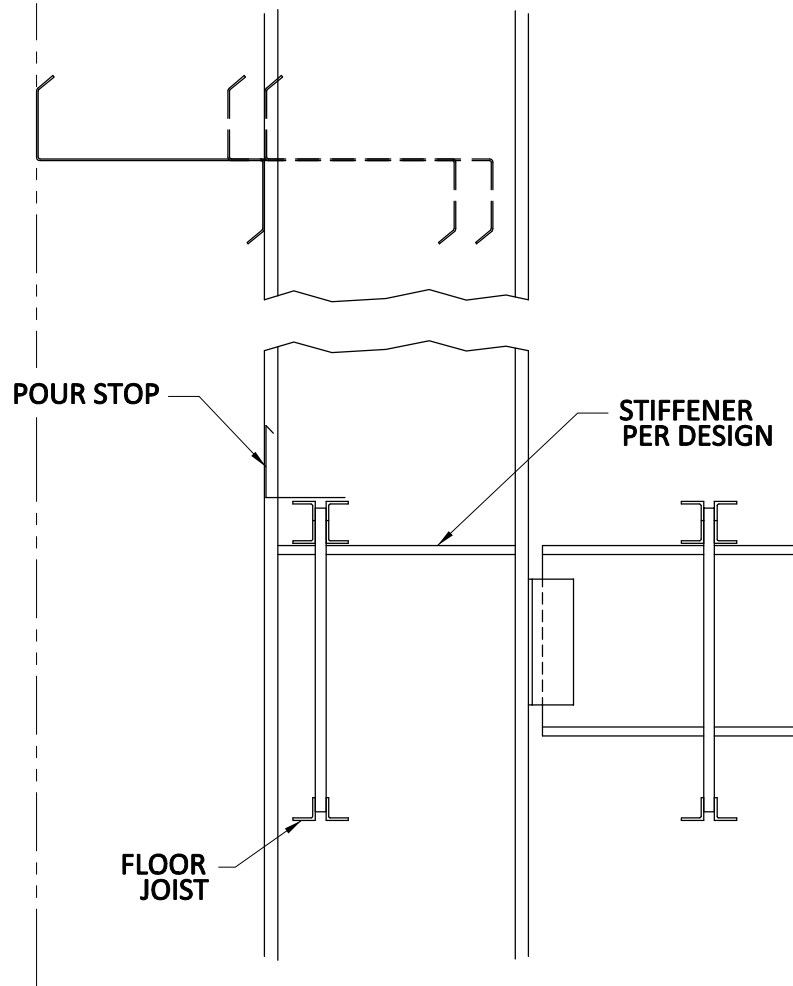
MZ05/AA



[Download the DWG file by clicking here.](#)

[To Section Index](#)

Bar Joist in Column Connection
Bar Joist to Column Connection
MZ06/AA



BAR JOIST IN COLUMN CONNECTION
BAR JOIST TO COLUMN CONNECTION

MZ06
AA

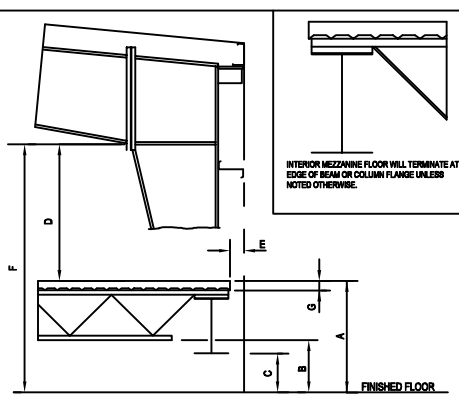
[Download the DWG file by clicking here.](#)

[To Section Index](#)

Mezzanine Specifications

MZSP/AA

Detailing Note:
Enter all applicable information from the Design and Job Specific Order Requirements.
Remove / Add information as required on a Job per Job Basis.

MEZZANINE SYSTEM SPECIFICATIONS					
DESIGN LOADS	MATERIALS PROVIDED BY ABC				
psf Live Load	Load Provisions Only				
psf Dead Load	Auxiliary Support Columns				
psf Collateral Load	Support Beams & Flange Braces				
If Req'd, Collateral Load to Applied Tr:	Joists and Bridging				
Top Chord of Joists	Edge Angle and Floor Slips				
Bottom Chord of Joists	JOIST ATTACHMENT METHOD				
FLOOR DESIGN	Welded				
Steel or Plywood Thickness	Bolted				
FLOOR MATERIAL	DECK INFORMATION				
Lightweight Concrete	Decking				
Standard Weight Concrete	Deck Type				
Plywood	DECK FINISH				
Other:	Paint/Painted				
OTHER LOADS SUPPORTED BY ABC STEEL OR ADDITIONAL NOTES	Color				
	G90 Galvanized				
	DECK ATTACHMENT METHOD				
	Welded				
	Self-Drilling Screws				
** Slab Thick'n = Top of Joist to Top of Slab					
MEZZANINE FRAMED OPENINGS					
QTY	SIZE	WGT	QTY	SIZE	WGT
DIMENSIONAL SPECIFICATIONS					
SYM	DIMENSION	DESCRIPTION			
A		FINISH FLOOR TO TOP OF MEZZANINE			
B		MINIMUM CLEARANCE UNDER JOIST			
C		MINIMUM CLEARANCE UNDER SUPPORT BEAMS			
D		MINIMUM CLEARANCE UNDER FRAME			
E		EDGE OF SLAB/DECK SETBACK FROM STEEL LINE			
F		CLEARANCE UNDER JOIST			
G		FROM TOP OF JOIST TO TOP OF SLAB			
 <p>The diagram shows a side view of a mezzanine framing system. It includes a truss structure supported by a steel beam. Dimensions A through G are labeled to indicate various clearances and heights. A note states: 'INTERIOR MEZZANINE FLOOR WILL TERMINATE AT EDGE OF BEAM OR COLUMN FLANGE UNLESS NOTED OTHERWISE.' The base is labeled 'FINISHED FLOOR'.</p>					
MEZZANINE SPECIFICATIONS		MZSP AA			

[Download the DWG file by clicking here.](#)